

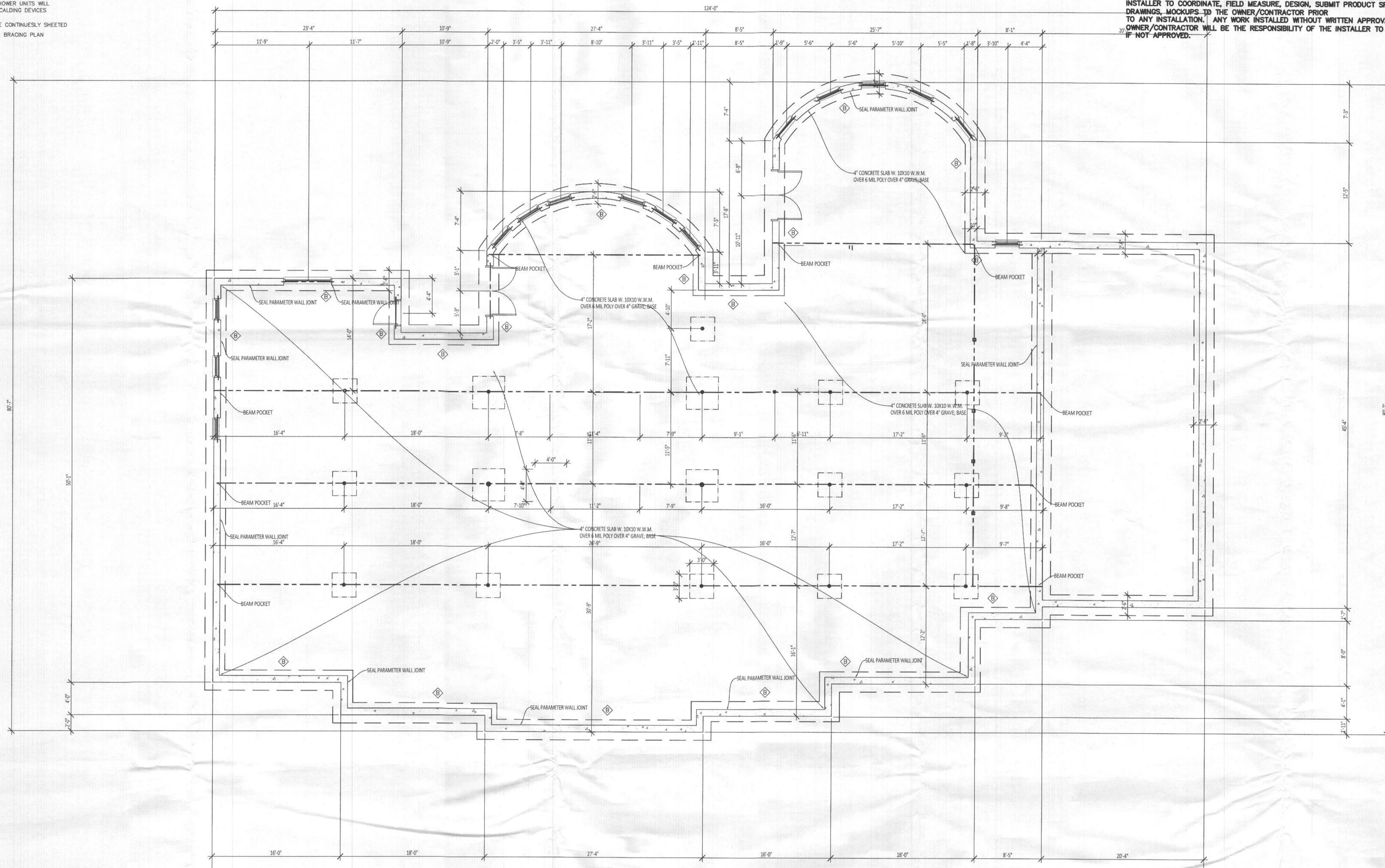


DIMENSIONS ARE SHOWN TO FACE OF STUD FRAMING ONLY

GENERAL FINISH PRODUCTS NOTES:

OWNER/CONTRACTOR/SUBCONTRACTOR/MATERIAL MAN, PLEASE NOTE THAT THESE DRAWINGS ARE SCHEMATIC ONLY. THE FINISH PRODUCT AS SHOWN ON THE PLANS ARE NOT THE FINAL PRODUCT. IT IS THE RESPONSIBILITY OF EACH SUPPLIER INSTALLER TO COORDINATE, FIELD MEASURE, DESIGN, SUBMIT PRODUCT SPECIFICATION, SHOP DRAWINGS, MOCKUPS TO THE OWNER/CONTRACTOR PRIOR TO ANY INSTALLATION. ANY WORK INSTALLED WITHOUT WRITTEN APPROVAL OF THE OWNER/CONTRACTOR WILL BE THE RESPONSIBILITY OF THE INSTALLER TO CORRECT IF NOT APPROVED.

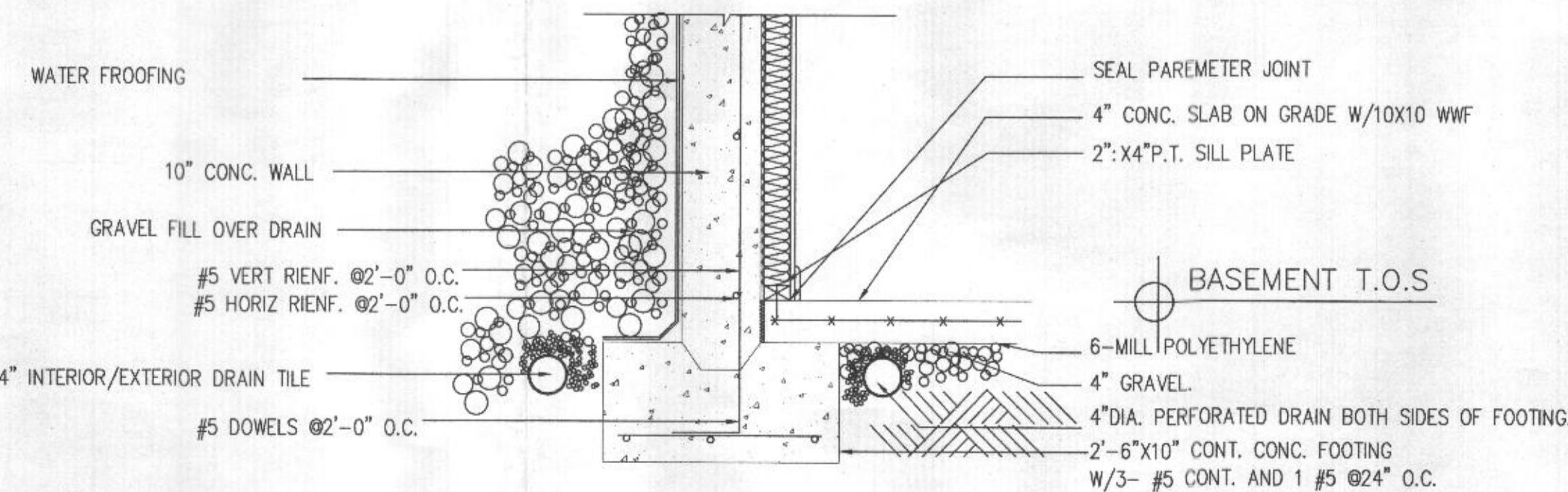
1. GARAGE DOOR TO BE CERTIFIED BY MFR. FOR 100 M.P.H.
2. ALL TUB & SHOWER UNITS WILL HAVE ANTI-SCALDING DEVICES INSTALLED.
3. HOUSE TO BE CONTINUOUSLY SHEETED
4. COMPLY WITH BRACING PLAN



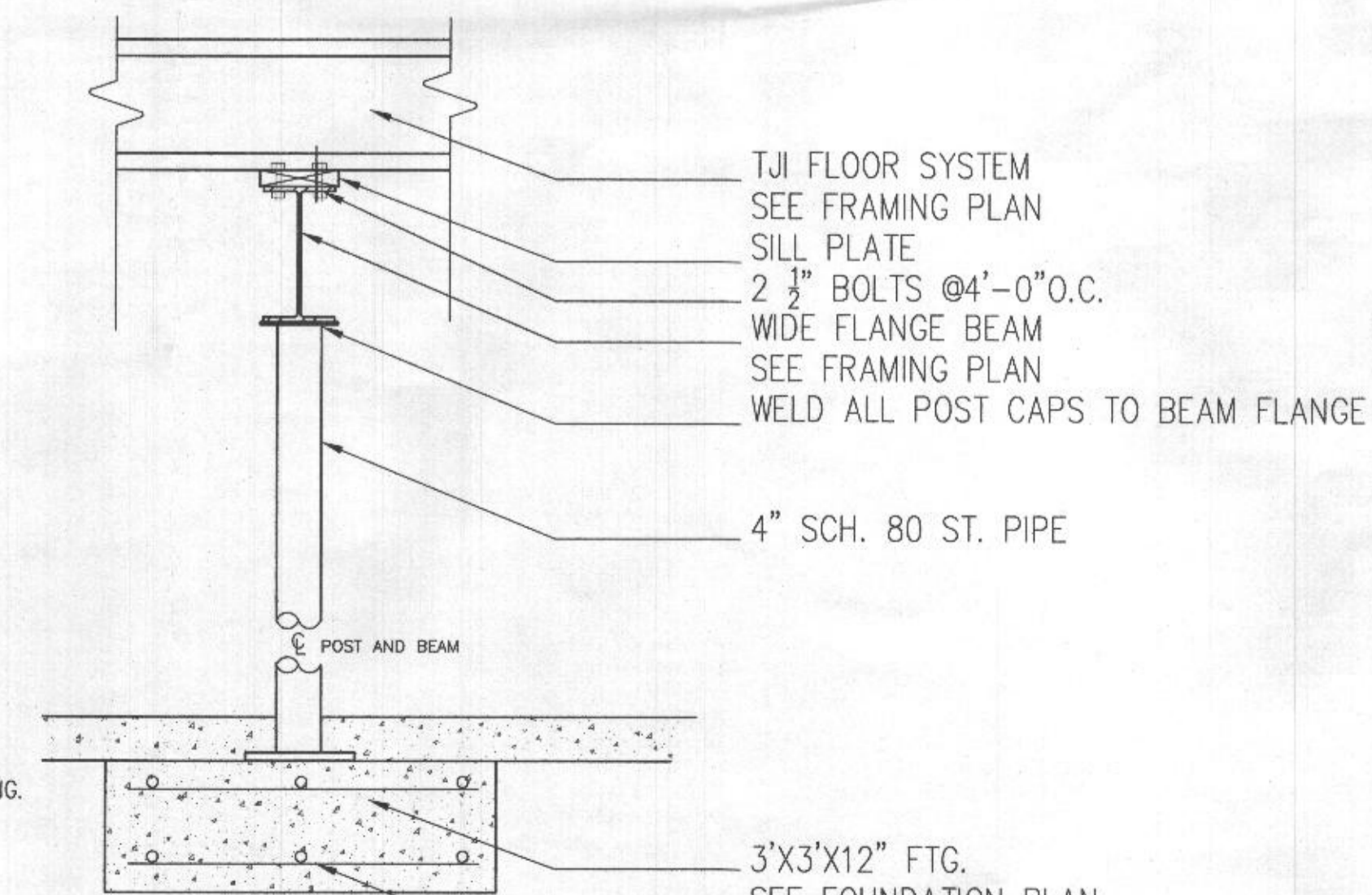
**1 FOUNDATION FLOOR PLAN**  
3/16" = 1'-0"

ALL FINISHED FLOOR WILL BE 3" HARDWOOD

- A. THE BOTTOM OF THE FOOTING MUST BEAR ON SOLID GROUND OR ON AN ENGINEERED FILL (MIN. 3,000 PSF SUBJECT TO SOIL PRESSURE TEST) AND SHALL BE 32" BELOW FINISHED GRADE (MIN.) IF A DISCREPANCY FROM PRESUMED SOIL BEARING CAPACITY EXISTS, CONTRACTOR SHALL NOT PLACE FOUNDATION WITHOUT WRITTEN INSTRUCTION FROM THE ARCH./ENGINEER.
- B. FOOTING STEPS ARE TO BE CONTINUOUS AND REINFORCED W/STEEL, MAXIMUM STEP 24", 1 TO 3 RATIO.
- C. CONCRETE SLAB TO BE STRUCTURALLY REINFORCED IF OVER EXCESSIVE FILL.



**2 TYP. CONTINUOUS FTG. DETAIL**  
SCALE: NTS



**3 TYP. COL. FTG. PAD DETAIL**  
SCALE: NTS

WALL TYPE LEGEND

- NEW 4" BRICK VENEER WALL.
- NEW 10" CONCRETE FOUNDATION WALL, V. #4 REINFORCING @ 8" O.C. HORIZ. AND VERTICAL WITH 4" BRICK LEDGE.
- NEW 12" CONCRETE FOUNDATION WALL, V. #4 REINFORCING @ 8" O.C. HORIZ. AND VERTICAL WITH BRICK LEDGE.
- NEW CMU MASONRY WALL, TYPE AND MORTAR AS NOTED ON DRAWINGS.
- EXISTING WALLS TO REMAIN.
- NEW 2X4 STUDS@16" O.C. INTERIOR WALLS ONLY.
- NEW 2X4 STUDS@16" O.C. W/ 3 1/2" BATT INSULATION AND 1/2" GYP. BOARD ON INT.
- DEMOLISH 2X4 STUDS@16" O.C.
- NEW 2X6 STUDS@16" O.C. W/ 5 1/2" BATT INSULATION W/ 1/2" GYP. PLINTHOOD ON EXT. AND 1/2" GYP. BOARD ON INT.
- NEW 2X6 STUDS@16" O.C. W/ 6 1/2" BATT INSULATION FOR BEARING WALLS SEE WALL TYP. SECTION.
- FURR WALL TO MATCH EXISTING THICKNESS.

- TJI FLOOR SYSTEM
- SEE FRAMING PLAN
- SILL PLATE
- 2 3/8" BOLTS @4'-0" O.C.
- WIDE FLANGE BEAM
- SEE FRAMING PLAN
- WELD ALL POST CAPS TO BEAM FLANGE
- 4" SCH. 80 ST. PIPE

3"X3"X12" FTG.  
SEE FOUNDATION PLAN  
2 LAYERS #5 EACHWAY  
SEE FRAMING PLAN

WRITTEN DIMENSIONS SHALL HAVE PRECEDENCE OVER SCALE DIMENSIONS. CONTRACTORS SHALL VERIFY AND BE RESPONSIBLE FOR DIMENSIONS AND CONDITIONS OF THE JOB AND HOME DESIGN SERVICES, INC. MUST BE NOTIFIED IN WRITING OF ANY VARIATION FROM THE DIMENSIONS, CONDITIONS AND SPECIFICATIONS APPEARING ON THESE PLANS.

SHEET TITLE  
FOUNDATION PLAN  
PROJECT INFORMATION

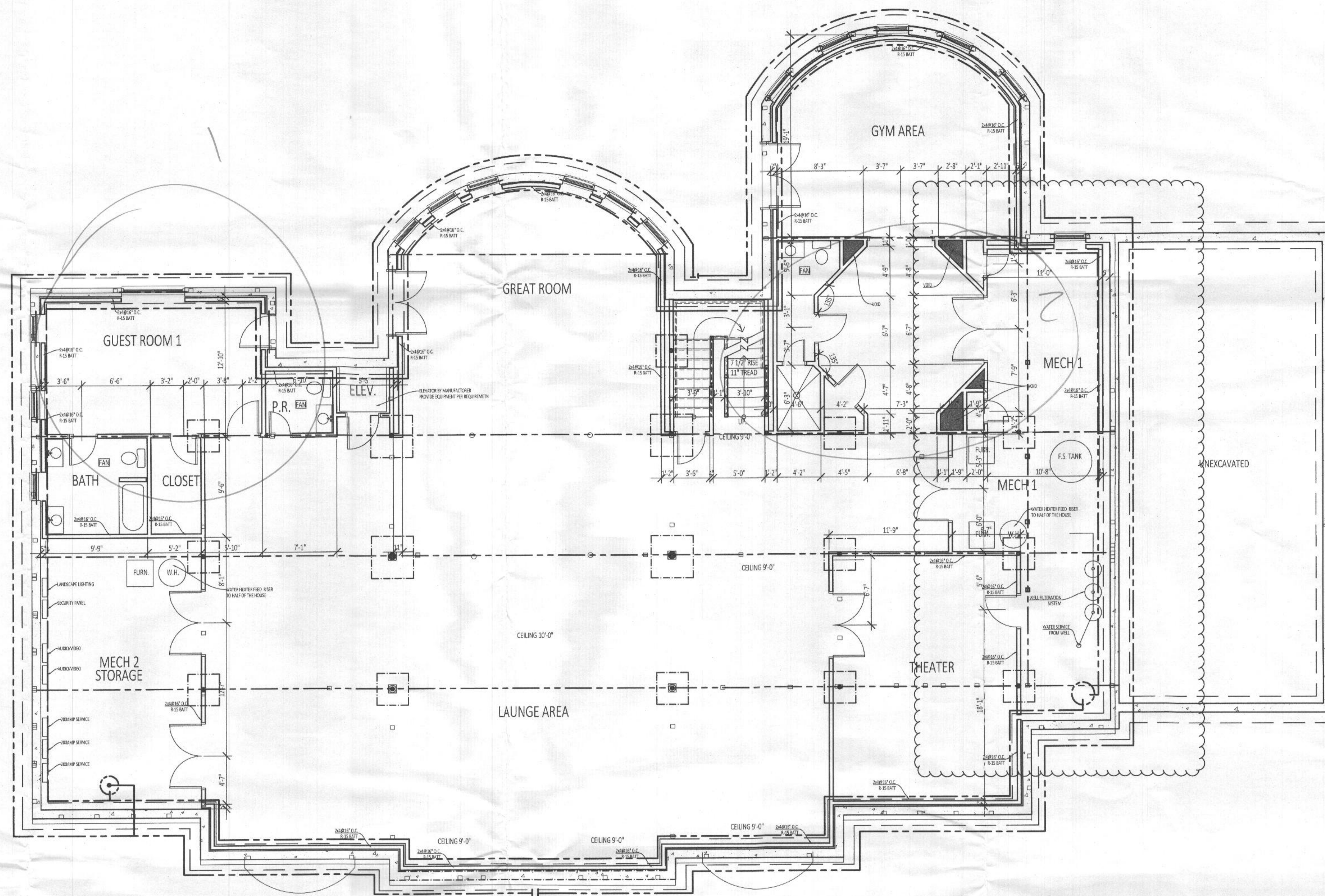
DATE DRAWN

REVISIONS:

SHEET NUMBER  
**A003**

**AMINCO SERVICES**  
ARCHITECTS, ENGINEERS, ESTIMATORS, INSPECTORS  
207 MARTINS LANE ROCKVILLE, MD. 20850  
(301) 674-3766 / Fax (240) 453-9972  
E-MAIL: RAMIN26@AOL.COM

AMINCO SERVICES hereby reserves its common law copyright and other copyrights in these plans, ideas, and designs. These ideas, designs and plans are not to be copied or changed in any manner or form whatsoever, nor are they to be assigned to any third party without first obtaining the express written permission from AMINCO SERVICES.



LIVING SPACE: 5600 SQFT

BASEMENT FLOOR LAYOUT

**Revised**  
12/18/2019 8:01:40 PM

COMMENT AREA

---

**AMINCO SERVICES**  
ARCHITECTS, ENGINEERS, ESTIMATORS, INSPECTORS  
207 MARTINS LANE ROCKVILLE, MD, 20850  
(301) 674-3766 / FAX (301) 459-9972  
E-MAIL: RAMIN26@AOL.COM

---

Professional Certification:  
I hereby certify that these documents were prepared or approved by me, and that I am a duly licensed professional engineer or architect under the laws of the State of Maryland, License No. 44370.

---

<b>SHEET TITLE</b>	<b>COVER SHEET</b>
<b>PROJECT INFORMATION</b>	
DATE	DRAWN
<b>REVISIONS:</b>	
<i>2 Bedrooms</i>	
Revised 08/19/2019 8:59:15 PM	
<b>SHEET NUMBER</b>	
<b>A004</b>	

AMINCO SERVICES hereby reserves its common law copyright and other copyright in these plans, notes, and designs. These plans, notes, and designs shall remain the property of AMINCO SERVICES.

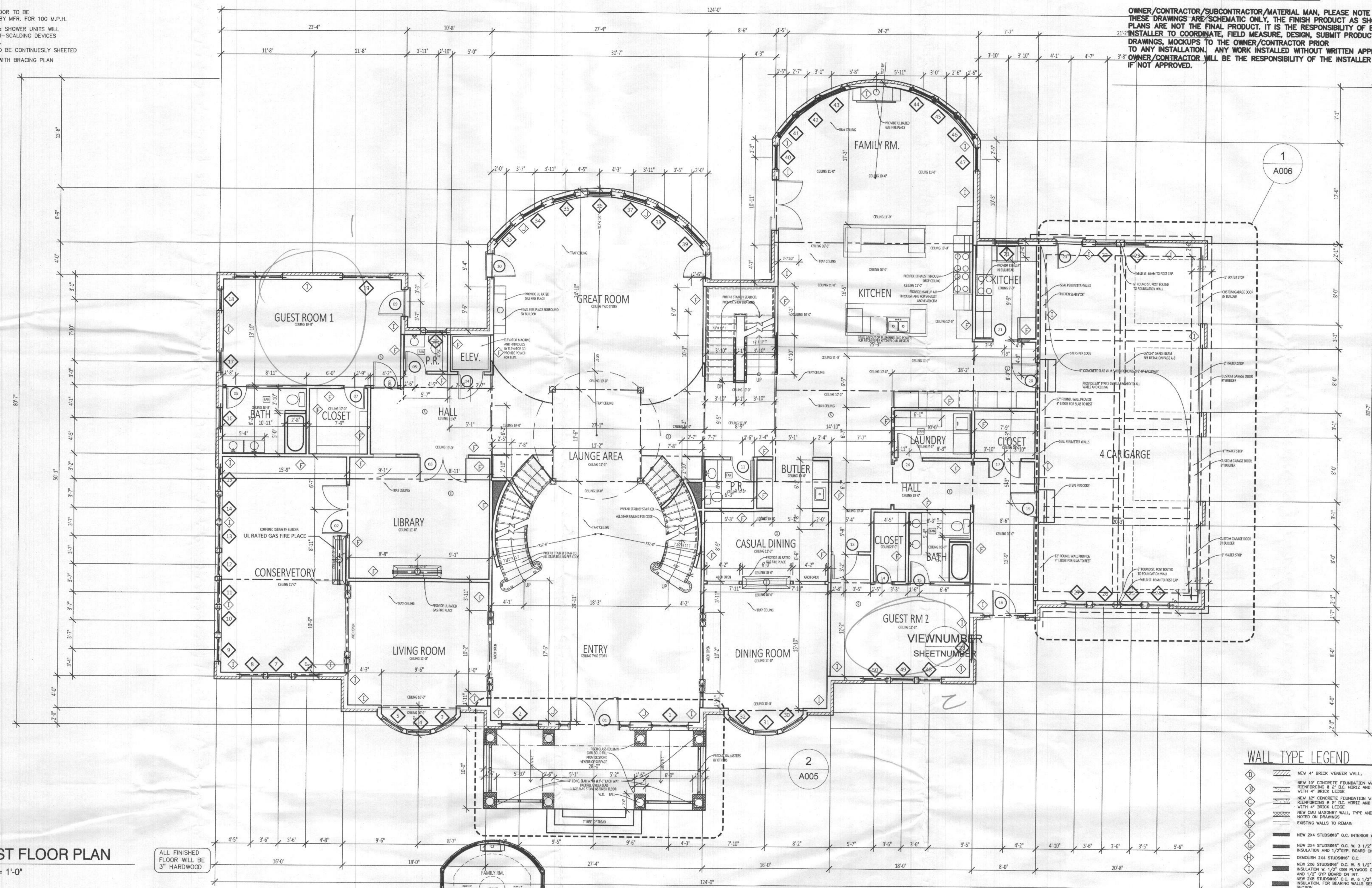
DIMENSIONS ARE SHOWN TO FACE OF STUD FRAMING ONLY

GENERAL FINISH PRODUCTS NOTES:

1. GARAGE DOOR TO BE CERTIFIED BY MFR. FOR 100 M.P.H.
2. ALL TUB & SHOWER UNITS WILL HAVE ANTI-SCALDING DEVICES INSTALLED.
3. HOUSE TO BE CONTINUOUSLY SHEETED
4. COMPLY WITH BRACING PLAN

OWNER/CONTRACTOR/SUBCONTRACTOR/MATERIAL MAN, PLEASE NOTE THAT THESE DRAWINGS ARE SCHEMATIC ONLY. THE FINISH PRODUCT AS SHOWN ON THE PLANS ARE NOT THE FINAL PRODUCT. IT IS THE RESPONSIBILITY OF EACH SUPPLIER/INSTALLER TO COORDINATE, FIELD MEASURE, DESIGN, SUBMIT PRODUCT SPECIFICATION, SHOP DRAWINGS, MOCKUPS TO THE OWNER/CONTRACTOR PRIOR TO ANY INSTALLATION. ANY WORK INSTALLED WITHOUT WRITTEN APPROVAL OF THE OWNER/CONTRACTOR WILL BE THE RESPONSIBILITY OF THE INSTALLER TO CORRECT IF NOT APPROVED.

COMMENT AREA



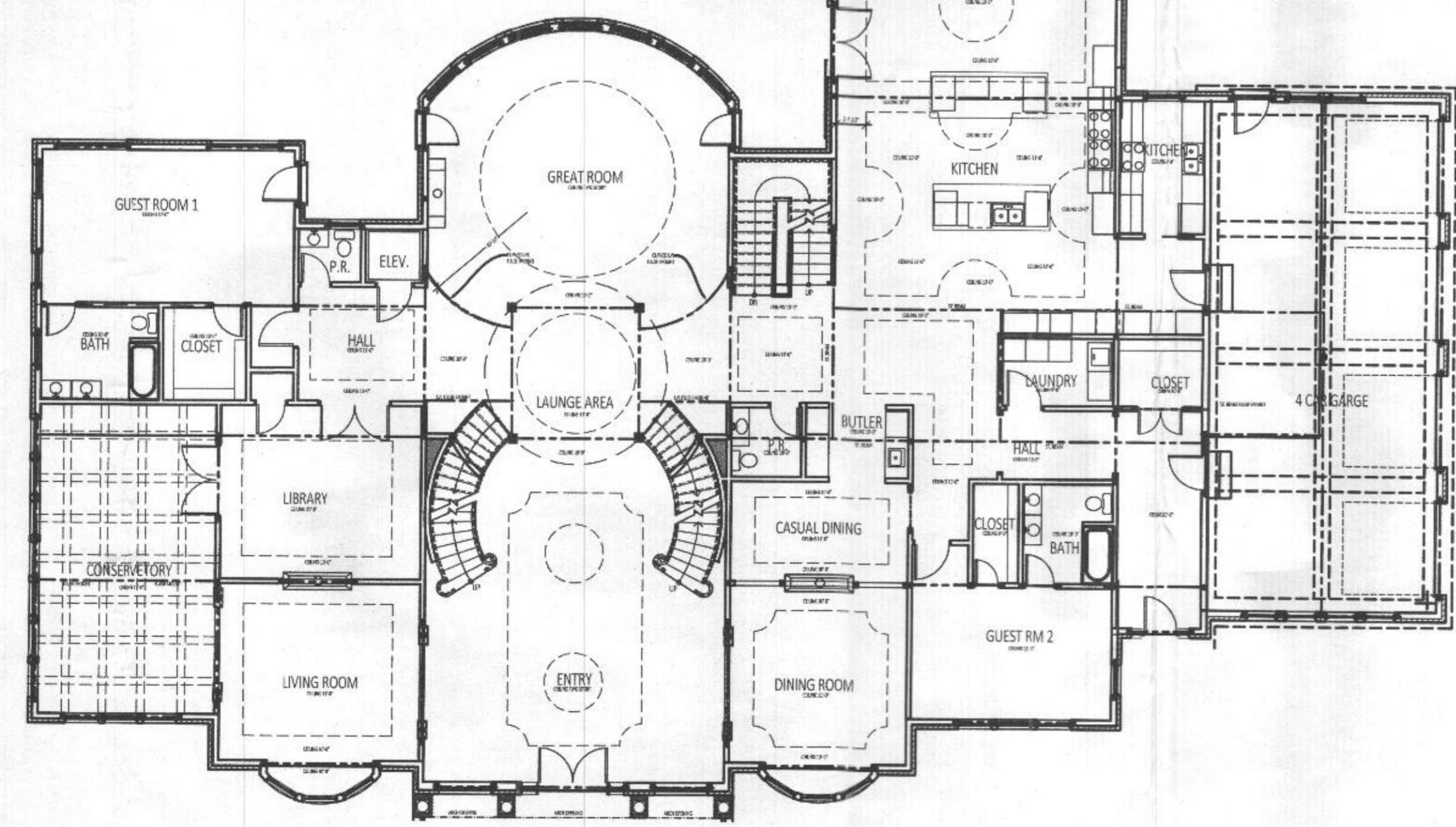
**1** FIRST FLOOR PLAN  
3/32" = 1'-0"

ALL FINISHED FLOOR WILL BE 3" HARDWOOD

**WALL TYPE LEGEND**

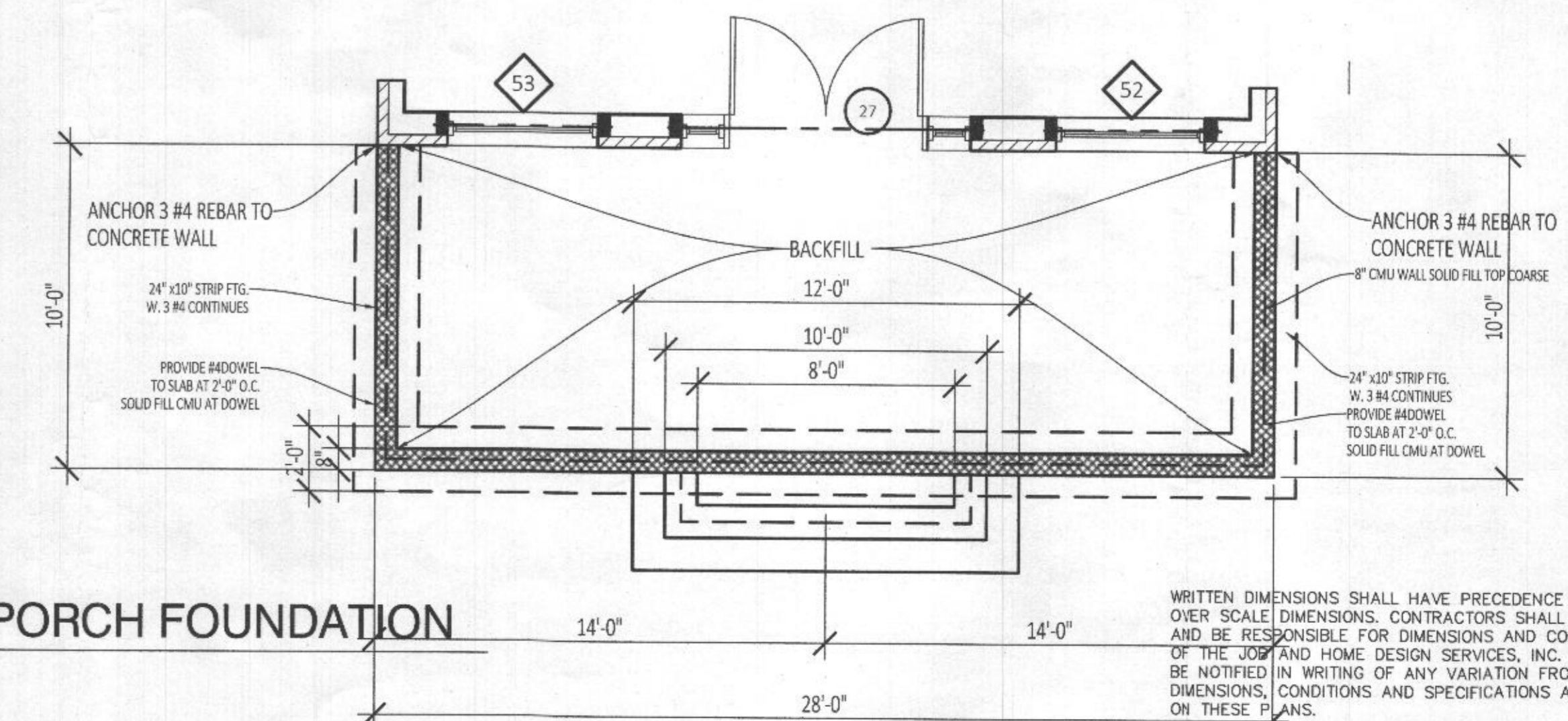
	NEW 4" BRICK VENEER WALL
	NEW 10" CONCRETE FOUNDATION WALL, W. #4 REINFORCING @ 12" O.C. HORIZ. AND VERTICAL WITH 4" BRICK LEISSE
	NEW 16" CONCRETE FOUNDATION WALL, W. #4 REINFORCING @ 12" O.C. HORIZ. AND VERTICAL WITH 4" BRICK LEISSE
	NEW CMU MASONRY WALL TYPE AND WIDTH AS NOTED ON DRAWINGS
	EXISTING WALLS TO REMAIN
	NEW 2x4 STUDS @ 16" O.C. INTERIOR WALLS ONLY
	NEW 2x4 STUDS @ 16" O.C. W. 3 1/2" BATT INSULATION AND 1/2" GYP. BOARD ON INT.
	DEMOLISH 2x4 STUDS @ 16" O.C.
	NEW 2x6 STUDS @ 16" O.C. W. 5 1/2" BATT INSULATION W. 1/2" OSB PLYWOOD ON EXT. AND 1/2" COP. BOARD ON INT.
	NEW 2x8 STUDS @ 16" O.C. W. 8 1/2" BATT INSULATION FOR BEARING WALLS SEE WALL TYP. SECTION
	FLOOR WALL TO MATCH EXISTING THICKNESS

SEE FRAMING PLAN FOR JOIST AND BEAM/POST SIZE/LOCATIONS



**3** FIRST FL. CEILING PLAN  
3/32" = 1'-0"

**2** FRONT PORCH FOUNDATION  
1/4" = 1'-0"



WRITTEN DIMENSIONS SHALL HAVE PRECEDENCE OVER SCALE DIMENSIONS. CONTRACTORS SHALL VERIFY AND BE RESPONSIBLE FOR DIMENSIONS AND CONDITIONS OF THE JOB AND HOME DESIGN SERVICES, INC. MUST BE NOTIFIED IN WRITING OF ANY VARIATION FROM THE DIMENSIONS, CONDITIONS AND SPECIFICATIONS APPEARING ON THESE PLANS.

AMINCO SERVICES hereby reserves its common law copyright and other copyrights in these plans, notes, and designs. These notes, designs and plans are not to be copied or changed in any manner or form whatsoever, nor are they to be assigned to any third party without first obtaining the express written permission from AMINCO SERVICES.

**AMINCO SERVICES**  
ARCHITECTS ENGINEERS ESTIMATORS INSPECTORS  
207 MARTINS LANE ROCKVILLE, MD. 20850  
(301) 674-3766 / fax (240) 453-9972  
E-MAIL: RAMIN28@AOL.COM

**SHEET TITLE**  
FIRST FLOOR PLAN  
**PROJECT INFORMATION**

DATE \_\_\_\_\_ DRAWN \_\_\_\_\_

**REVISIONS:**

NO.	DESCRIPTION

**SHEET NUMBER**  
**A005**

*2 Bedrooms*



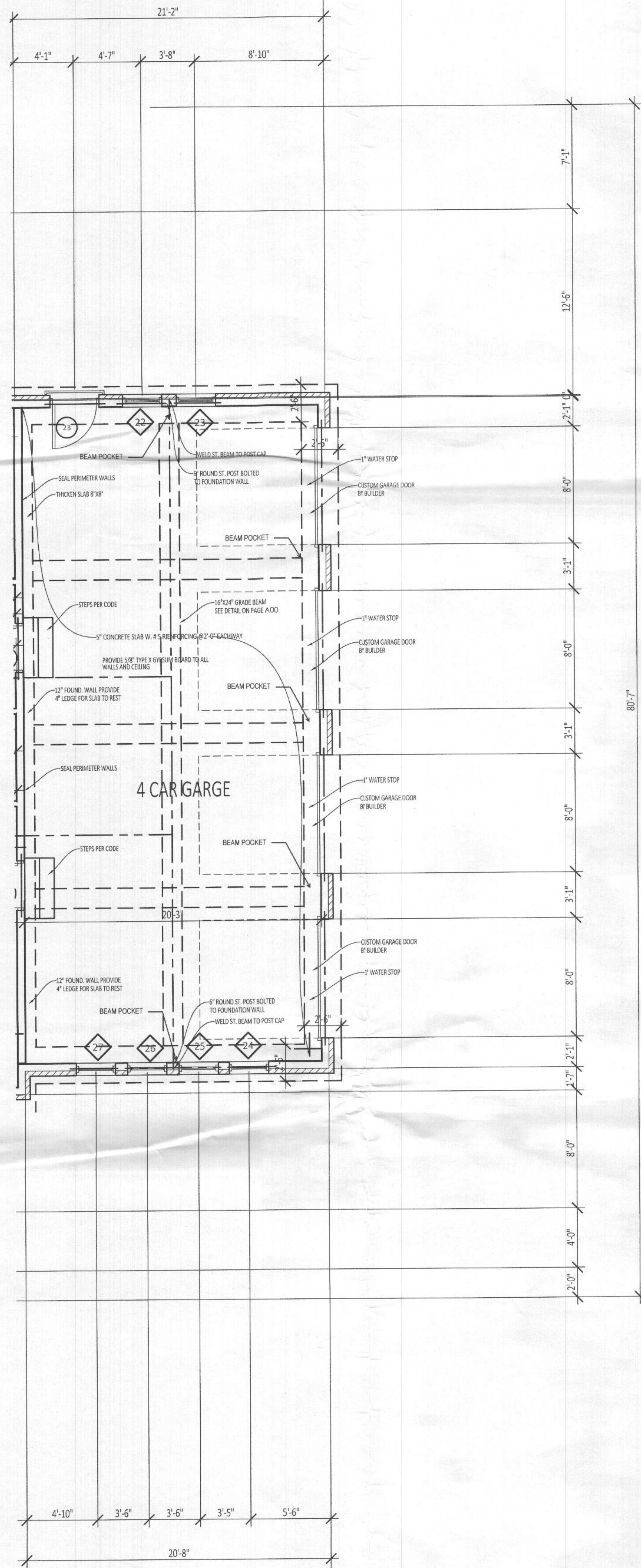
IT IS HIGHLY RECOMMENDED TO VERIFY PLANS AND ELEVATIONS FOR TOTAL WINDOW QUALITY

- GARAGE DOOR TO BE CERTIFIED BY MFR. FOR 100 M.P.H.
- ALL TUB & SHOWER UNITS WILL HAVE ANTI-SCALDING DEVICES INSTALLED.
- HOUSE TO BE CONTINUOUSLY SHEETED
- COMPLY WITH BRACING PLAN

GENERAL FINISH PRODUCTS NOTES:

OWNER/CONTRACTOR/SUBCONTRACTOR/MATERIAL MAN, PLEASE NOTE THAT THESE DRAWINGS ARE SCHEMATIC ONLY, THE FINISH PRODUCT AS SHOWN ON THE PLANS ARE NOT THE FINAL PRODUCT. IT IS THE RESPONSIBILITY OF EACH SUPPLIER INSTALLER TO COORDINATE, FIELD MEASURE, DESIGN, SUBMIT PRODUCT SPECIFICATION, SHOP DRAWINGS, MOCKUPS TO THE OWNER/CONTRACTOR PRIOR TO ANY INSTALLATION. ANY WORK INSTALLED WITHOUT WRITTEN APPROVAL OF THE OWNER/CONTRACTOR WILL BE THE RESPONSIBILITY OF THE INSTALLER TO CORRECT IF NOT APPROVED.

COMMENT AREA



FIRST FLOOR DOOR SCHEDULE

MARK	DOOR			FRAME			FIRE RATING LABEL	NOTES
	SIZE			DETAIL				
	WD	HGT	THK	HEAD	JAMB	SILL		
1	6'-0"	9'-10"	1 3/4"	---	---	---	---	---
2	6'-0"	8'-0"	1 3/4"	---	---	---	---	---
3	6'-0"	8'-0"	1 3/4"	---	---	---	---	---
4	3'-0"	8'-0"	2"	---	---	---	---	---
5	2'-8"	8'-0"	2"	---	---	---	---	---
6	3'-0"	8'-0"	2"	---	---	---	---	---
7	2'-8"	8'-0"	2"	---	---	---	---	---
8	2'-8"	8'-0"	2"	---	---	---	---	---
9	3'-0"	8'-0"	2"	---	---	---	---	---
10	2'-8"	8'-0"	1 3/4"	---	---	---	---	---
11	2'-8"	8'-0"	2"	---	---	---	---	---
13	3'-0"	8'-0"	2"	---	---	---	---	---
14	2'-8"	8'-0"	2"	---	---	---	---	---
15	2'-8"	8'-0"	2"	---	---	---	---	---
17	4'-0"	8'-0"	1 3/4"	---	---	---	---	---
18	3'-0"	8'-0"	2"	---	---	---	---	---
19	3'-0"	8'-0"	2"	---	---	---	---	---
20	3'-0"	8'-0"	2"	---	---	---	---	---
23	3'-0"	8'-0"	2"	---	---	---	---	---
24	3'-0"	8'-0"	2"	---	---	---	---	---
26	2'-8"	8'-0"	2"	---	---	---	---	---

FIRST FLOOR WINDOW SCHEDULE

MARK	SIZE		TYPE	MATERIAL	NOTES
	Width	HEIGHT			
1	4'-8"	7'-0"	---	---	---
2	4'-8"	7'-0"	---	---	---
3	3'-0"	8'-0"	---	---	---
4	3'-0"	8'-0"	---	---	---
5	3'-0"	8'-0"	---	---	---
6	3'-0"	8'-0"	---	---	---
7	3'-0"	8'-0"	---	---	---
8	3'-0"	8'-0"	---	---	---
9	3'-0"	8'-0"	---	---	---
10	3'-0"	8'-0"	---	---	---
11	3'-0"	8'-0"	---	---	---
12	3'-0"	8'-0"	---	---	---
13	3'-0"	8'-0"	---	---	---
14	3'-0"	8'-0"	---	---	---
15	3'-0"	8'-0"	---	---	---
16	2'-8"	5'-0"	---	---	---
17	2'-8"	5'-0"	---	---	---
18	2'-8"	5'-0"	---	---	---
19	6'-0"	7'-0"	---	---	---
20	2'-8"	5'-0"	---	---	---
21	3'-0"	8'-0"	---	---	---
22	2'-8"	5'-0"	---	---	---
23	2'-8"	5'-0"	---	---	---
24	2'-8"	5'-0"	---	---	---
25	2'-8"	5'-0"	---	---	---
26	2'-8"	5'-0"	---	---	---
27	2'-8"	5'-0"	---	---	---
28	2'-8"	5'-0"	---	---	---
30	3'-0"	6'-0"	---	---	---
31	3'-0"	6'-0"	---	---	---
32	3'-0"	6'-0"	---	---	---
33	3'-0"	7'-0"	---	---	---
34	3'-0"	7'-0"	---	---	---
35	3'-0"	7'-0"	---	---	---
36	3'-0"	7'-0"	---	---	---
37	3'-0"	7'-0"	---	---	---
38	3'-0"	7'-0"	---	---	---
39	3'-0"	7'-0"	---	---	---
40	3'-0"	7'-0"	---	---	---
41	3'-0"	7'-0"	---	---	---
42	3'-0"	7'-0"	---	---	---
43	3'-0"	7'-0"	---	---	---
44	3'-0"	7'-0"	---	---	---
45	3'-0"	7'-0"	---	---	---
46	3'-0"	7'-0"	---	---	---
47	3'-0"	7'-0"	---	---	---
48	3'-0"	6'-0"	---	---	---
49	3'-0"	6'-0"	---	---	---
50	3'-0"	6'-0"	---	---	---

SECOND FLOOR DOOR SCHEDULE

MARK	DOOR			LOUVER			FRAME			FIRE RATING LABEL	HARDWARE		NOTES	
	SIZE			MATERIAL			DETAIL				SET NO	KEYSIDE RM NO		
	WD	HGT	THK	MATL	GLAZING	THK	WD	HGT	MATL					EL
25	4'-0"	8'-0"	1 3/4"	---	---	---	---	---	---	---	---	---	---	---
26	4'-0"	8'-0"	1 3/4"	---	---	---	---	---	---	---	---	---	---	---
27	4'-0"	8'-0"	1 3/4"	---	---	---	---	---	---	---	---	---	---	---
28	4'-0"	8'-0"	1 3/4"	---	---	---	---	---	---	---	---	---	---	---
29	4'-0"	8'-0"	1 3/4"	---	---	---	---	---	---	---	---	---	---	---
30	4'-0"	8'-0"	1 3/4"	---	---	---	---	---	---	---	---	---	---	---
31	4'-0"	8'-0"	1 3/4"	---	---	---	---	---	---	---	---	---	---	---
32	4'-0"	8'-0"	1 3/4"	---	---	---	---	---	---	---	---	---	---	---
33	4'-0"	8'-0"	1 3/4"	---	---	---	---	---	---	---	---	---	---	---
34	4'-0"	8'-0"	1 3/4"	---	---	---	---	---	---	---	---	---	---	---
35	4'-0"	8'-0"	1 3/4"	---	---	---	---	---	---	---	---	---	---	---
36	4'-0"	8'-0"	1 3/4"	---	---	---	---	---	---	---	---	---	---	---
37	4'-0"	8'-0"	1 3/4"	---	---	---	---	---	---	---	---	---	---	---
38	4'-0"	8'-0"	1 3/4"	---	---	---	---	---	---	---	---	---	---	---
39	4'-0"	8'-0"	1 3/4"	---	---	---	---	---	---	---	---	---	---	---
40	4'-0"	8'-0"	1 3/4"	---	---	---	---	---	---	---	---	---	---	---
41	4'-0"	8'-0"	1 3/4"	---	---	---	---	---	---	---	---	---	---	---
42	4'-0"	8'-0"	1 3/4"	---	---	---	---	---	---	---	---	---	---	---
43	4'-0"	8'-0"	1 3/4"	---	---	---	---	---	---	---	---	---	---	---
44	4'-0"	8'-0"	1 3/4"	---	---	---	---	---	---	---	---	---	---	---
45	4'-0"	8'-0"	1 3/4"	---	---	---	---	---	---	---	---	---	---	---
46	4'-0"	8'-0"	1 3/4"	---	---	---	---	---	---	---	---	---	---	---
47	4'-0"	8'-0"	1 3/4"	---	---	---	---	---	---	---	---	---	---	---
48	4'-0"	8'-0"	1 3/4"	---	---	---	---	---	---	---	---	---	---	---
49	4'-0"	8'-0"	1 3/4"	---	---	---	---	---	---	---	---	---	---	---
50	4'-0"	8'-0"	1 3/4"	---	---	---	---	---	---	---	---	---	---	---

SECOND FLOOR WINDOW SCHEDULE

MARK	SIZE		TYPE	MATERIAL	NOTES
	Width	HEIGHT			
51	9'-0"	7'-0"	---	---	---
52	4'-0"	8'-0"	---	---	---
53	6'-0"	6'-0"	---	---	---
54	3'-0"	6'-0"	---	---	2 OF EACH
55	3'-0"	6'-0"	---	---	2 OF EACH
56	3'-0"	6'-0"	---	---	2 OF EACH
57	3'-0"	6'-0"	---	---	---
58	3'-0"	6'-0"	---	---	---
59	3'-0"	6'-0"	---	---	---
60	3'-0"	5'-0"	---	---	---
61	3'-0"	5'-0"	---	---	---
62	2'-8"	6'-0"	---	---	---
63	2'-8"	6'-0"	---	---	---
64	3'-0"	6'-0"	---	---	---
65	3'-0"	6'-0"	---	---	---
66	3'-0"	6'-0"	---	---	---
67	3'-0"	6'-0"	---	---	---
68	3'-0"	6'-0"	---	---	---
69	3'-0"	6'-0"	---	---	---
70	3'-0"	6'-0"	---	---	---
71	3'-0"	6'-0"	---	---	---
72	3'-0"	6'-0"	---	---	---
73	3'-0"	6'-0"	---	---	---
74	3'-0"	6'-0"	---	---	---
75	3'-0"	6'-0"	---	---	---
76	3'-0"	6'-0"	---	---	---
77	3'-0"	6'-0"	---	---	---
78	3'-0"	6'-0"	---	---	---
79	3'-0"	6'-0"	---	---	---
80	3'-0"	6'-0"	---	---	---
81	3'-0"	6'-0"	---	---	---
82	3'-0"	6'-0"	---	---	---
83	2'-8"	5'-0"	---	---	---
84	2'-8"	5'-0"	---	---	---
86	3'-0"	5'-0"	---	---	---
87	2'-0"	5'-0"	---	---	---
88	3'-0"	5'-0"	---	---	---
89	6'-0"	6'-0"	---	---	---
90	6'-0"	6'-0"	---	---	---
91	4'-8"	6'-0"	---	---	---
?	?	?	---	---	?

BASEMENT DOOR SCHEDULE

MARK	DOOR			LOUVER			FRAME			FIRE RATING LABEL	HARDWARE		NOTES	
	SIZE			MATERIAL			DETAIL				SET NO	KEYSIDE RM NO		
	WD	HGT	THK	MATL	GLAZING	THK	WD	HGT	MATL					EL
84	4'-0"	8'-0"	1 3/4"	---	---	---	---	---	---	---	---	---	---	---
85	4'-0"	8'-0"	1 3/4"	---	---	---	---	---	---	---	---	---	---	---
86	4'-0"	8'-0"	1 3/4"	---	---	---	---	---	---	---	---	---	---	---
87	4'-0"	8'-0"	1 3/4"	---	---	---	---	---	---	---	---	---	---	---
88	4'-0"	8'-0"	1 3/4"	---	---	---	---	---	---	---	---	---	---	---
89	4'-0"	8'-0"	1 3/4"	---	---	---	---	---	---	---	---	---	---	---
90	4'-0"	8'-0"	1 3/4"	---	---	---	---	---	---	---	---	---	---	---
91	4'-0"	8'-0"	1 3/4"	---	---	---	---	---	---	---	---	---	---	---
92	4'-0"	8'-0"	1 3/4"	---	---	---	---	---	---	---	---	---	---	---
93	4'-0"	8'-0"	1 3/4"	---	---	---	---	---	---	---	---	---	---	---
94	4'-0"	8'-0"	1 3/4"	---	---	---	---	---	---	---	---	---	---	---
95	4'-0"	8'-0"	1 3/4"	---	---	---	---	---	---	---	---	---	---	---
96	4'-0"	8'-0"	1 3/4"	---	---	---	---	---	---	---	---	---	---	---
97	4'-0"	8'-0"	1 3/4"	---	---	---	---	---	---	---	---	---	---	---
98	4'-0"	8'-0"	1 3/4"	---	---	---	---	---	---	---	---	---	---	---
99	4'-0"	8'-0"	1 3/4"	---	---	---	---	---	---	---	---	---	---	---
100	4'-0"	8'-0"	1 3/4"	---	---	---	---	---	---	---	---	---	---	---
101	4'-0"	8'-0"	1 3/4"	---	---	---	---	---	---	---	---	---	---	---
102	4'-0"	8'-0"	1 3/4"	---	---	---	---	---	---	---	---	---	---	---
103	4'-0"	8'-0"	1 3/4"	---	---	---	---	---	---	---	---	---	---	---
104	4'-0"	8'-0"	1 3/4"	---	---	---	---	---	---	---	---	---	---	---
105	4'-0"	8'-0"	1 3/4"	---	---	---	---	---	---	---	---	---	---	---
106	4'-0"	8'-0"	1 3/4"	---	---	---	---	---	---	---	---	---	---	---
107	4'-0"	8'-0"	1 3/4"	---	---	---	---	---	---	---	---	---	---	---

BASEMENT WINDOW SCHEDULE

MARK	SIZE		TYPE	MATERIAL	NOTES
	Width	HEIGHT			
92	2'-8"	6'-0"	---	---	---
93	6'-0"	6'-0"	---	---	---
94	2'-8"	6'-0"	---	---	---
95	2'-8"	6'-0"	---	---	---
96	3'-0"	6'-0"	---	---	---
97	3'-0"	6'-0"	---	---	---
98	3'-0"	6'-0"	---	---	---
99	3'-0"	6'-0"	---	---	---
100	3'-0"	6'-0"	---	---	---
101	3'-0"	6'-0"	---	---	---
102	3'-0"	6'-0"	---	---	---
103	3'-0"	6'-0"	---	---	---
104	3'-0"	6'-0"	---	---	---
105	3'-0"	6'-0"	---	---	---