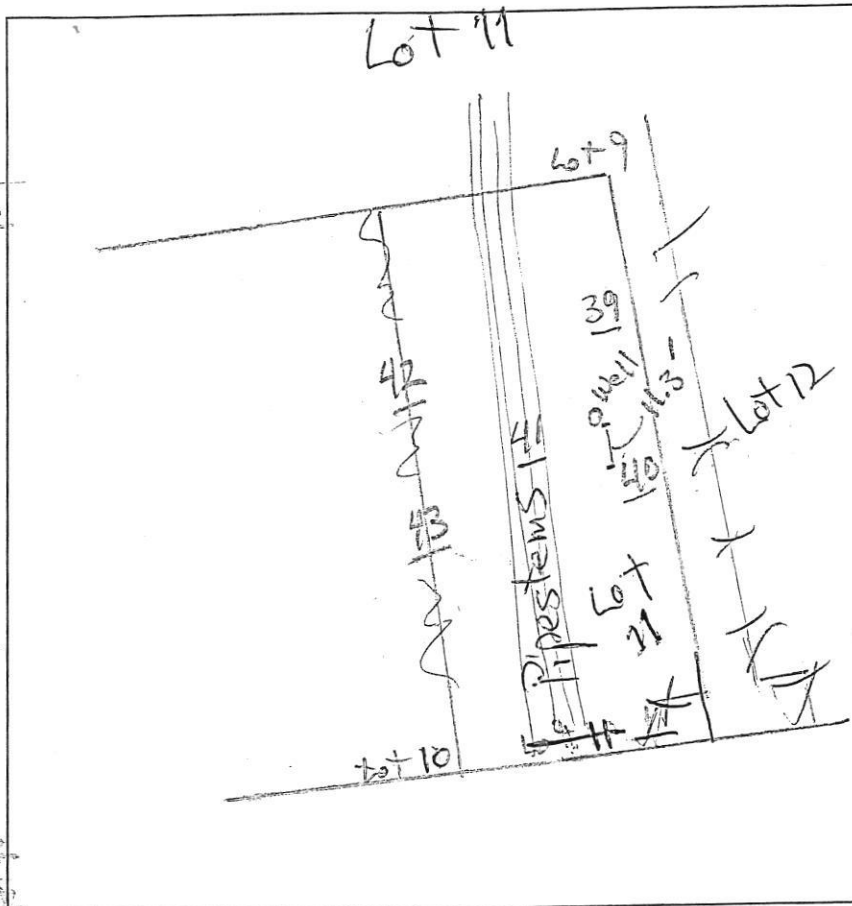


A/P



(41)
 dk brn fsl
 2' sg
 1.5' brn fsl, 2' sbsk
 to 2msbk
 brn fsl, 0m
 2.5' few mica
 5' lb. brn fsl
 many mica
 pale brn
 pale red
 chls, many
 13' mica

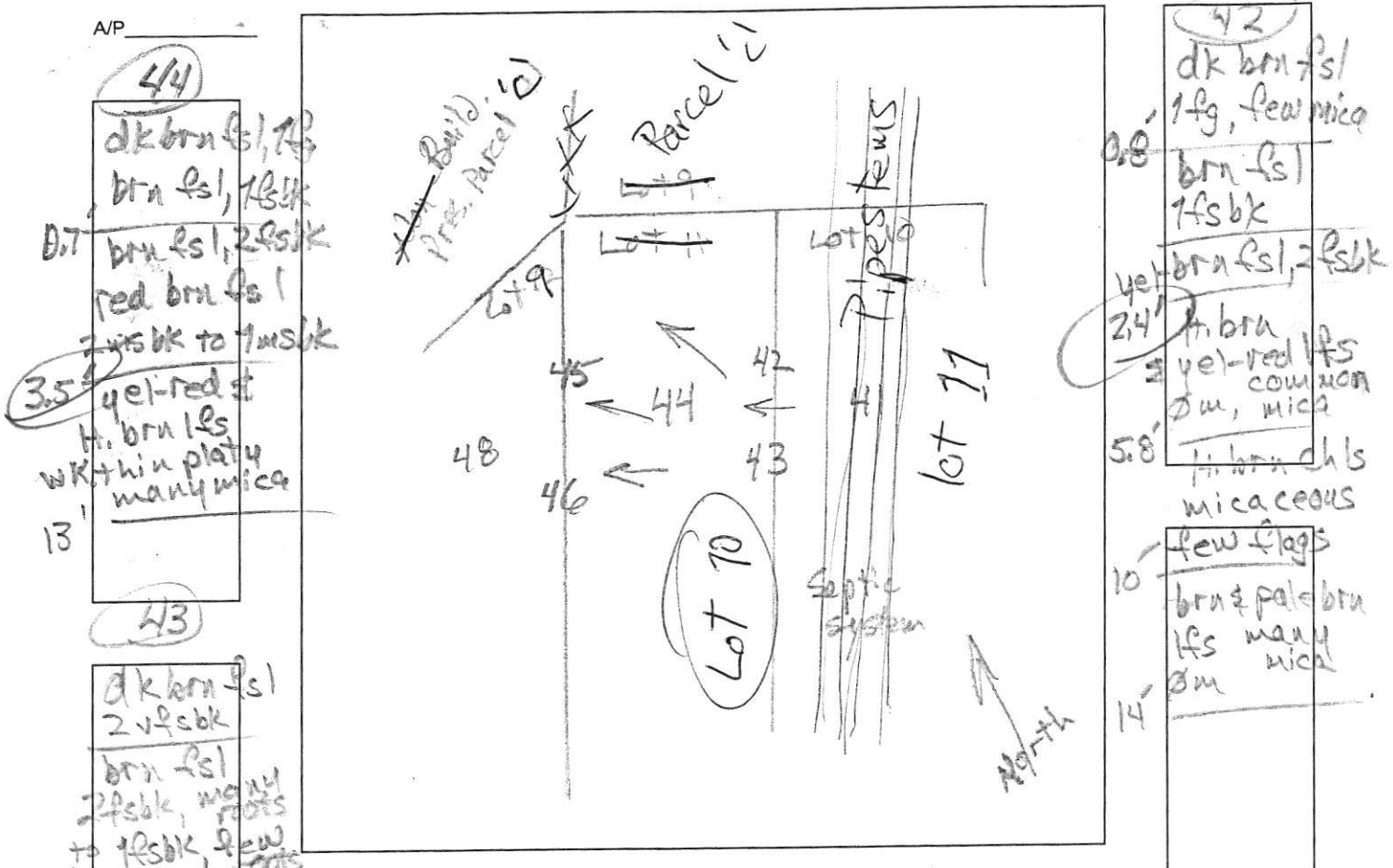
(39)
 dk brn fsl,
 2' sbsk
 12' brn fsl, 1' sbsk
 brn fsl, 2' sbsk
 few mica
 few channers
 3' brn chls
 2msbk
 4' red-brn
 chls, many
 2 coarse mica
 6' wk. thin platy
 13' lb. brn chls
 0m many mica

(40)
 dk brn
 2' sbsk
 7.4' brn h, 2' sbsk
 2.4' brn fsl, 1' sbsk
 few mica
 red, brn
 pale brn
 H's, wk medium
 platy
 common mica
 14'

DATE	TEST #	DEPTH	START	BREAK 1" DROP	STOP 2" DROP	TIME OF 2ND INCH	P/F/H
11/12/14	41	4' / 13'	1:54	1:56	1:59	3	P
11/12/14	39	7.4' / 13'	2:08	2:10	2:13	3	P
11/12/14	40	4' / 14'	2:29	2:31	2:34	3	P

REMARKS _____
 SANITARIAN R. P. Ricker BACKHOE Hatfield's OTHERS Donnie Art, Jason
 TEST HOLES USED IN SDA _____ AVG. PERC TIME _____ SQ. FT/BR _____
 TRENCH WIDTH _____ INLET DEPTH _____ MAX. BOT DEPTH _____ EFFECTIVE SW _____

Well; 11' from stake #40 Lot 10



44
 dk brn fs, 1/2
 brn fs, 1/2
 0.7' brn fs, 2 fsk
 red brn fs
 2 fsk to 1 fsk
 3.5' yel-red st
 h. brn fs
 w/ thin platy
 many mica
 13'

43
 dk brn fs
 2 fsk
 brn fs
 2 fsk, many
 roots
 to fsk, few
 roots
 3.5' h. brn fs
 5' sm, dense
 red & brn
 7' fs, thin platy
 11' h. brn fs
 sm, many
 mica
 14' yel-brn chls
 micaceous

42
 dk brn fs/
 1 fg, few mica
 0.8' brn fs
 7 fsk
 yel brn fs, 2 fsk
 2.4' h. brn
 yel-red fs
 common
 sm, mica
 5.8' h. brn chls
 micaceous
 10' few flags
 brn & pale brn
 fs many
 mica
 14'

DATE	TEST #	DEPTH	START	BREAK 1" DROP	STOP 2" DROP	TIME OF 2ND INCH	P/F/H
11/12/14	44	4.7' / 13'	12:24	12:27	12:32	5	P
11/12/14	43	6' / 14'	12:43	12:45	12:50	5	P
11/12/14	42	4.5' / 14'	13:04	13:06	13:09	3	P

REMARKS _____
 SANITARIAN R. Bricker BACKHOE Hatfield's Dennis OTHERS Art, Jason
 TEST HOLES USED IN SDA _____ AVG. PERC TIME _____ SQ. FT/BR _____
 TRENCH WIDTH _____ INLET DEPTH _____ MAX. BOT DEPTH _____ EFFECTIVE S/W _____

Lot 11