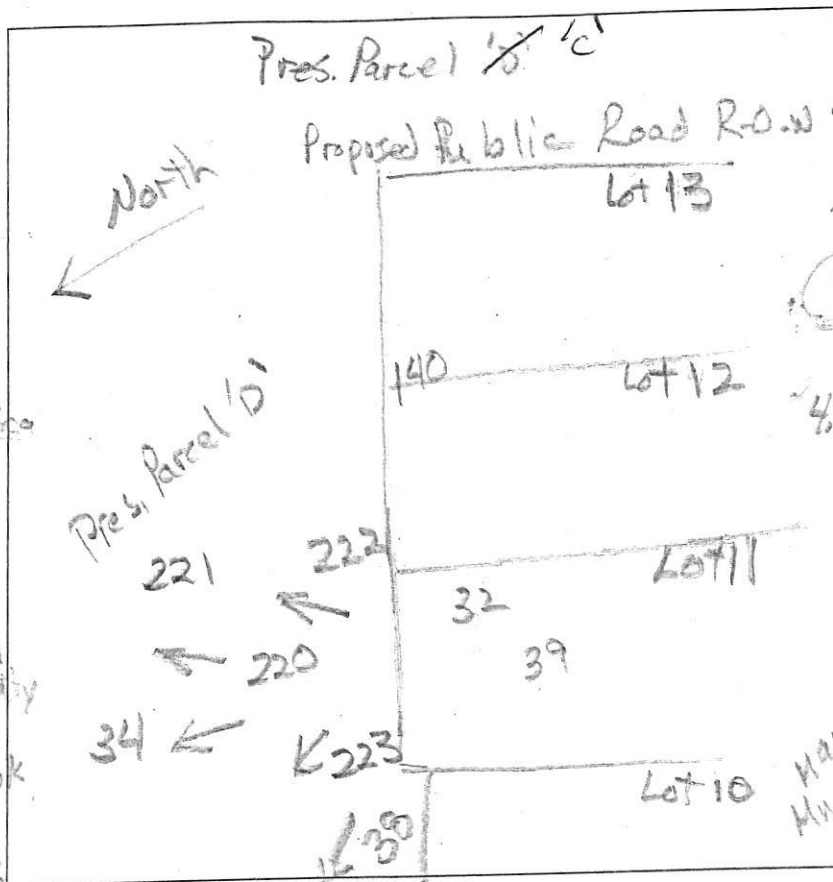


A/P _____



221

dk brn L
2 v f s b k
0.5' red-brn L
2 f s b k
1.6' red-brn
ch L, f s b k
3' H. red ls
thin platy
common mica
4.5' H. red & pale brn
ch L, thick platy
many mica
10' red-yel sl
on lease, mica
10.5' pale brn
& dk brn ch L
thick platy
many mica
Many
Mica
11.5' - moisture
increases
13' - water

Blank box for notes.

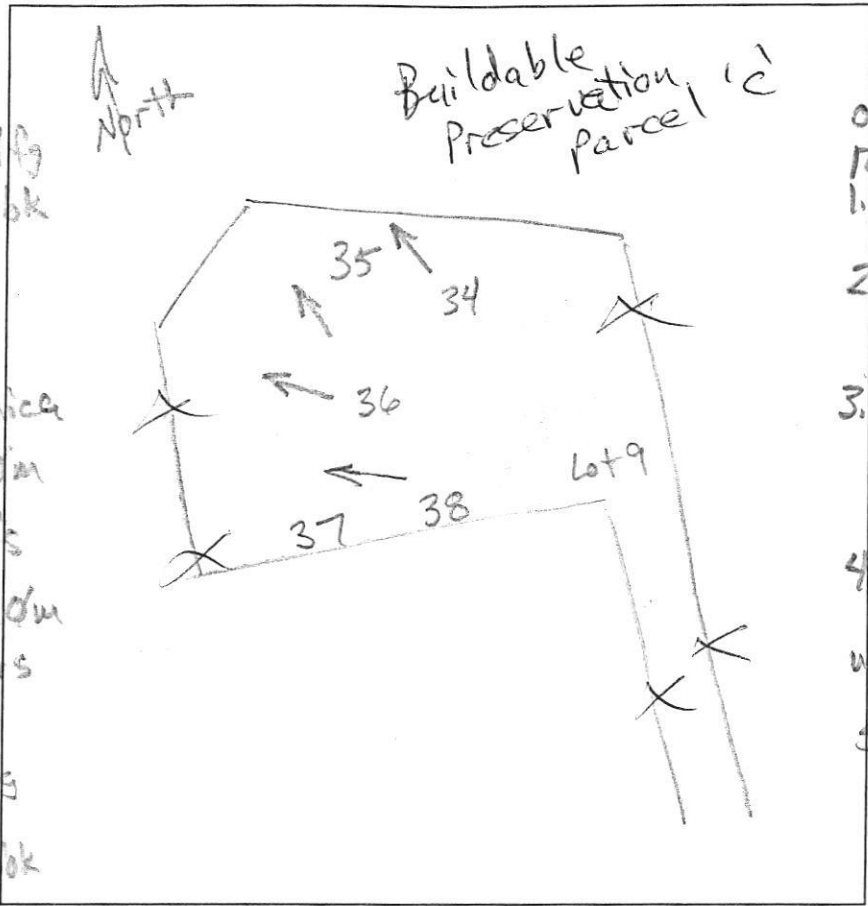
223
0.4' dk brn L
2 v f s b k
1.1' red-brn L
2 m s b k
1' red-brn L
7 c s b k, few
mica
2' brn ls
thick platy
many coarse mica
2.6' brn, pale brn
& red-yel ls
many mica
thin platy
8' pale brn & brn
ls, thick platy

220
0.4' dk brn L, 1 v f s b k
2.5' red-brn L
2 m s b k → 7 c s b k
2.5' brn, pale brn
& red-yel ls
many mica
thin platy
7' brn & pale brn
ch L, thick platy
many mica
13'

222
0.4' dk brn L
2 v f s b k
red-brn L
2 f s b k → 7 c s b k
few mica
2.5' H. brn ls
thick platy
many mica
9' pale brn
ch L, thick platy
many mica
13' few flags

DATE	TEST #	DEPTH	START	BREAK 1" DROP	STOP 2" DROP	TIME OF 2ND INCH	P/F/H
11/23/15	223	14'	Visual		Sidewalk 1.2 g	2.5-8	P
11/23/15	220	5' 13"	10:08	10:10	10:13	3	P
	222	4' 13"	10:21	10:23	10:27	4	P
11/23/15	221	5' 10.5"	10:32	10:40	11:54	14	P

REMARKS _____
 SANITARIAN R Bricker BACKHOE Hatfields OTHERS Jason Alexander
Dannie Jason Van Kirk
 TEST HOLES USED IN SDA _____ AVG. PERC TIME _____ SQ. FT/BR _____
 TRENCH WIDTH _____ INLET DEPTH _____ MAX. BOT DEPTH _____ EFFECTIVE SW _____



(27)
 dk brn fsl, 1fsbk
 brn fsl, 1fsbk
 brn fsl
 2' 2msbk, few mica
 2' yel-brn fsl
 2msbk, few mica
 2.8' H. brn fsl, dm
 common mica
 few channels
 8' pale brn fsl, dm
 many mica
 few channels
 13.5'

(36)
 dk brn fsl, 1fsbk
 0.7' brn fsl, 2fsbk
 red-brn fsl, 2msbk
 1.7' brn fsl, 2msbk
 common mica
 2.7' pale brn fsl, few mica
 dm
 3.3' yel-red
 pale brn fsl
 medium platy
 common mica
 4.2' pale brn fsl
 wkt thin platy
 many mica
 5.5'

(38)
 dk brn fsl, 1fsbk
 brn fsl
 1fsbk to 2fsbk
 2' brn fsl, 1msbk
 2.7' red & brn
 chls, thin platy
 micaceous
 4' brn fsl, dm
 common mica
 6' brn fsl
 s.s.g, common mica
 9' red & brn
 chls, many mica
 13'

brn chls
 dm, many mica
 8' grey-brn fsl
 medium platy
 many mica
 13.5'

DATE	TEST #	DEPTH	START	BREAK 1" DROP	STOP 2" DROP	TIME OF 2ND INCH	P/F/H
11/2/14	37	4.3' / 13.5'	11:21	11:24	1:29	5	P
11/12/14	38	3.5' / 13'	11:37	11:39	1:43	4	P
11/13/14	36	4' / 13.5'	11:59	12:01	12:04	3	P
11/13/14	35	4' / 13'	12:18	12:20	12:24	4	P
11/13/14	34	4.3' / 10'	12:33	12:35	12:38	3	P

(35)
 brn fsl, 1fsbk
 red-brn fsl
 2msbk, few mica
 4 to 1msbk mica
 6.5' red-brn fsl
 2msbk, many mica
 2.7' yel-red & brn
 fsl, thin platy
 many mica
 8' brn & pale brn
 fsl, thin platy
 many mica
 5' brn vchls
 w/ 10% flags
 1 (~45% rock)

(34)
 dk brn fsl, 1fsbk
 to brn fsl, 2fsbk
 0.6' red-brn chsl
 1msbk, common mica
 2.2' yel-red to grey-brn
 vchls, common mica
 1 dm
 3.5' yel-red & pale brn
 chls, many mica
 5.8' brn fsls, platy
 few mica
 8'

REMARKS
 SANITARIAN R. Bricker BACKHOE Hatfield's OTHERS Art
 TEST HOLES USED IN SDA _____ AVG. PERC TIME _____ SQ. FT/BR _____
 TRENCH WIDTH _____ INLET DEPTH _____ MAX. BOT DEPTH _____ EFFECTIVE SW _____
 grey-brn chls, dm few mica
 Lot 9