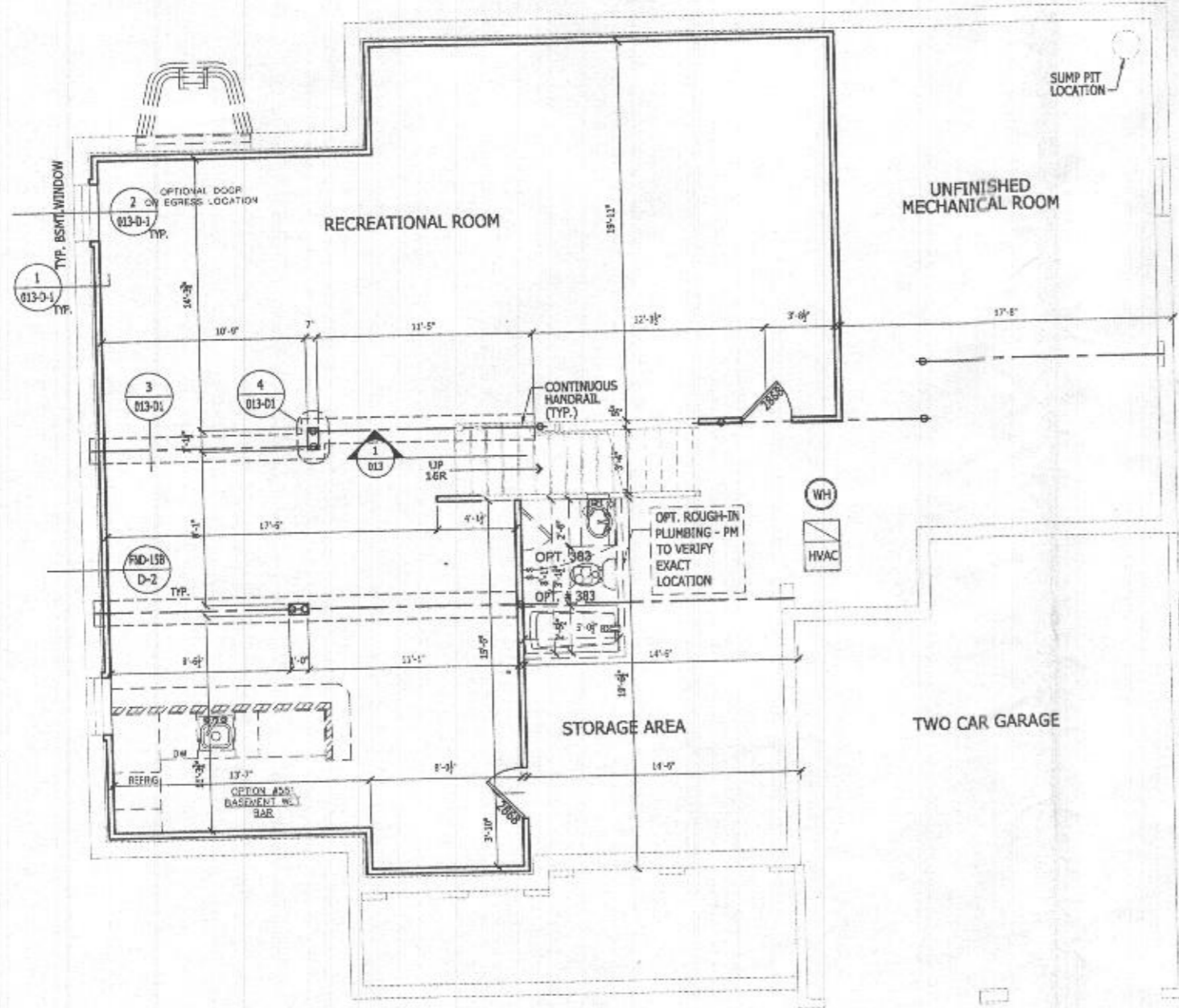


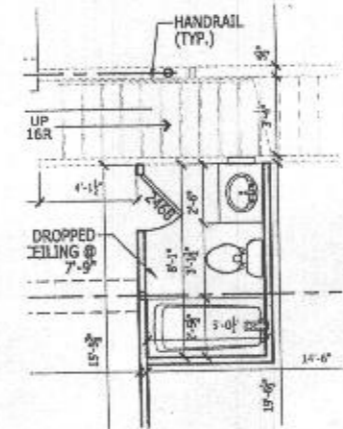
B20002422 Lot 4 Health Dept Floor Plans

© TB Proprietary Corp.

ALL IDEAS, DESIGNS, ARRANGEMENTS AND PLANS INDICATED OR REPRESENTED BY THIS DRAWING ARE OWNED BY AND THE PROPERTY OF TOLL BROTHERS, INC. AND ARE COPYRIGHTED. THEY WERE CREATED, EVOLVED AND DEVELOPED FOR USE ON, AND IN CONNECTION WITH THE SPECIFIED PROJECT. NONE OF SUCH IDEAS, DESIGNS, ARRANGEMENTS OR PLANS SHALL BE USED BY OR DISCLOSED TO ANY PERSON, FIRM OR CORPORATION FOR ANY PURPOSE WHATSOEVER WITHOUT THE WRITTEN PERMISSION OF TOLL BROTHERS, INC. WRITTEN PERMISSIONS ON THESE DRAWINGS SHALL HAVE PRECEDENCE OVER SCALED DIMENSIONS CONTRACTORS SHALL VERIFY, AND BE RESPONSIBLE FOR ALL DIMENSIONS AND CONDITIONS ON THE JOB AND TOLL BROTHERS OFFICE MUST BE NOTIFIED OF ANY VARIATIONS FROM THE DIMENSIONS AND CONDITIONS SHOWN BY THESE DRAWINGS.



**FINISHED BASEMENT PLAN**  
SCALE: 1/4" = 1'-0"  
ALL ELEVATION

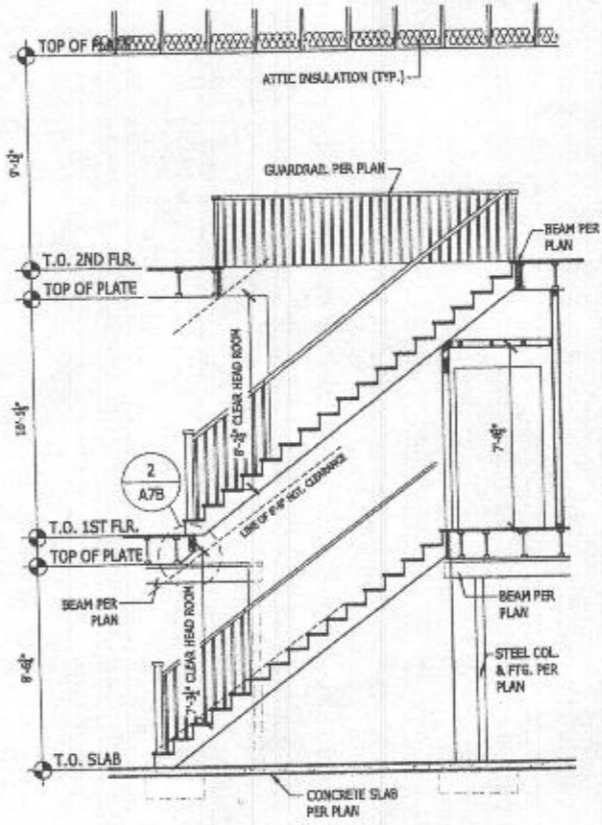


**OPT. 383- OPTIONAL BATH FOR FINISHED LOWER LEVEL**  
SCALE: 1/4" = 1'-0" ALL ELEVATION

*5-bed rooms w/ rough-in bath in unfinished basement*

**FINISHED LOWER LEVEL NOTES**

- REFER TO THE FOUNDATION PLANS FOR "FOUNDATION NOTES", DETAILS AND THE REMAINDER OF THE PLAN.
- REFER TO THE SECTIONS SHEET FOR "SECTION NOTES" AND DETAILS.
- REFER TO THE ELECTRICAL SHEET FOR "ELECTRICAL NOTES" AND "ELECTRICAL LEGEND".
- VERIFY WITH LOCAL MUNICIPALITY/ COMMUNITY FOR EGRESS FROM A FINISHED BASEMENT.
- THE INSIDE AND OUTSIDE PERIMETER DRAIN (OUTSIDE DRAIN) SHOULD BE EITHER DAY LIGHTED (WHEN GRADE ALLOWS) OR TIED INTO THE SUMP PUMP AS WELL AS THE DAYLIGHT BASEMENT DOOR DRAIN.
- THE SUMP PUMP SHOULD BE INCLUDED AS A STANDARD PART OF THIS OPTION AND BE NO LESS THAN 1/2 HORSEPOWER, UNLESS PERIMETER DRAINS ARE GRAVITY CAPABLE.
- WATERPROOFING WITH A 10 YEAR GUARANTEE SHOULD BE STANDARD IN LIEU OF DAMP PROOFING.
- BASEMENT WALLS (INSIDE OF CONCRETE FOUNDATION WALLS) SHOULD BE 2X4 STUDS WALLS @ 16" O.C. WITH MINIMUM 2" SPACE BETWEEN BACK OF FRAMING AND INSIDE FACE OF FOUNDATION WALL (TO ALLOW FOR VENTILATION)
- NO VAPOR BARRIER IS TO BE INSTALLED AS PART OF THE BASEMENT WALL FRAMING AS IT WILL HINDER VENTILATION AND PROMOTE THE POSSIBILITY FOR MOLD GROWTH.
- CEILINGS SHOULD BE 2X2 REVEAL EDGE SUSPENDED TYPE OR DRYWALL, AT THE DISCRETION OF THE DIVISIONAL VICE PRESIDENT.
- HVAC SHOULD ALLOW FOR SEVERAL RETURNS AS WELL AS FEEDS TO THE OUTSIDE WALLS TO ADEQUATELY HEAT AND AIR CONDITION THE BASEMENT AREA.
- RELOCATE SUMP PUMP TO AN AREA OF THE BASEMENT NOT BEING FINISHED.
- INCLUDE ADDITIONAL 15 AMP CIRCUIT FOR LIGHTING IN THE FINISHED BASEMENT AREA.
- ELECTRICAL PANEL LOCATION IS MOVED TO UNFINISHED SPACE.
- FINISH LOWER LEVEL LIGHTING SHALL BE BASED ON (1) 60 WATT, RECESSED FIXTURE, FOR EVERY 100 SQUARE FEET OF FINISHED AREA FOR DRYWALL CEILINGS (AS SHOWN ON PLAN) OR INSTALL 2X2 FLUORESCENT LIGHTING APPROXIMATELY EVERY 100 SQUARE FEET FOR 2X2" REVEAL EDGE SUSPENDED TYPE CEILING, AT THE DISCRETION OF THE DIVISIONAL VICE PRESIDENT.
- 2X4 FRAME WALLS, AGAINST FOUNDATION WALLS, TO BE INSULATED WITH UNFACED BATTS R-13. LOWER HALF OF WALLS SHALL BE DENS GLASS OR EQUAL, TOP 1/2" GYPSUM WALLBOARD.



**1 BUILDING SECTION**  
013 Scale: 1/4" = 1'-0"

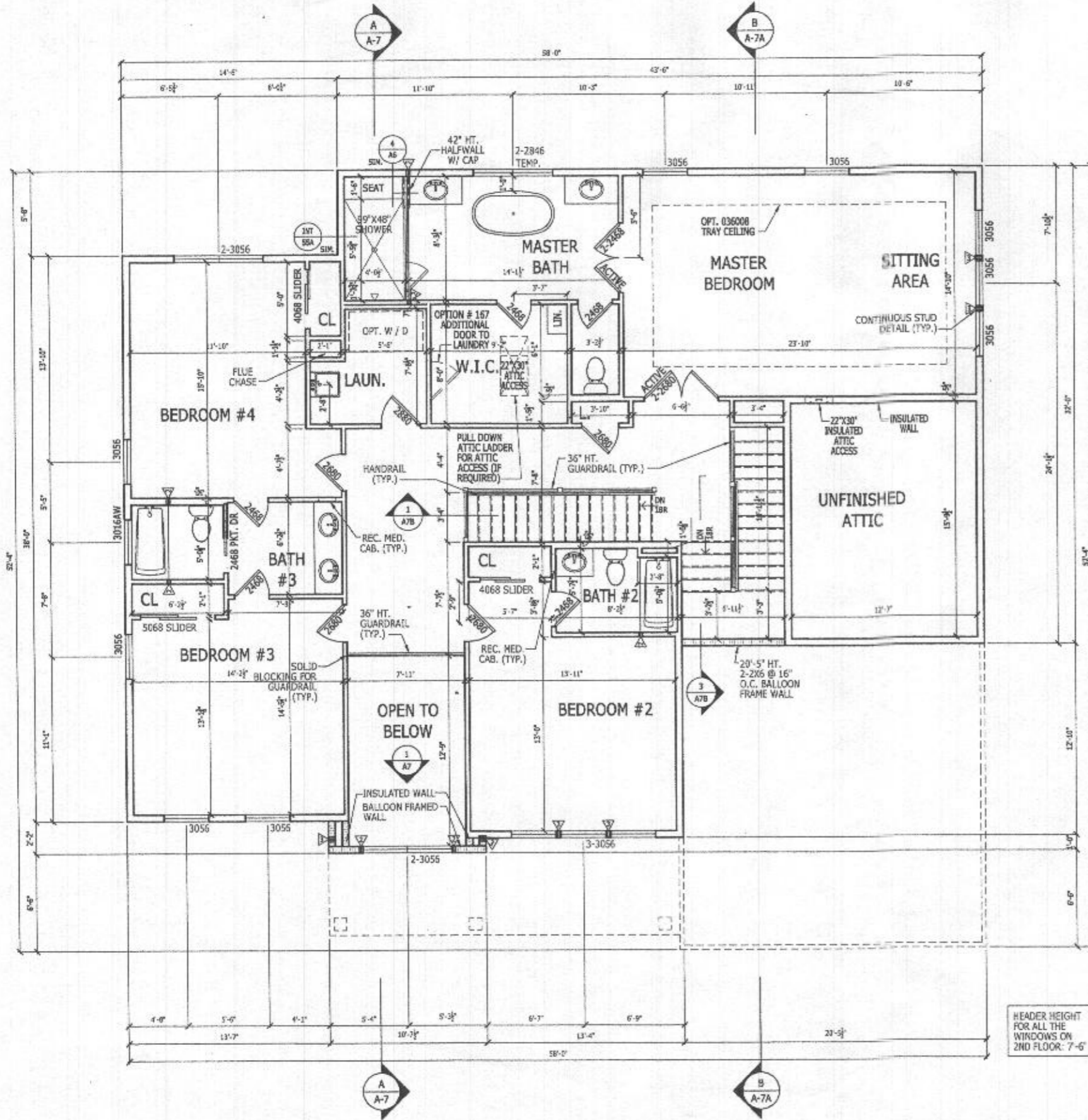
**REVISED**  
Date: 8/12/2020  
Comments: B20-29

RIGHT HAND SET

|   |                         |
|---|-------------------------|
| <b>TOLL ARCHITECTURE</b>  |                         |
| PHILADELPHIA · ORLANDO<br>DALLAS · LOS ANGELES · SEATTLE<br>250 Gibraltar Road, Horsham, PA 19044<br>P 215-293-5300   F 215-293-5314<br>A Division of Toll Brothers |                         |
| SHEET REVISION INFO   | SET REVISION INFO       |
|   | 202347                  |
| PRODUCT LINE  | MODEL/PROJECT NAME      |
|   | <b>DUMONT</b>           |
|   | ELEVATION NAME          |
|   | <b>CRAFTSMAN</b>        |
| DRAWN BY - K.SIDHURIA   | CHECKED BY - TOLLARCH   |
|   | SHEET DATE - 03.13.2019 |
| <b>SHEET DESCRIPTION</b>  |                         |
| OPT # 013- FINISHED BASEMENT PLAN   |                         |
| SHEET NUMBER  | 013                     |
| SERIAL NUMBER   | 1015.1                  |



ALL IDEAS, DESIGNS, ARRANGEMENTS AND PLANS INDICATED OR REPRESENTED BY THIS DRAWING ARE OWNED BY AND THE PROPERTY OF TOLL BROTHERS, INC. AND ARE COPYRIGHTED. THEY WERE CREATED, EVOLVED AND DEVELOPED FOR USE ON, AND IN CONNECTION WITH THE SPECIFIED PROJECT. NONE OF SUCH IDEAS, DESIGNS, ARRANGEMENTS OR PLANS SHALL BE USED BY OR DISCLOSED TO ANY PERSON, FIRM OR CORPORATION FOR ANY PURPOSE WHATSOEVER WITHOUT THE WRITTEN PERMISSION OF TOLL BROTHERS, INC. WRITTEN DIMENSIONS OR THESE DRAWINGS SHALL HAVE PRECEDENCE OVER SCALED DIMENSIONS AND CONDITIONS SHOWN BY THESE DRAWINGS. TOLL BROTHERS OFFICE MUST BE NOTIFIED OF ANY VARIATIONS FROM THE DIMENSIONS AND CONDITIONS SHOWN BY THESE DRAWINGS.



**SECOND FLOOR PLAN**

SCALE: 1/4" = 1'-0"

9' CEILING HEIGHT  
CRAFTSMAN

HEADER HEIGHT  
FOR ALL THE  
WINDOWS ON  
2ND FLOOR: 7'-6"

**LATERAL BRACING**  
THIS HOUSE HAS BEEN ENGINEERED TO RESIST ASCE 7-10 WIND LOAD USING AN ENGINEERED METHOD FOR 115 MPH BASIC WIND SPEED.  
FOR OSB + DRYWALL ATTACHMENT SEE A4L1 DETAIL SHEET

RIGHT HAND SET

SHEET DESCRIPTION  
SECOND FLOOR PLAN

SERIAL NUMBER

SHEET NUMBER  
**A3\_31**

DRAWN BY - K.SIDHUPURA  
CHECKED BY - TOLLARCH  
SHEET DATE - 03.13.2019

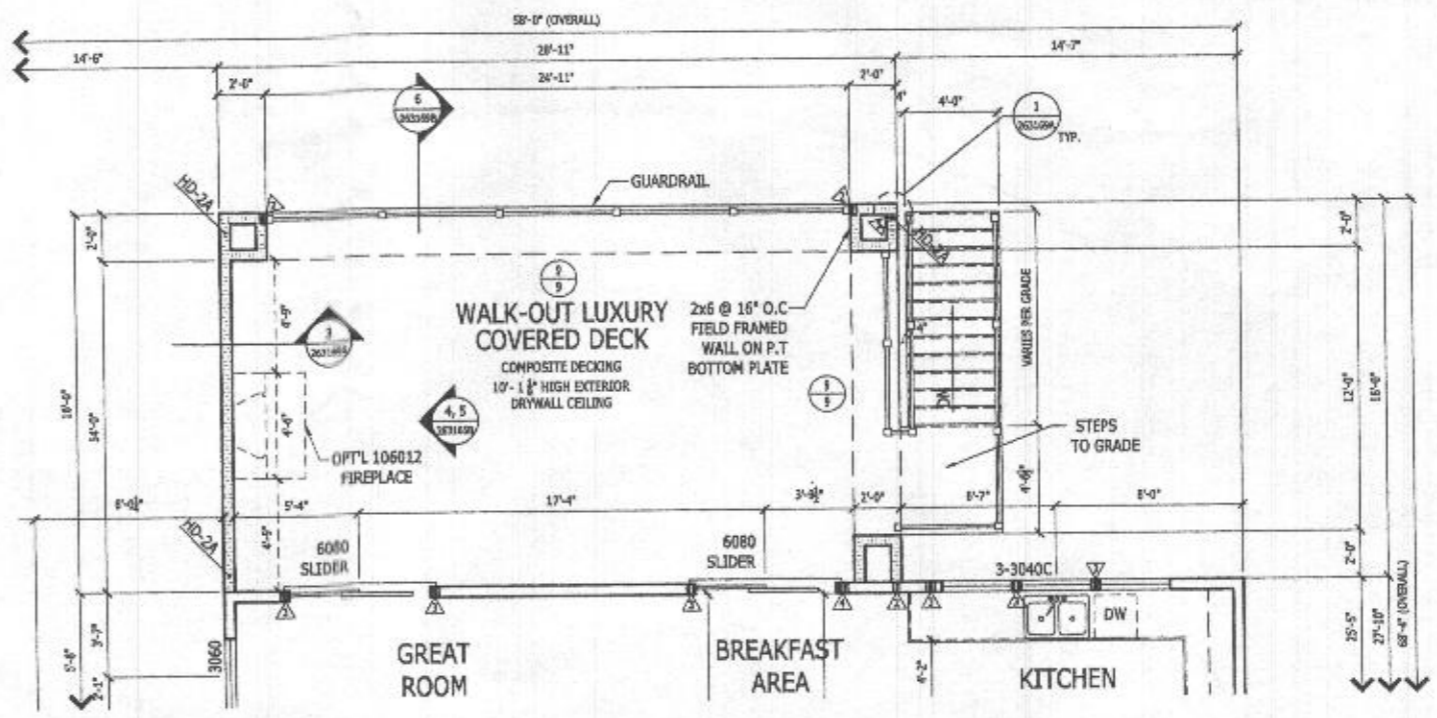
PRODUCT LINE  
MODEL/PROJECT NAME  
**DUMONT**  
ELEVATION NAME  
**CRAFTSMAN**

SHEET REVISION INFO  
SET REVISION INFO  
202347

**TOLLARCHITECTURE**  
PHILADELPHIA · ORLANDO  
DALLAS · LOS ANGELES · SEATTLE  
250 Gibraltar Road, Horsham, PA 19044  
P 215-293-5300 | F 215-293-5314  
A Division of Toll Brothers

© 2023 TOLL BROTHERS, INC. ALL RIGHTS RESERVED. THIS DRAWING IS THE PROPERTY OF TOLL BROTHERS, INC. AND IS NOT TO BE REPRODUCED, COPIED, OR TRANSMITTED IN ANY FORM OR BY ANY MEANS, ELECTRONIC OR MECHANICAL, WITHOUT THE WRITTEN PERMISSION OF TOLL BROTHERS, INC. ANY REVISIONS TO THIS DRAWING SHALL BE INDICATED BY A REVISION CIRCLE AND A NUMBER. THE USER OF THIS DRAWING SHALL BE RESPONSIBLE FOR VERIFYING ALL DIMENSIONS AND CONDITIONS SHOWN ON THE DRAWING.

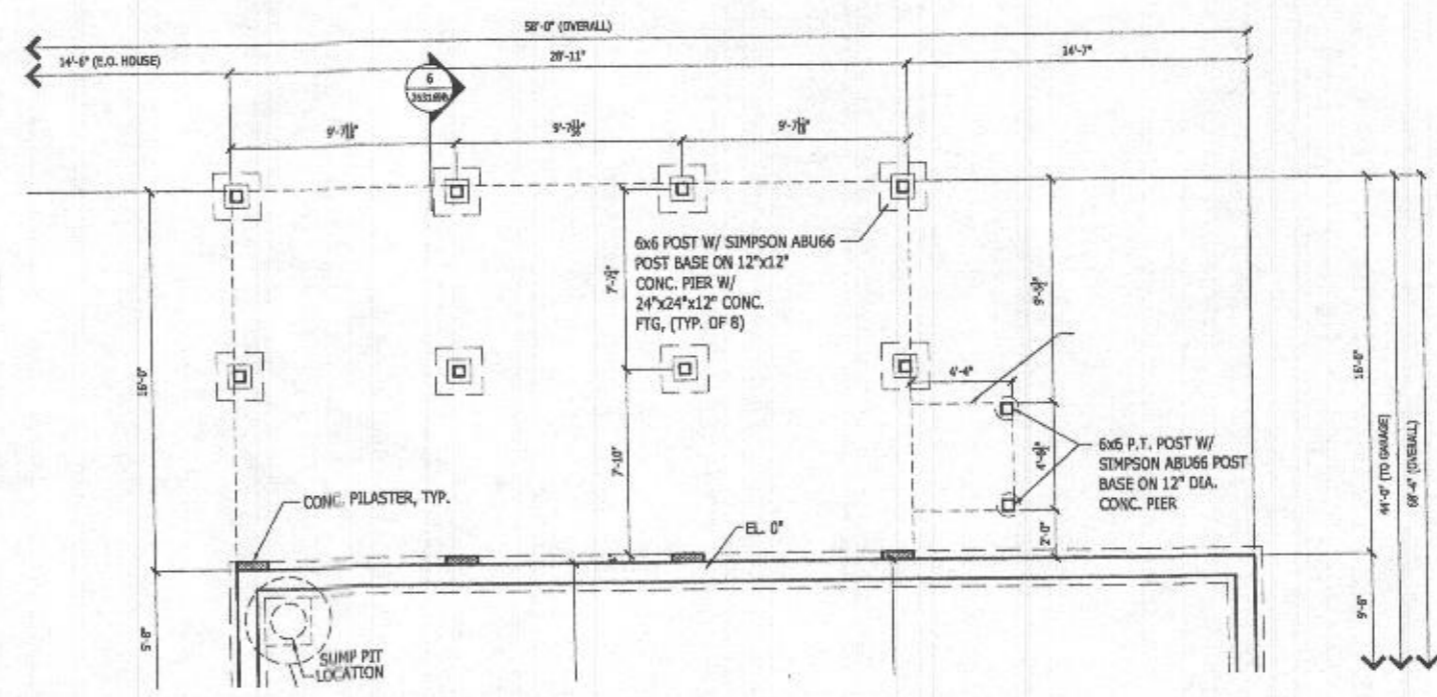
© TB Proprietary Corp.



**PARTIAL FIRST FLOOR PLAN**

Scale: 1/4" = 1'-0"

CRAFTSMAN SHOWN



**PARTIAL BASEMENT FOUNDATION PLAN**

Scale: 1/4" = 1'-0"

CRAFTSMAN SHOWN

**LATERAL BRACING**  
 THIS HOUSE HAS BEEN ENGINEERED TO RESIST ASCE 7-10 WIND LOAD USING AN ENGINEERED METHOD FOR 11.5 MPH BASIC WIND SPEED.  
 FOR OSB + DRYWALL ATTACHMENT SEE A4.1 DETAIL SHEET

SEE OPT.263165 FOR ADDITIONAL PLANS AND DETAILS

HEADER HEIGHT FOR ALL THE WINDOWS ON 2ND FLOOR: 7'-6"

**RIGHT HAND SET**

|  |   |
|--|---|
| <b>TOLL ARCHITECTURE</b>                                 |   |
| PHILADELPHIA · ORLANDO<br>DALLAS · LOS ANGELES · SEATTLE | 250 Gibraltar Road, Morsham, PA 19044<br>P 215-293-5300   F 215-293-5314<br>A Division of Toll Brothers |
| SHEET REVISION INFO                                      | SET REVISION INFO   |
|  | 202347  |
| PRODUCT LINE   | MODEL/PROJECT NAME  |
|  | <b>DUMONT</b>   |
|  | ELEVATION NAME  |
| DRAWN BY - A. BIEBSTEIN                                  | CHECKED BY - TOLL ARCH.   |
|  | SHEET DATE - 08/26/19   |
| SHEET DESCRIPTION  |   |
| OPT # 263169- WALK-OUT LUXURY COVERED DECK               |   |
| SHEET NUMBER   | 263169  |
| SERIAL NUMBER  | 1015.1  |

