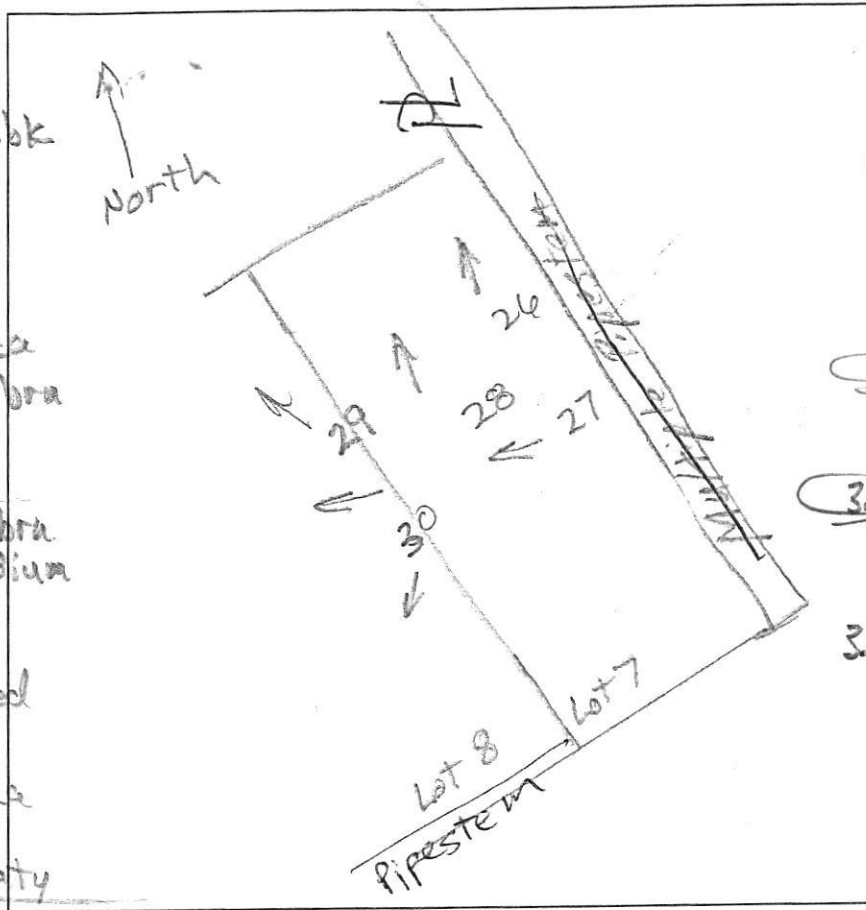


A/P



28  
 0.7' brn fsl 2 fskb  
 red-brn fsl  
 2' 2 fskb, mica  
 red-brn chls  
 1 msbk, few mica  
 2.8' pale yel-red lt. brn  
 fts, many mica  
 3.7' yel-red lt. brn  
 fts, wk. medium  
 platy  
 many mica  
 8.5' pale yel-red  
 2' pale brn  
 chls, many mica  
 few flags  
 13' medium platy

26  
 dk brn s  
 2' fskb to 2 fskb  
 0.4' brn fsl  
 1/2 msbk  
 1.1' red-brn fsl  
 2 fskb  
 1.6' yel-red chls  
 1 msbk, few mica  
 3.4' yel-red ls  
 thin platy  
 common mica  
 3.9' yel-red  
 7 pale brn  
 fts, thin platy  
 mica ceous  
 13' pale brn  
 chls, medium  
 platy  
 micaceous  
 14'

DATE	TEST #	DEPTH	START	BREAK 1" DROP	STOP 2" DROP	TIME OF 2ND INCH	P/F/H
11/13/14	28	4.7' / 13'	11:06	11:08	11:11	3	P
11/13/14	27	4.1' / 14'	11:20	11:22	11:25	3	P
11/13/14	26	4.7' / 14'	11:37	11:40	11:47	7	P

27  
 dk brn s  
 1 fskb to 2 fskb  
 brn fsl  
 1 msbk  
 0.9' red-brn fsl  
 1 msbk, few mica  
 2.5' lt. brn fts  
 common mica  
 3.8' lt. brn s  
 yel-red fts  
 wk. thin platy  
 many mica  
 9' pale brn  
 chls, many mica  
 14' medium platy

REMARKS \_\_\_\_\_  
 SANITARIAN R Bricker BACKHOE Hatfield's (Connie) OTHERS Art Leonard  
 TEST HOLES USED IN SDA \_\_\_\_\_ AVG. PERC TIME \_\_\_\_\_ SQ. FT/BR \_\_\_\_\_  
 TRENCH WIDTH \_\_\_\_\_ INLET DEPTH \_\_\_\_\_ MAX. BOT DEPTH \_\_\_\_\_ EFFECTIVE S/W \_\_\_\_\_

Lot 7