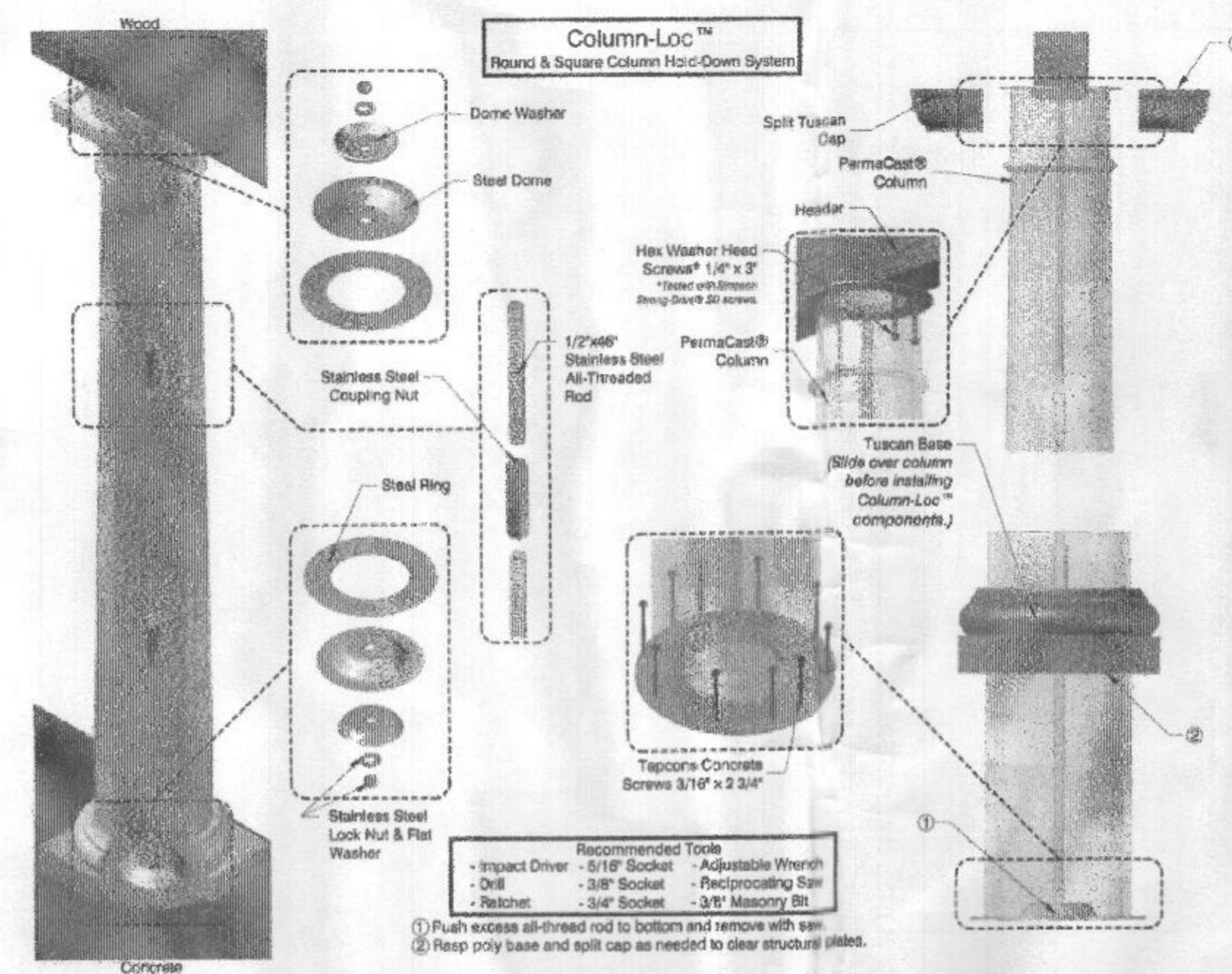
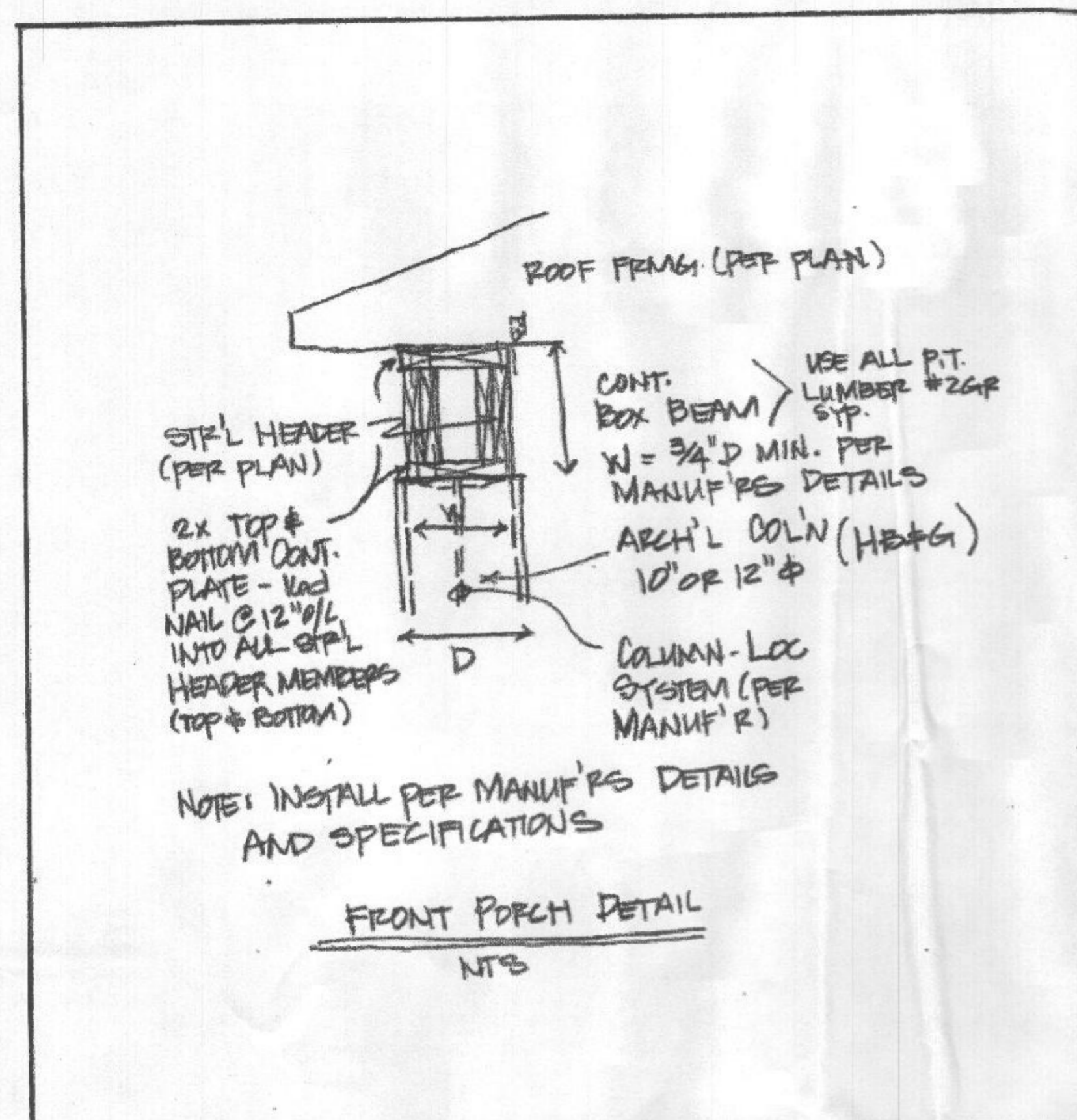


HB&G PORCH COLUMN DETAILS:

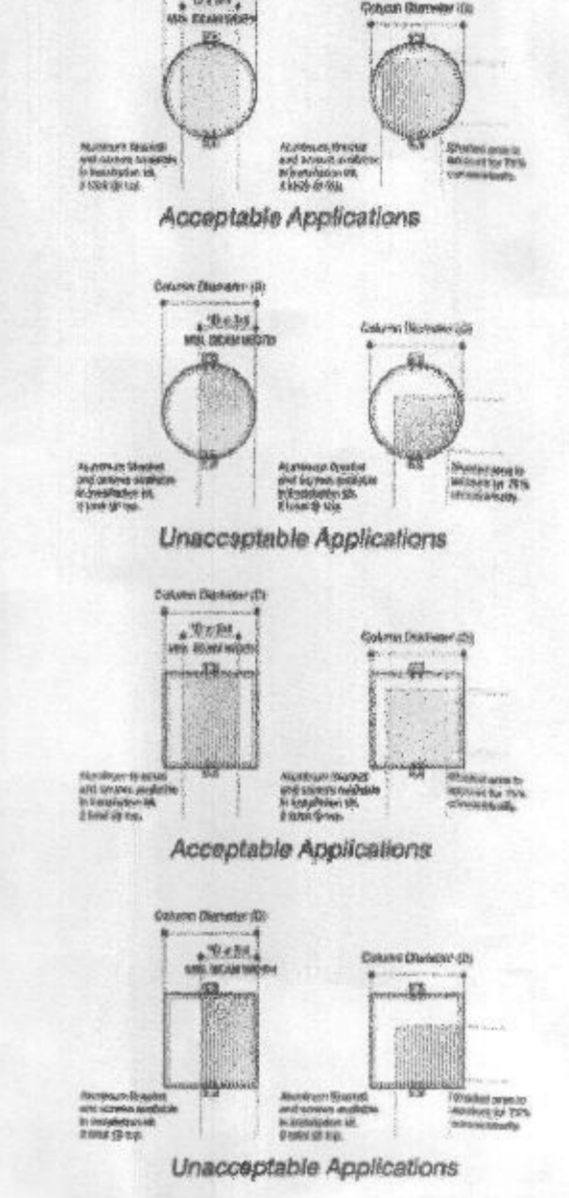
Date
September 09, 2020



Building Code Compliance

HB&G has updated our product testing to comply with changes to the Building Codes (IBC/IRC) and to the Acceptance Criteria for Fiberglass Columns. The 2 major changes that impacted PermaCast and PermaLite were:
 • Eccentric Axial Loading - the new maximum allowable load values are based on eccentric (offset) axial load as opposed to concentric (centered) axial loading.
 • Increased Safety Factor - the safety factor on the allowable load was increased from 2.5 times to 5 times

Eccentric loading of columns is not recommended by HB&G.



HB&G recommends following the installation instructions included with the product purchased. HB&G structural products conform to 2015, 2012, and 2009 IBC/IRC.

Round Tapered PermaCast® Plain and Fluted

Bottom Diameter	Eccentric Loading		
	Avg. Allowable Load (Lbs.)	Avg. Ultimate Load (Lbs.)	Concentric Load (Lbs.)
6"	450	2250	800
8"	600	3000	1000
10"	850	4250	1400
12"	1100	5500	1800
14"	1350	6750	2200
16"	1600	8000	2600
18"	1850	9250	3000
20"	2100	10500	3400
22"	2350	11750	3800
24"	2600	13000	4200
26"	2850	14250	4600
28"	3100	15500	5000

Square PermaCast® Plain, Fluted, RoughSawn®, and Recessed Panel

Bottom Diameter	Eccentric Loading		
	Avg. Allowable Load (Lbs.)	Avg. Ultimate Load (Lbs.)	Concentric Load (Lbs.)
6"	510	2550	850
8"	670	3350	1100
10"	930	4650	1500
12"	1190	5950	1900
14"	1450	7250	2300
16"	1710	8550	2700
18"	1970	9850	3100
20"	2230	11150	3500
22"	2490	12450	3900
24"	2750	13750	4300
26"	3010	15050	4700
28"	3270	16350	5100
30"	3530	17650	5500

Round No-Taper PermaCast® Plain and Fluted

Bottom Diameter	Eccentric Loading		
	Avg. Allowable Load (Lbs.)	Avg. Ultimate Load (Lbs.)	Concentric Load (Lbs.)
6"	450	2250	800
8"	600	3000	1000
10"	850	4250	1400
12"	1100	5500	1800
14"	1350	6750	2200
16"	1600	8000	2600
18"	1850	9250	3000
20"	2100	10500	3400
22"	2350	11750	3800
24"	2600	13000	4200
26"	2850	14250	4600
28"	3100	15500	5000

Craftsman Plain and RoughSawn® PermaCast®

Bottom Diameter	Eccentric Loading		
	Avg. Allowable Load (Lbs.)	Avg. Ultimate Load (Lbs.)	Concentric Load (Lbs.)
12" x 12"	800	4000	1400
12" x 14"	900	4500	1500
12" x 16"	1000	5000	1600
12" x 18"	1100	5500	1700
12" x 20"	1200	6000	1800
12" x 22"	1300	6500	1900
12" x 24"	1400	7000	2000
12" x 26"	1500	7500	2100
12" x 28"	1600	8000	2200
12" x 30"	1700	8500	2300

Square PermaLite® Plain and Recessed Panel

Bottom Diameter	Eccentric Loading		
	Avg. Allowable Load (Lbs.)	Avg. Ultimate Load (Lbs.)	Concentric Load (Lbs.)
6"	300	1500	500
8"	400	2000	650
10"	500	2500	800
12"	600	3000	950

Round No-Taper PermaLite®

Bottom Diameter	Eccentric Loading		
	Avg. Allowable Load (Lbs.)	Avg. Ultimate Load (Lbs.)	Concentric Load (Lbs.)
6"	300	1500	500
8"	400	2000	650
10"	500	2500	800
12"	600	3000	950

Square PermaLite® Plain and Recessed Panel

Bottom Diameter	Eccentric Loading		
	Avg. Allowable Load (Lbs.)	Avg. Ultimate Load (Lbs.)	Concentric Load (Lbs.)
6"	300	1500	500
8"	400	2000	650
10"	500	2500	800
12"	600	3000	950

RigidWrap® CPVC Column Wrap

Size	Structural Load Capacity (Lbs.)	
	Vertical	Horizontal
6"	4300	4300
8"	4300	4300
10"	4300	4300
12"	4300	4300

Round Wood Columns

Size	Structural Load Capacity (Lbs.)	
	Vertical	Horizontal
6"	2000	2000
8"	2000	2000
10"	2000	2000
12"	2000	2000

PermaPost®

Size	Structural Load Capacity (Lbs.)	
	Vertical	Horizontal
6"	1800	1800
8"	1800	1800
10"	1800	1800
12"	1800	1800

Wood Porch Posts

Size	Structural Load Capacity (Lbs.)	
	Vertical	Horizontal
6"	1800	1800
8"	1800	1800
10"	1800	1800
12"	1800	1800

Round Fluted Aluminum Columns

Size	Structural Load Capacity (Lbs.)	
	Vertical	Horizontal
6"	1400	1400
8"	1400	1400
10"	1400	1400
12"	1400	1400

Square Fluted Aluminum Columns

Size	Structural Load Capacity (Lbs.)	
	Vertical	Horizontal
6"	1100	1100
8"	1100	1100
10"	1100	1100
12"	1100	1100

Heritage Square Recessed Panel Aluminum Columns

Size	Structural Load Capacity (Lbs.)	
	Vertical	Horizontal
6"	2500	2500
8"	2500	2500
10"	2500	2500
12"	2500	2500

Legend Elite Square Aluminum Columns

Size	Structural Load Capacity (Lbs.)	
	Vertical	Horizontal
6"	1400	1400
8"	1400	1400
10"	1400	1400
12"	1400	1400

RKC Engineering
 P.O. BOX 1015, GAINESVILLE, VA 20156 - 703-753-9207

Job Name: _____ Job Title: _____
 Date: _____ Computed: _____ Page: _____ of _____

HB&G PORCH COLUMN DETAILS
 D-0

NO SCALE

Revisions

JMB Homes
 The Schiner-Rogers Residence

Sheet Title

Details

CSE Designs, Inc.
 7371 Atlas Walk Way,
 Suite 110,
 Gainesville, Virginia 20156
 Ph: 703-969-2378
 Fax: 703-754-9317



Drawing No.

D-0

CONSTRUCTION DETAIL NOTES:

1. TYPICAL ROOF CONSTRUCTION

ASPHALT SHINGLES ON
BR ROOFING FELT ON
1/8" OSB OR 1/4" CDX ON
PREFAB. ROOF TRUSSES (OR 2X OVERBUILD)

2. TYPICAL BRICK VENEER WALL CONSTRUCTION

4" BRICK VENEER MASONRY WALL TIES @ 16" O.C. VERT.
1 1/2" AIR SPACE
1/8" OSB SHEATHING ON 2X STUDS
(REFER TO FRAMING PLANS FOR SIZE and SPACING OF STUDS)
BATT INSULATION (R-13 MIN)
1/2" DRYWALL (UNLESS OTHERWISE NOTED)

3. TYPICAL FLOOR CONSTRUCTION

3/4" SUBFLOOR T & G PLYWOOD GLUED and NAILED ON
PREMANUFACTURED JOISTS OR OPEN WEB TRUSSES
(REFER TO FRAMING PLANS FOR TYPE, SIZE and SPACING)
1/2" DRYWALL (UNLESS OTHERWISE NOTED)

4. TYPICAL SLAB FLOOR CONSTRUCTION

4" CONC. SLAB ON GRADE W/ 6"x6" #4/4 ON
6 MIL POLY VAPOR BARRIER ON
4" GRAVEL FILL W/
1" X 24" PERIMETER INSULATION @ U.O. CONDITION
CONCRETE Fc = 3000 PSI, MIN.
REIN. W/ 1/2" #4 @ 18" O.C.
DESIGN LIVE LOAD = 50 PSF
MINIMUM SOIL BEARING CAPACITY = 2000 PSF.

5. BASEMENT WALL CONSTRUCTION

SEE FOUNDATION PLANS and DETAILS
ON SHEET D1

6. TYPICAL SIDING WALL CONSTRUCTION

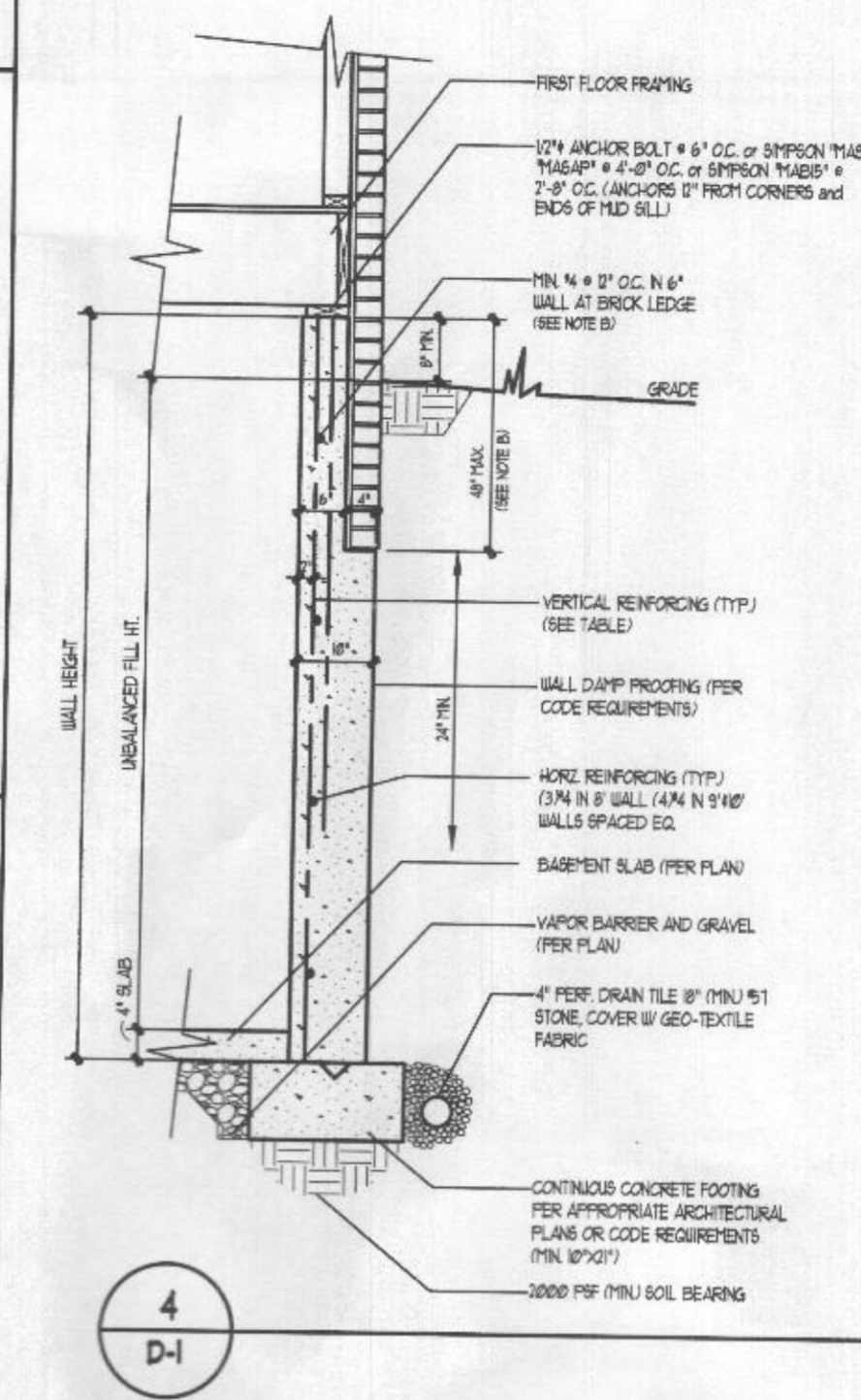
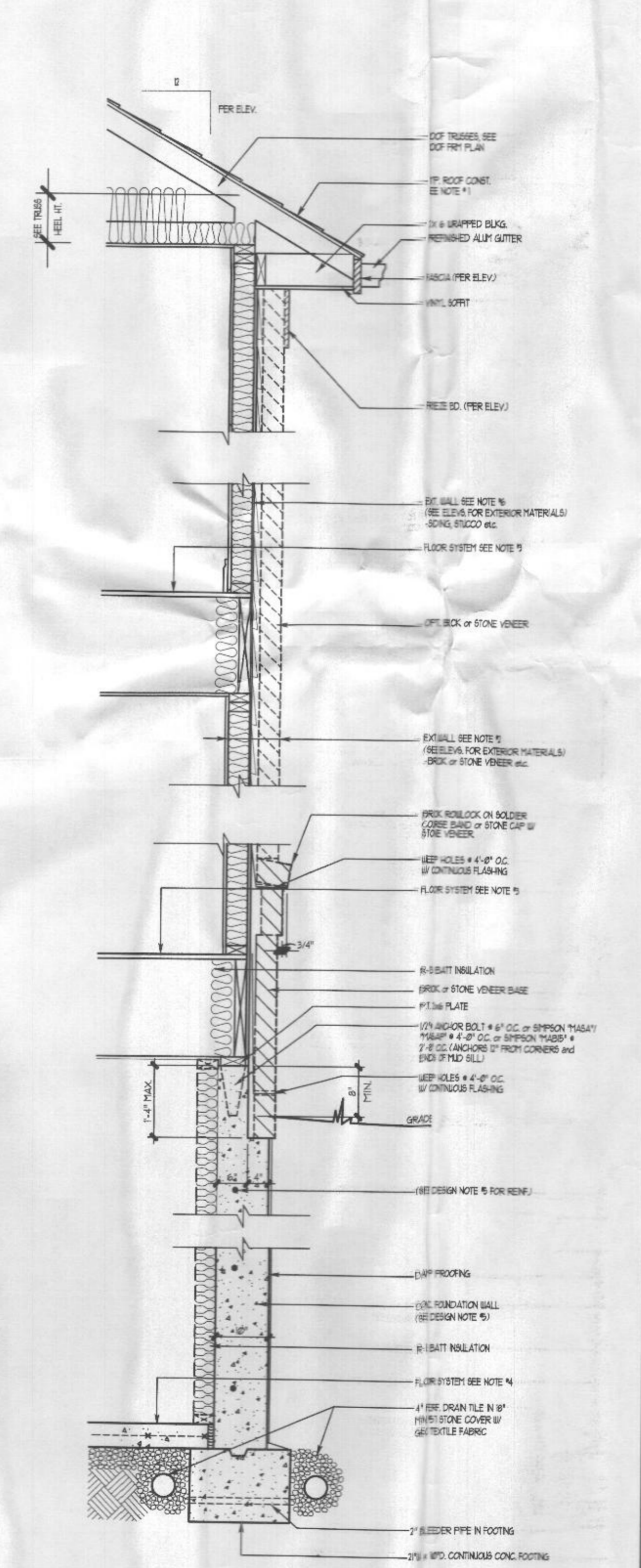
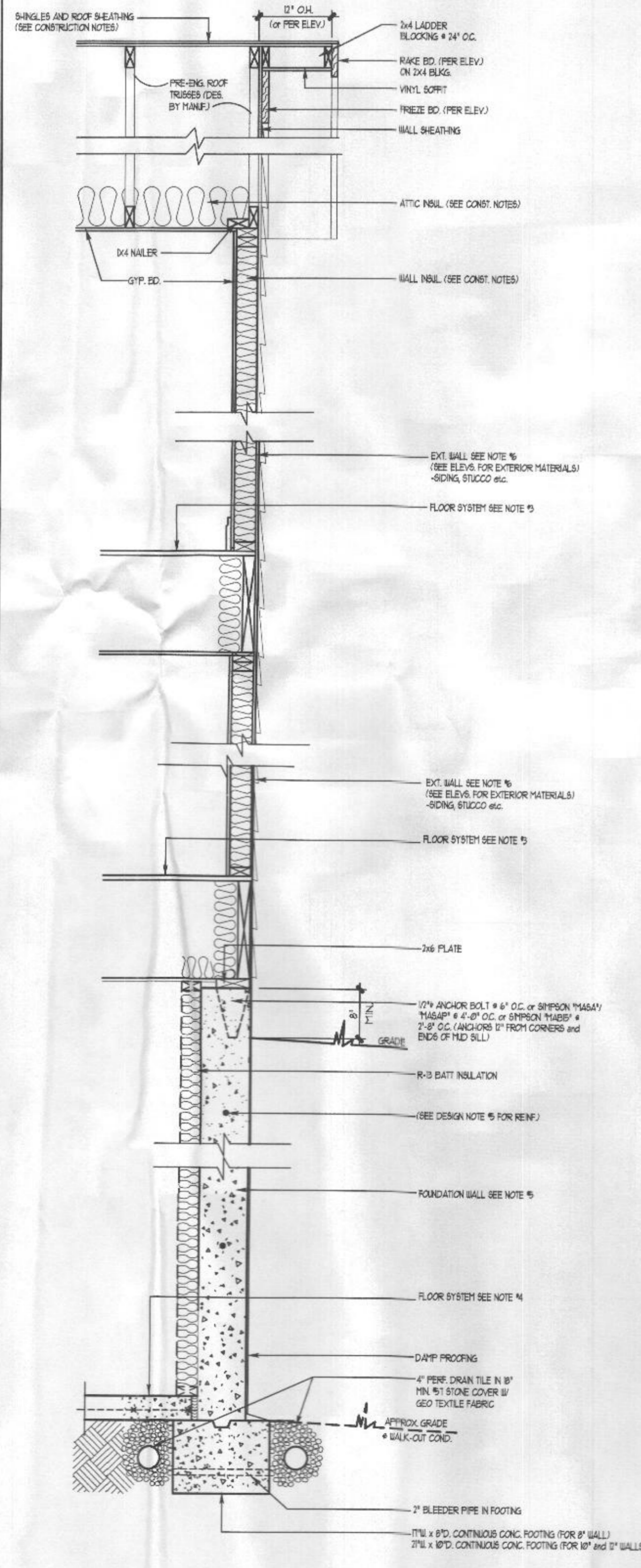
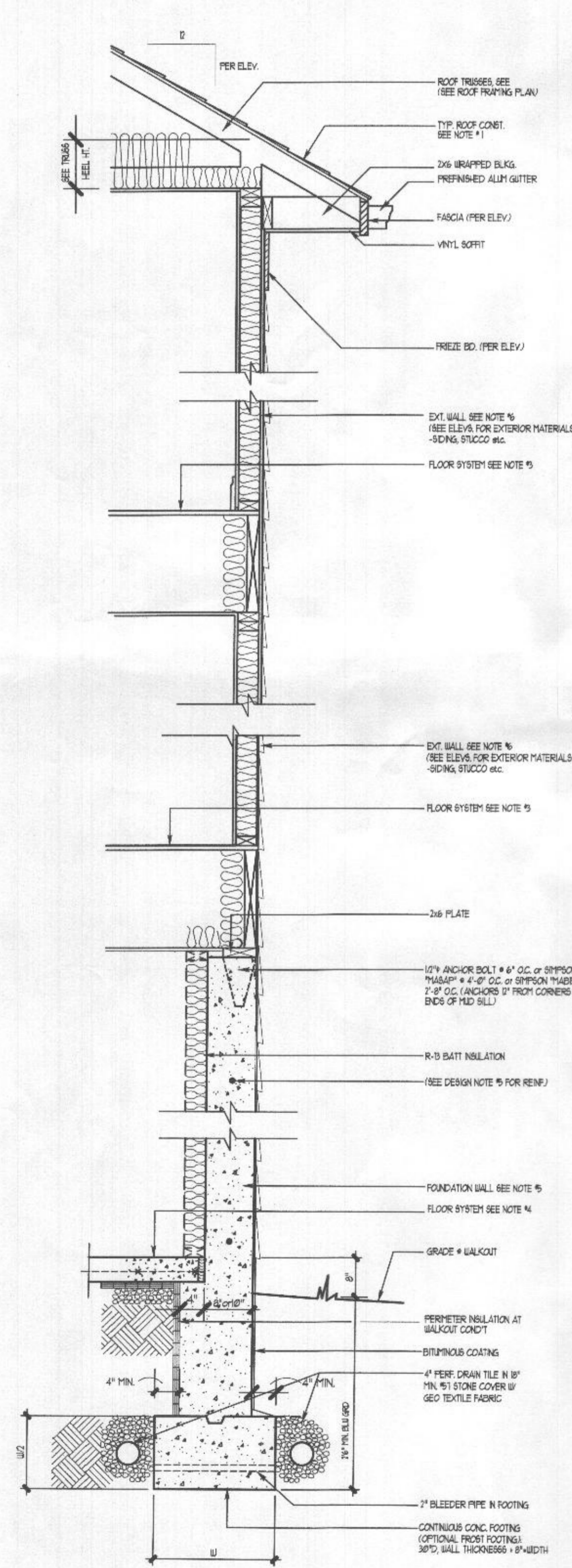
HORIZONTAL SIDING
(REFER TO ELEVATION FOR TYPE and SIZE)
1/8" OSB SHEATHING ON 2X STUDS
(REFER TO FRAMING PLANS FOR TYPE, SIZE and SPACING OF STUDS)
BATT INSULATION (R-13 MIN)
1/2" DRYWALL (UNLESS OTHERWISE NOTED)

7. TYPICAL GARAGE SLAB CONSTRUCTION

4" CONC. SLAB ON GRADE W/ 6"x6" #4/4 ON
6 MIL POLY VAPOR BARRIER ON
4" GRAVEL FILL W/
1" X 24" PERIMETER INSULATION @ U.O. CONDITION
CONCRETE Fc = 3500 PSI, MIN.
REIN. W/ 1/2" #4 @ 18" O.C.
DESIGN LIVE LOAD = 50 PSF
MINIMUM BAR LAP = 36" LAP MESH 1"
MINIMUM SOIL BEARING CAPACITY = 2000 PSF.

8. MUD SILL ANCHORS:

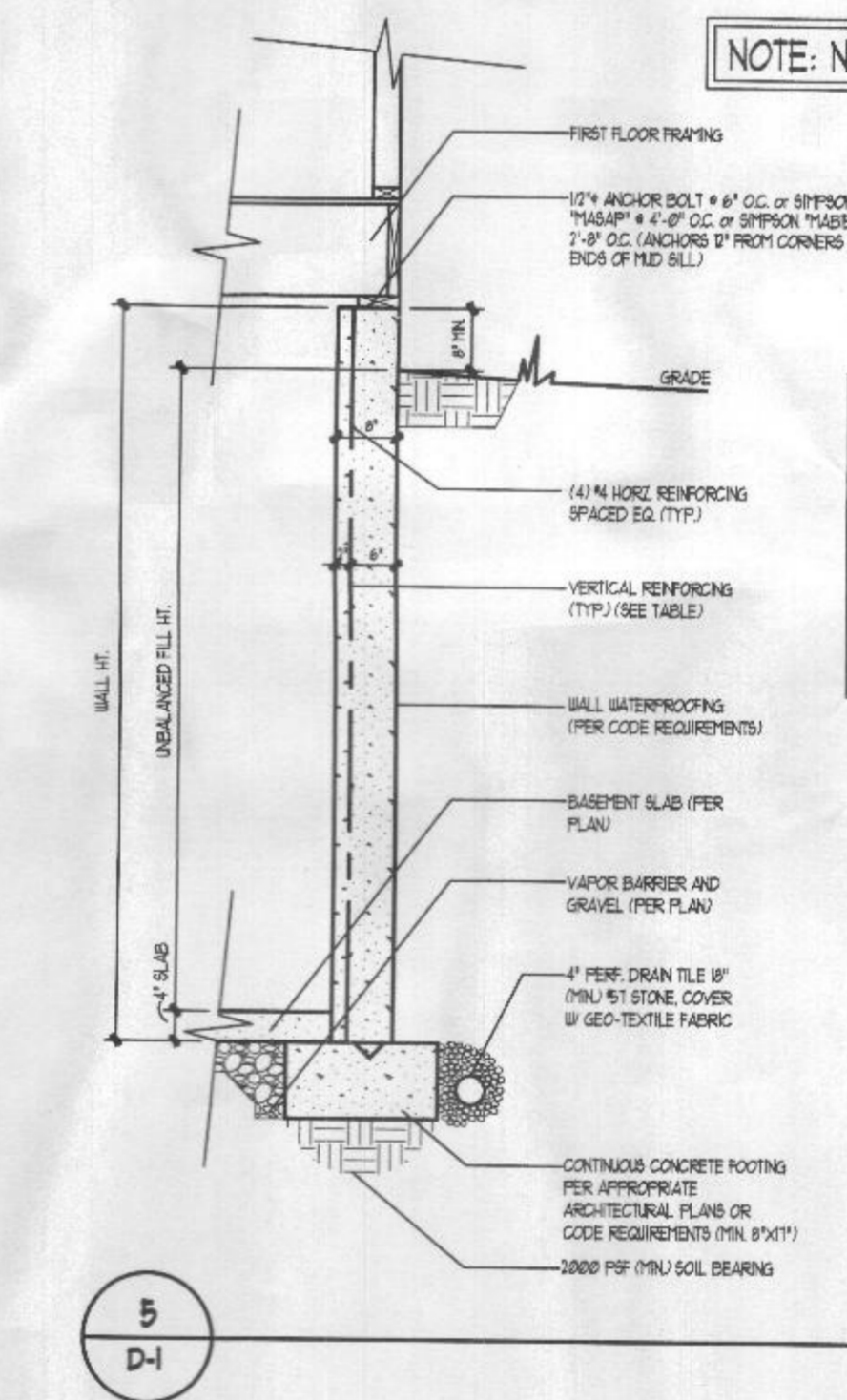
(SIMPSON PRODUCTS)
2X4 SILL PLATE - "LMA42" @ 3'-8" O.C.
2X6 SILL PLATE - "LMA62" @ 4'-0" O.C.
ALTERNATE FOR CAST-IN ANCHORS:
SIMPSON TITEN HD 1/2" x 48" O.C.
(1/2" x 3")



WALL HEIGHT	60 PCF EQV. FLUID PRESSURE SOIL		45 PCF EQV. FLUID PRESSURE SOIL	
	MAXIMUM UNBAL'D FILL	VERTICAL REINFG	MAXIMUM UNBAL'D FILL	VERTICAL REINFG
8'-0"	6'-0"	NONE REQ'D	6'-0"	NONE REQ'D
9'-0"	7'-0"	4 BARS @ 18" O.C. OR 5 BARS @ 16" O.C.	6'-0"	4 BARS @ 18" O.C. OR 5 BARS @ 16" O.C.
10'-0"	<6'-0"	NONE REQ'D	<6'-0"	NONE REQ'D

NOTE B:
BRICK LEDGE DEPTH 40" MAX IF LEDGE DEPTH IS GREATER THAN 40".
USE 1" CONC. FOUNDATION WALL ON 12" O.C. TRUSSES.
IF BACKFILL HEIGHT IS GREATER THAN 6'-0" USE VERTICAL REINFORCEMENT AS SHOWN IN TABLE IF BRICK LEDGE HEIGHT IS UP TO 40" DEPTH OF SOIL BACKFILL HEIGHT LESS THAN 6'-0" PROVIDE VERTICAL WALL REINFORCEMENT * BRICK LEDGE 4" O.C. AS 8-0" O.C.

10" WIDE FOUNDATION WALL DETAIL
(W/ STONE VENEER) SCALE: 1/2"=1'-0"



WALL HEIGHT	60 PCF EQV. FLUID PRESSURE SOIL		45 PCF EQV. FLUID PRESSURE SOIL	
	MAXIMUM UNBAL'D FILL	VERTICAL REINFG	MAXIMUM UNBAL'D FILL	VERTICAL REINFG
9'-0"	5'-4"	NONE REQ'D	6'-4"	NONE REQ'D
	8'-0"	4 BARS @ 18" O.C. OR 5 BARS @ 16" O.C.	8'-0"	4 BARS @ 18" O.C. OR 5 BARS @ 16" O.C.

8" WIDE FOUNDATION WALL DETAIL
(9'-0" WALL HEIGHT, W/ SIDING) SCALE: 1/2"=1'-0"

1 WALL SECTION • WALK-OUT CONDITION
(8" OR 10" CONC. FOUNDATION WALL) SCALE: 3/4"=1'-0"

2 WALL SECTION • BURIED CONDITION
(8", 10", OR 12" CONC. FOUNDATION WALL) SCALE: 3/4"=1'-0"

3 10" WALL SECTION • BURIED CONDITION
(W/ MASONRY SUPPORT LEDGE) SCALE: 3/4"=1'-0"

Date
September 09, 2020

Revisions

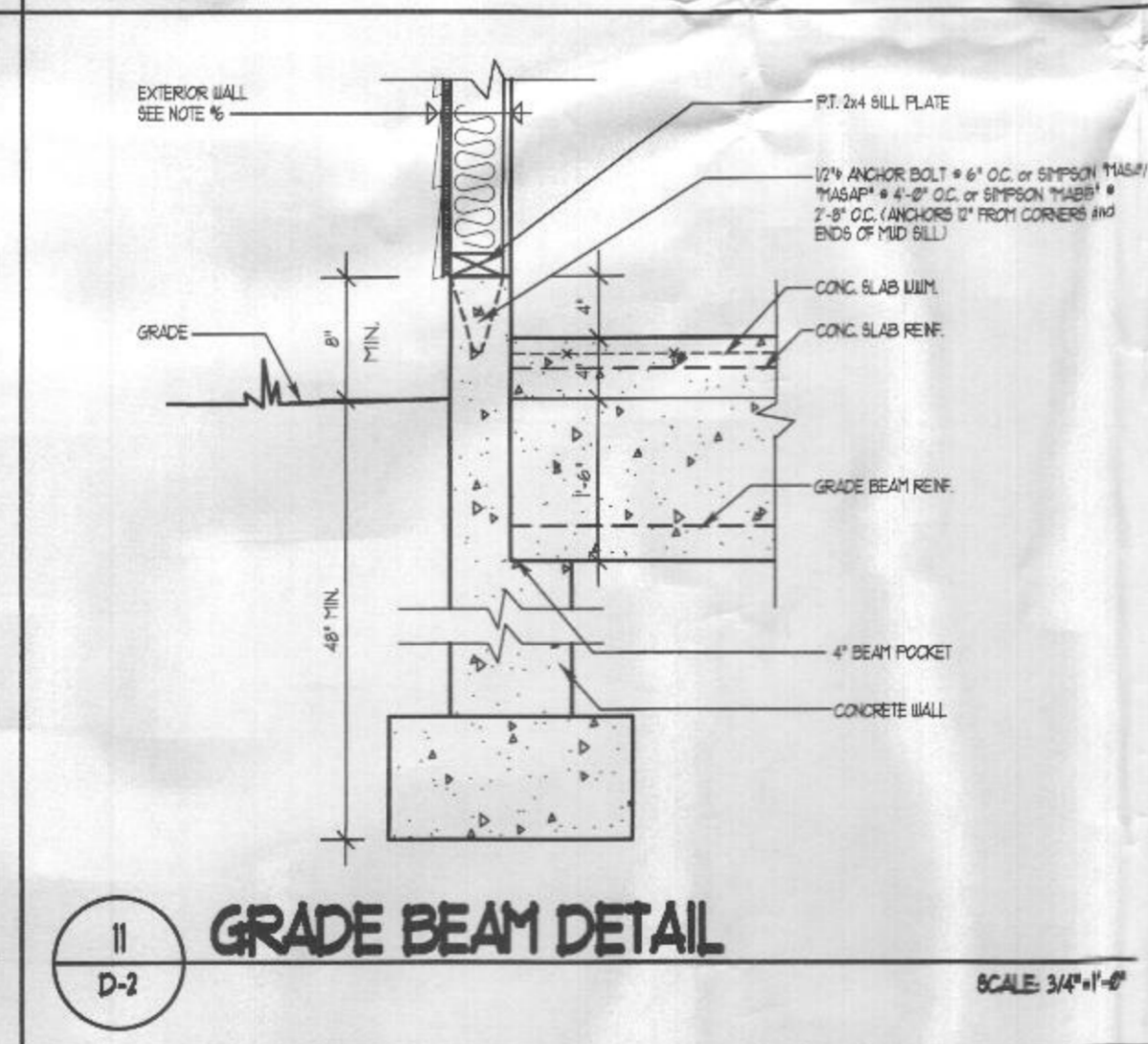
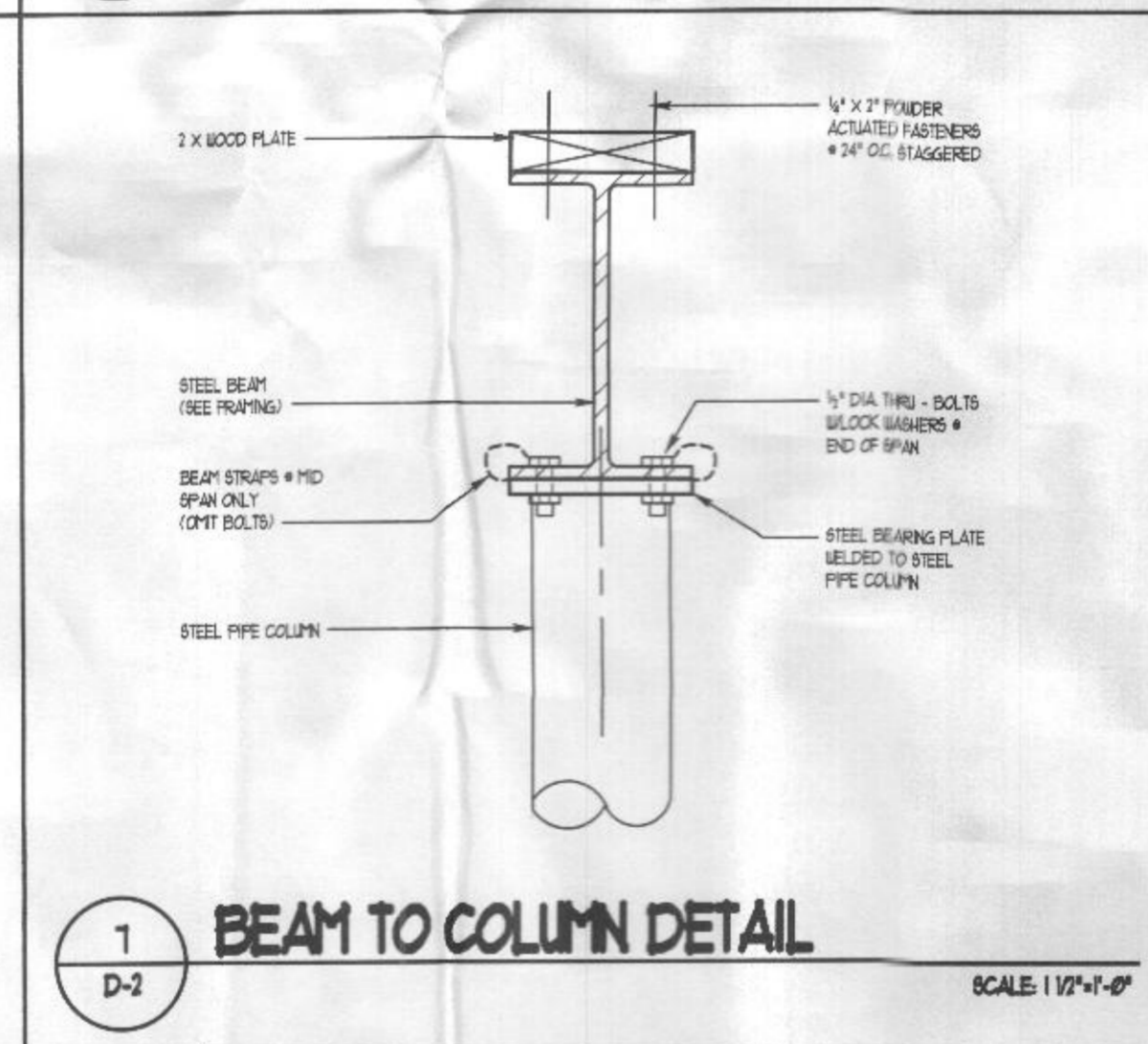
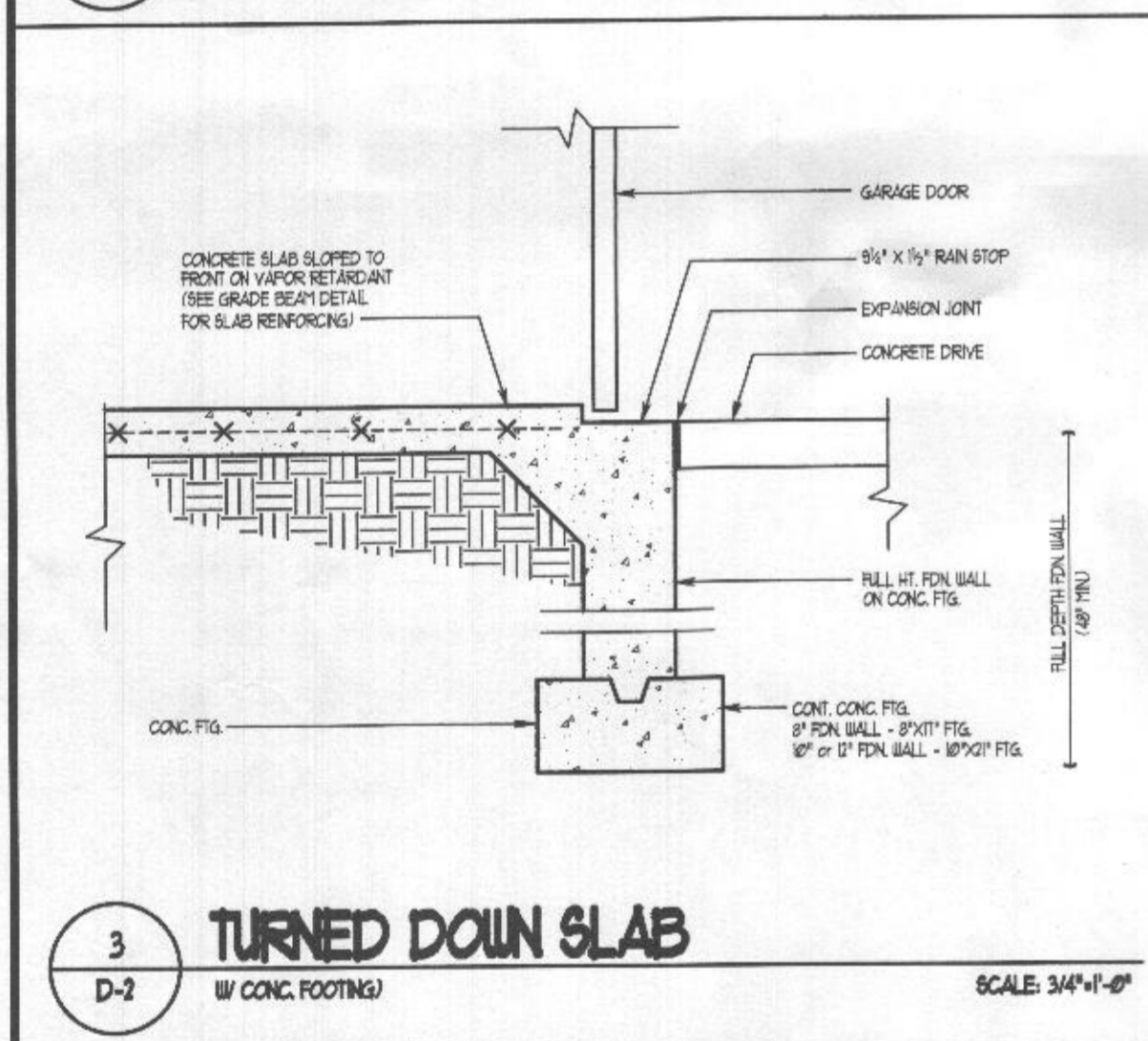
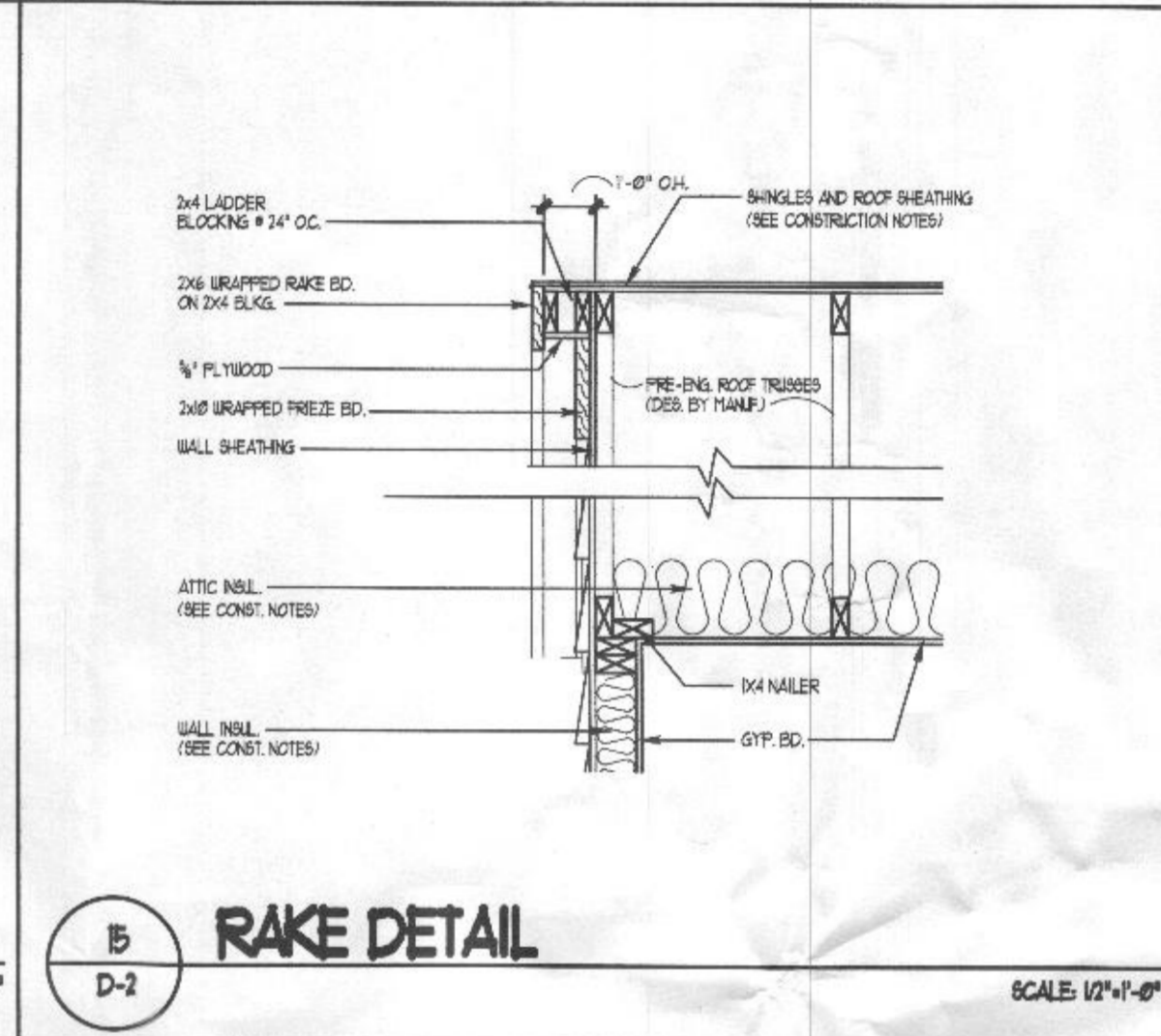
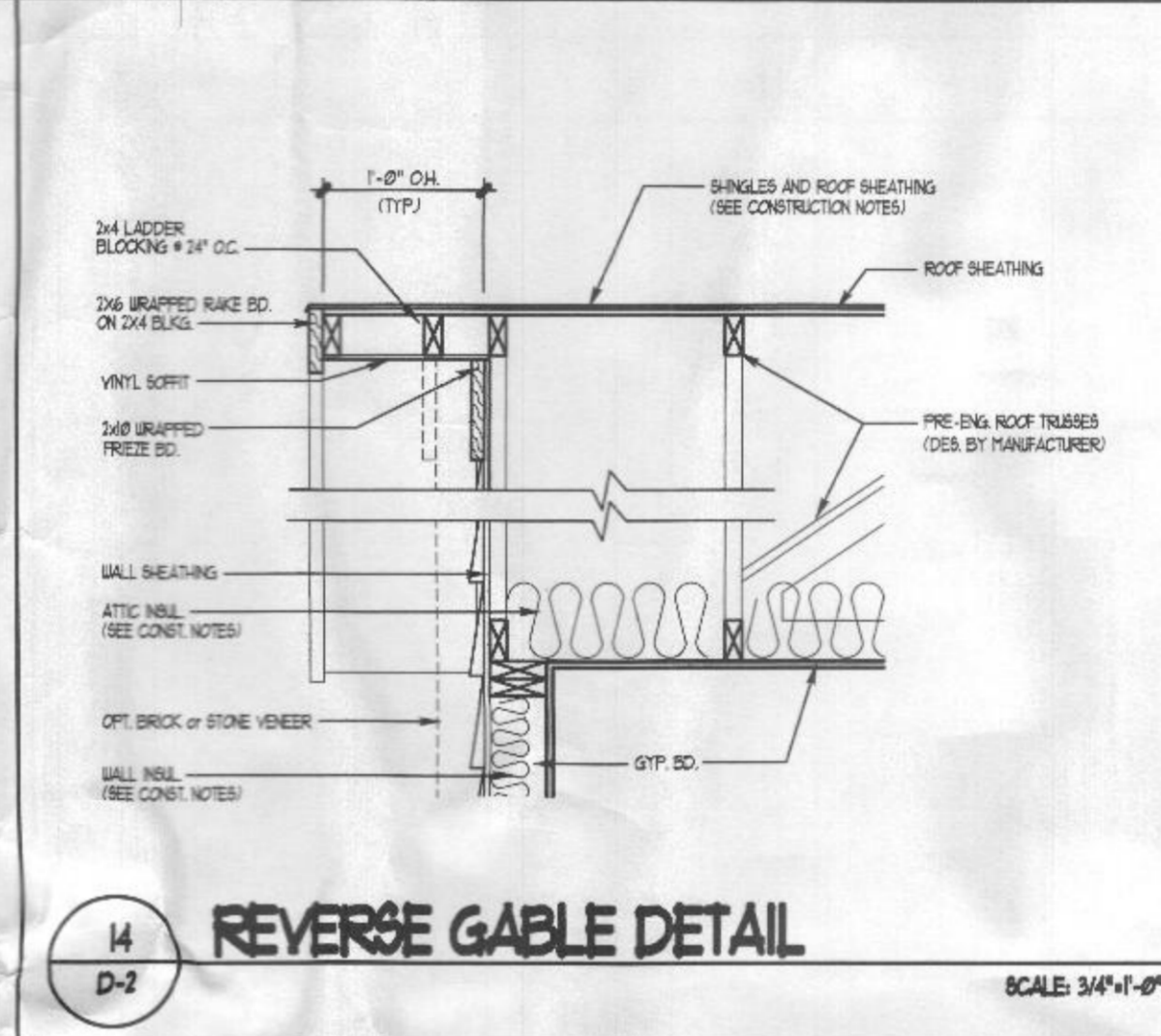
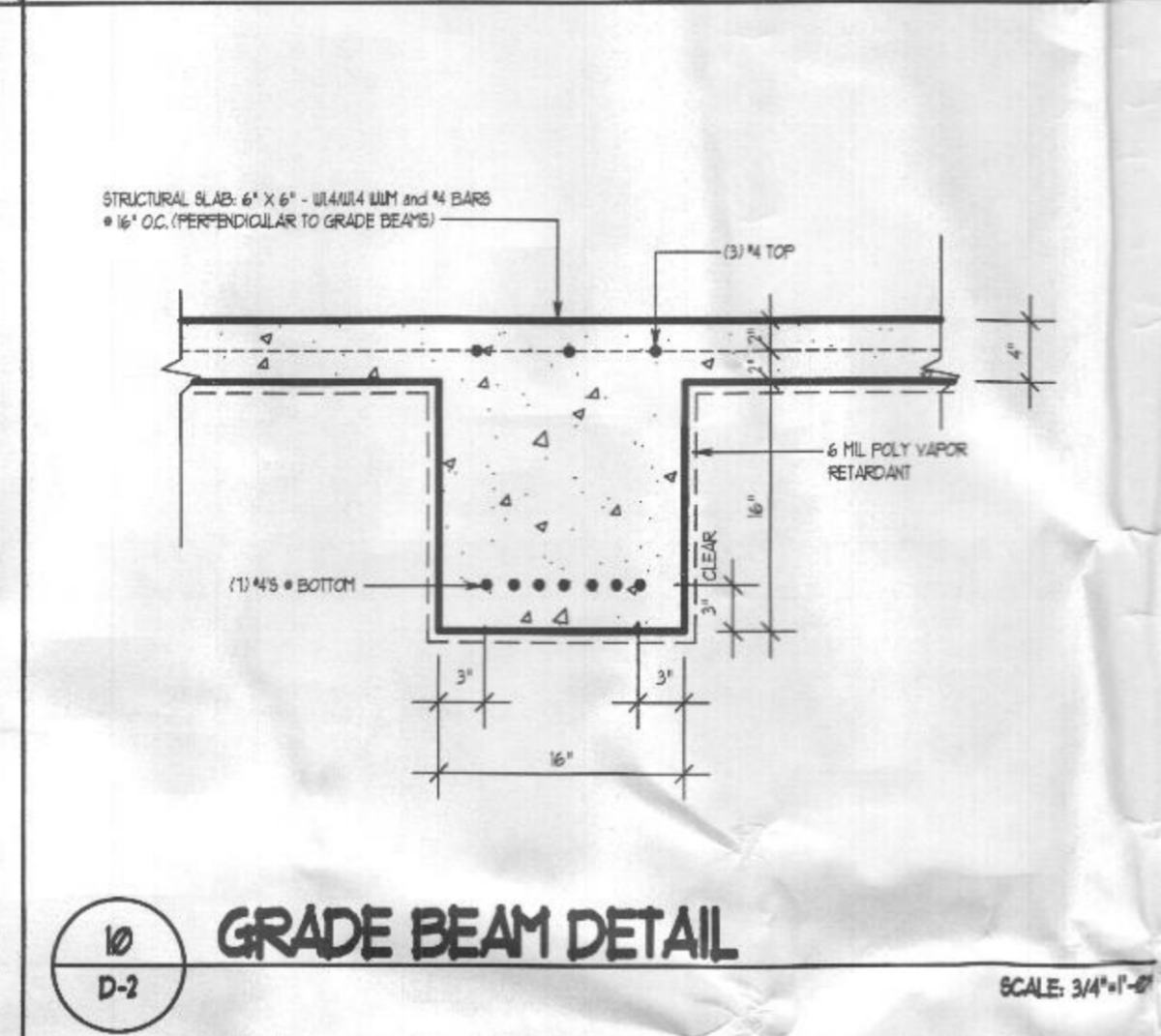
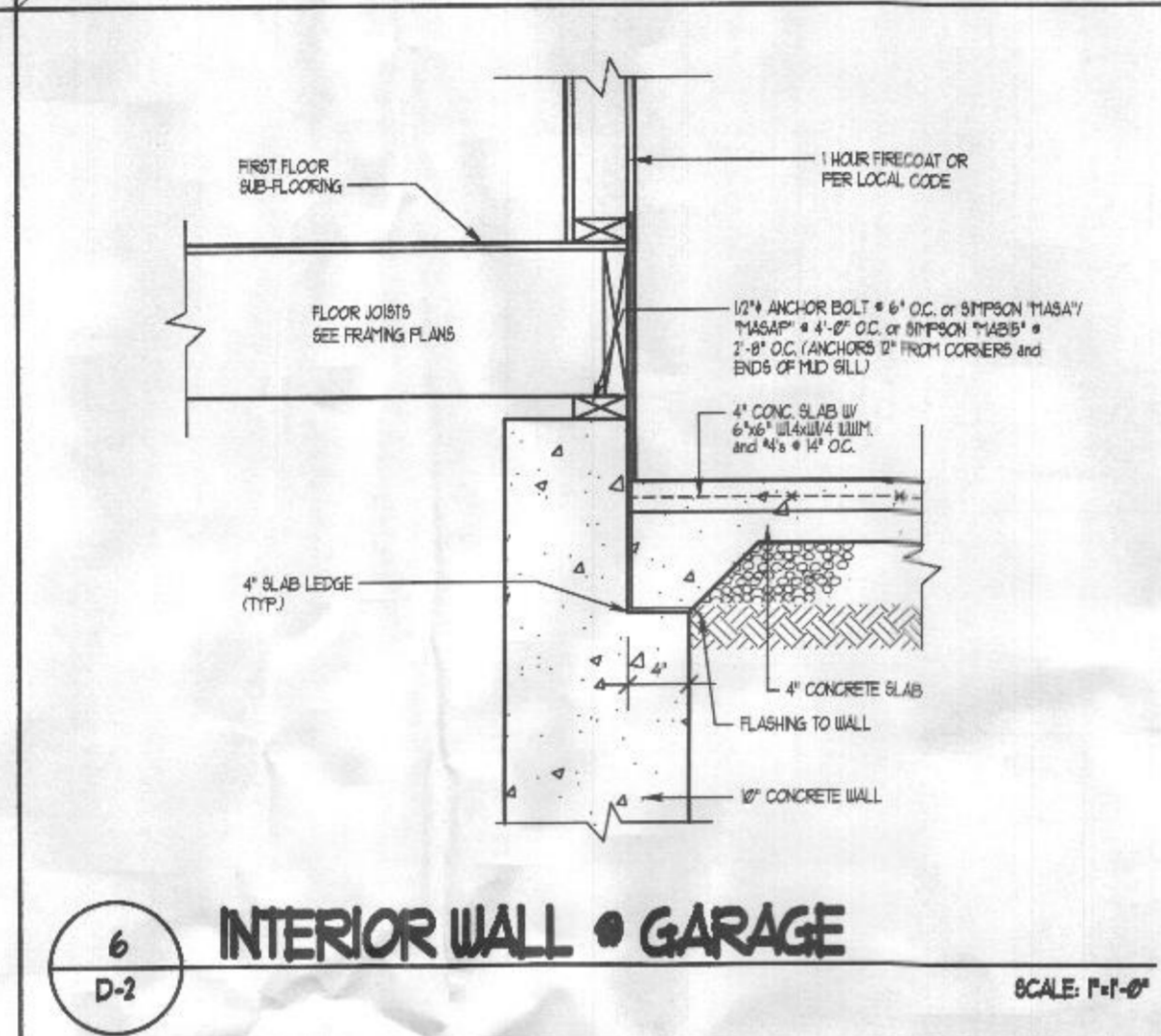
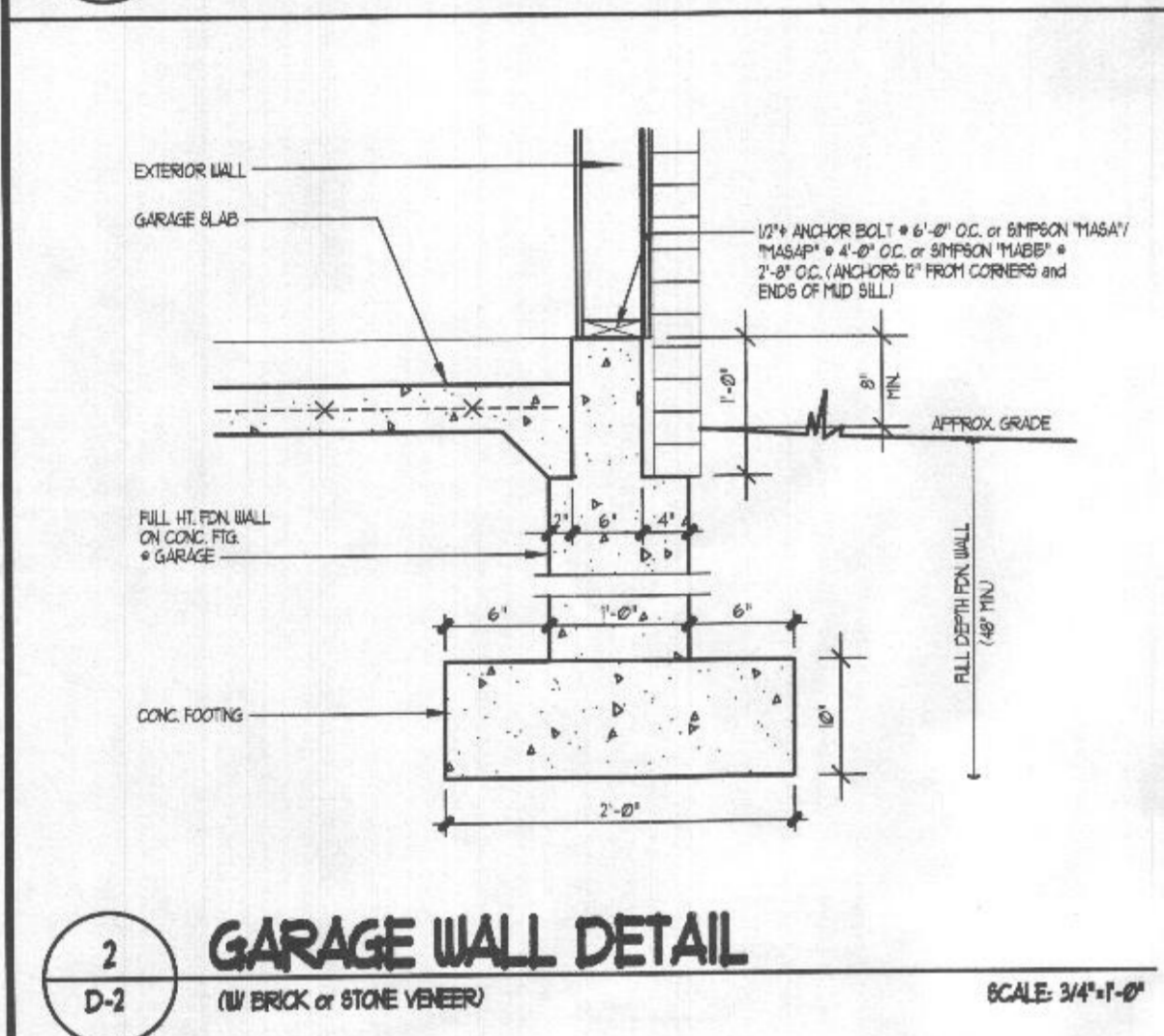
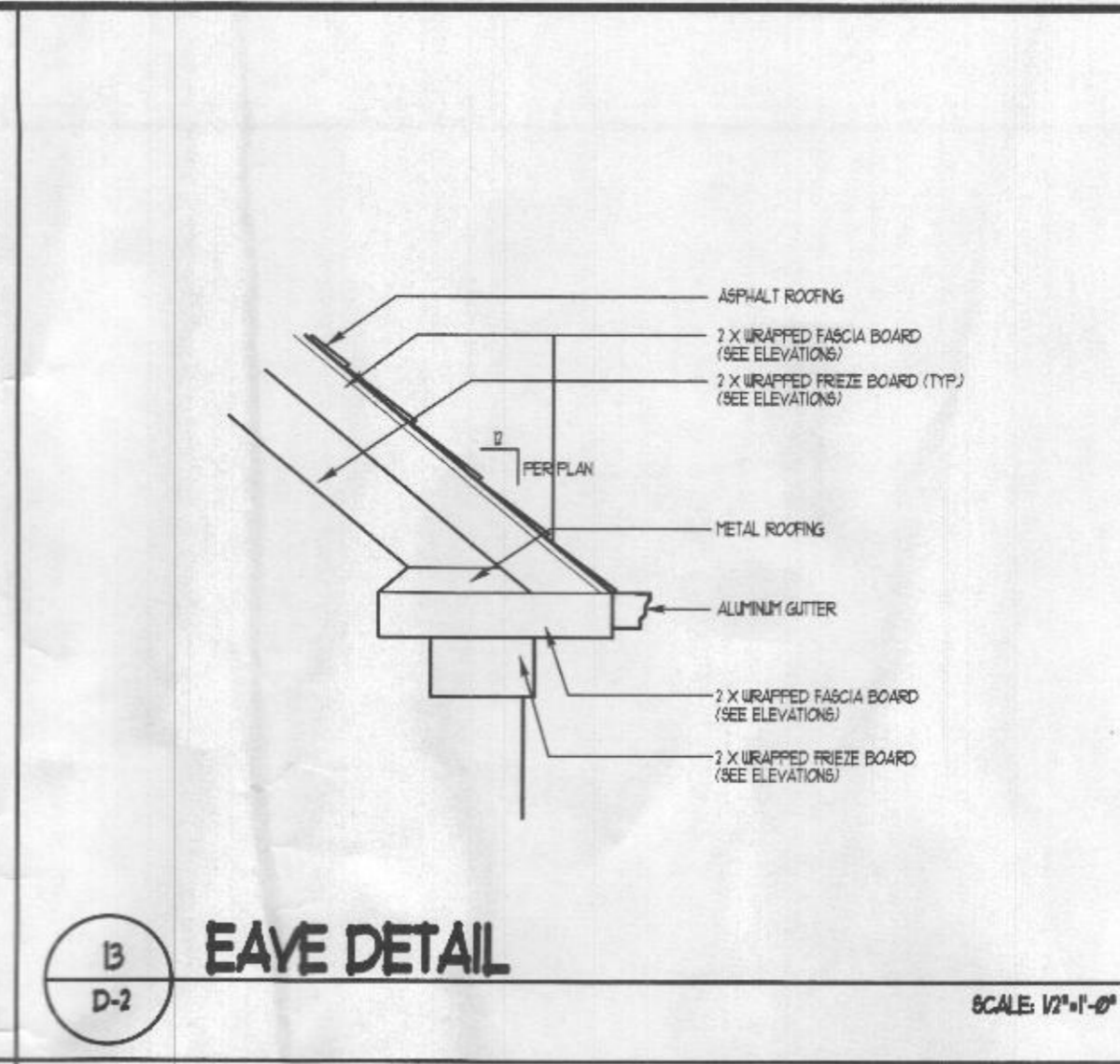
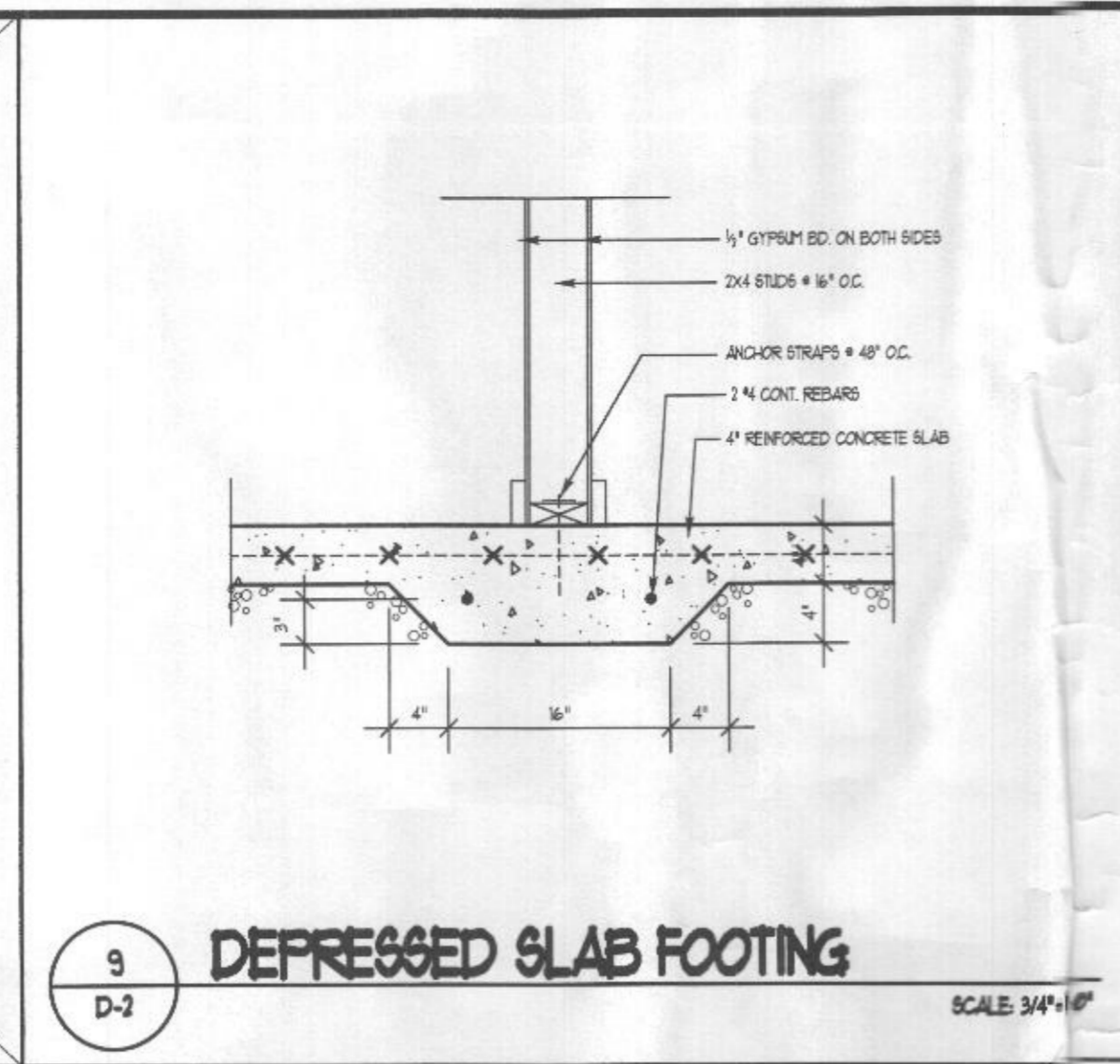
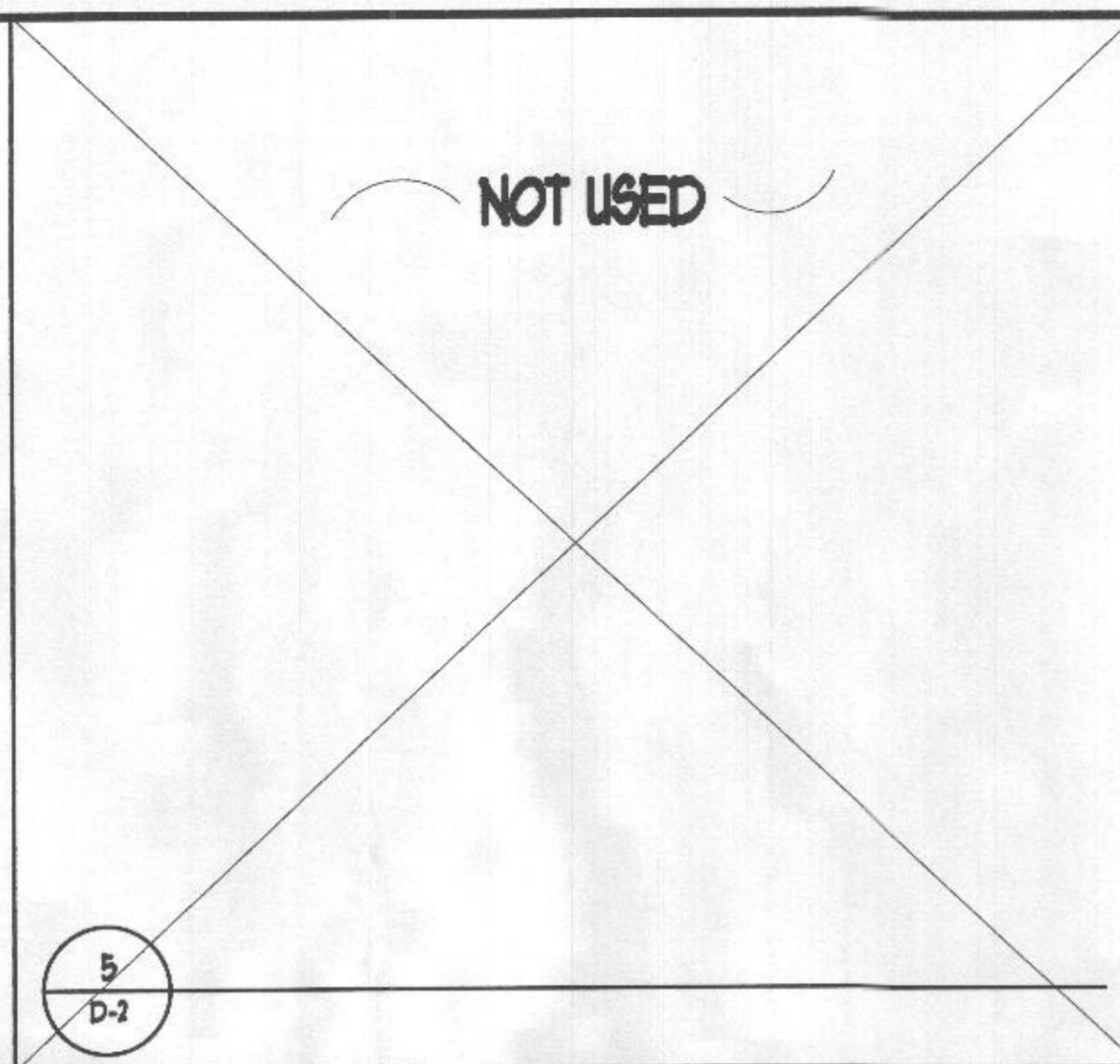
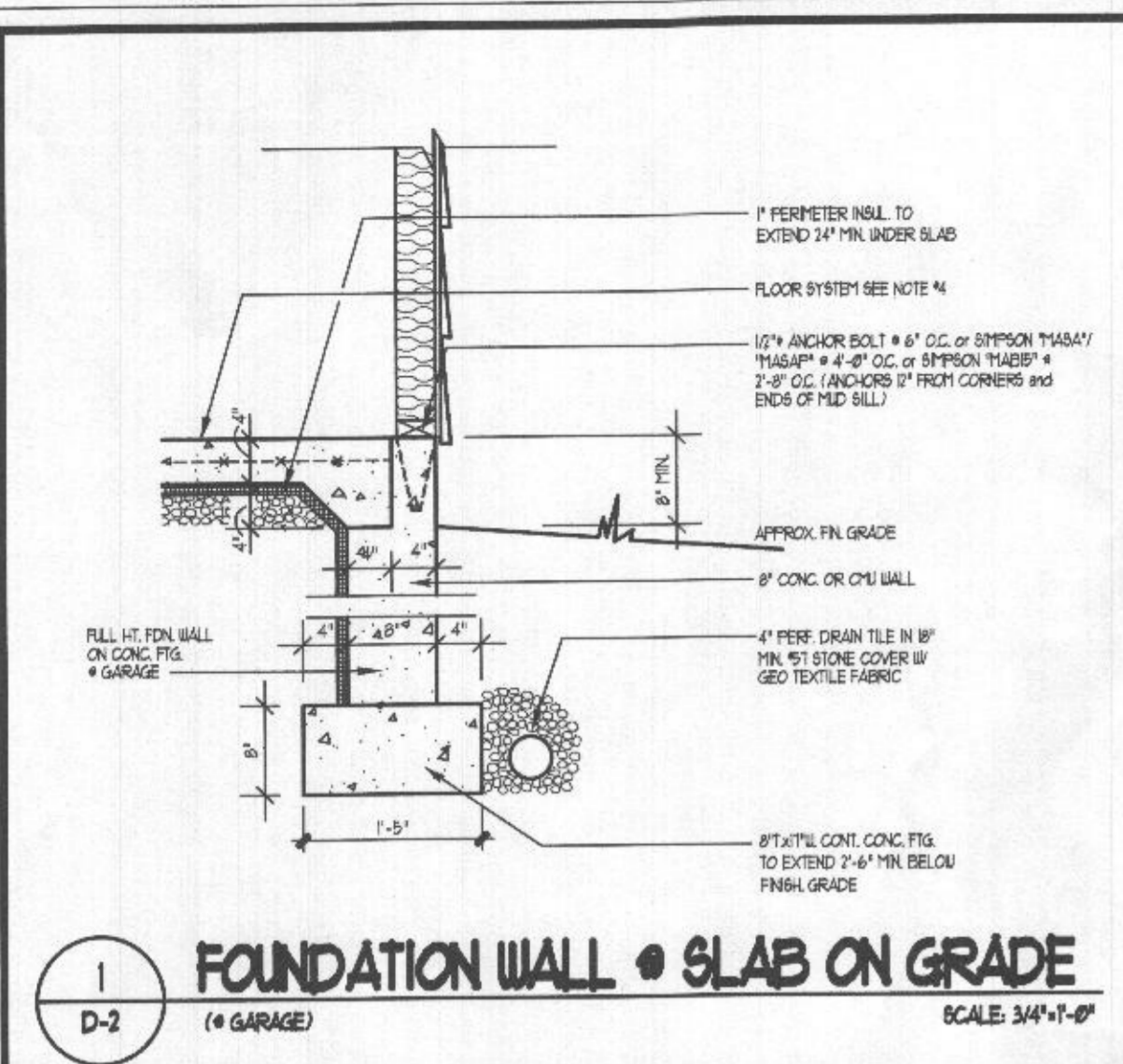
Product Name
JMB Homes
The Schiner-Rogers Residence

Sheet Title
Details

CSE Designs, Inc.
7371 Atlas Walk Way,
Suite 110,
Gainesville, Virginia 20155
Ph: 703-969-2676
Fax: 703-754-9317



Drawing No.
D-1



WOOD NAIL ANCHOR TO BM W/ 1/2" THICK BOLTS 30" OC STAGGER

ROOF ABOVE ROOM

SOLID WOOD WEB BALK W/ 1/2" THICK BOLT TOP & BOTTOM STAGGER @ 30" OC

NOTE "S" - PROVIDE SIMPSON "CS20" NAIL STRAP HORIZ TOP & BOTTOM X 48" L (BOTH SIDES)

2ND FLOOR FRAMG

HANGERS W/ 2x40

STPL PIPE COL'N

SP = 42.5
W/ 2x 40 @ 8'
Ip = 310
Δv = 0.252
Dv = 0.170

WF BM & COL'N

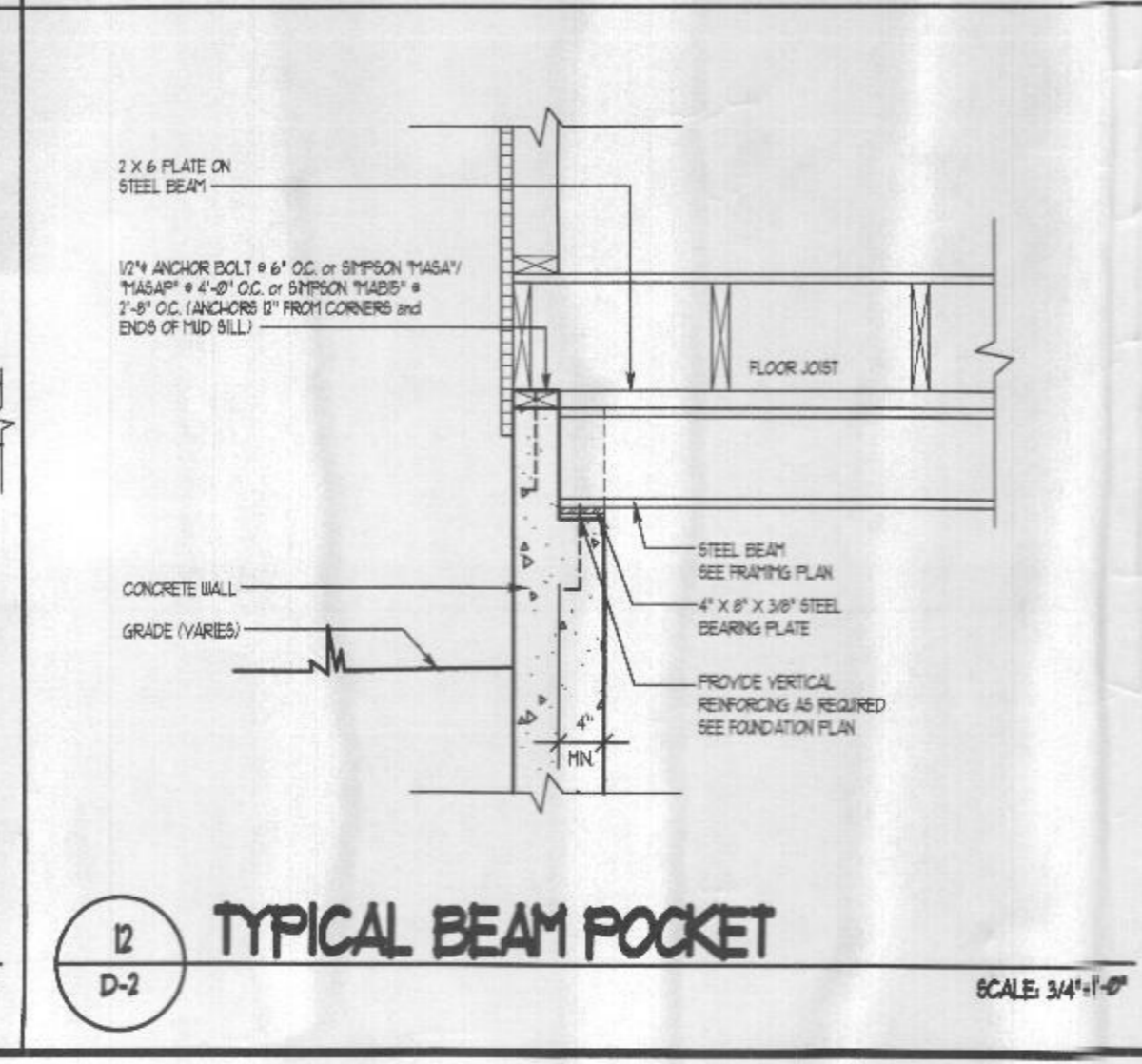
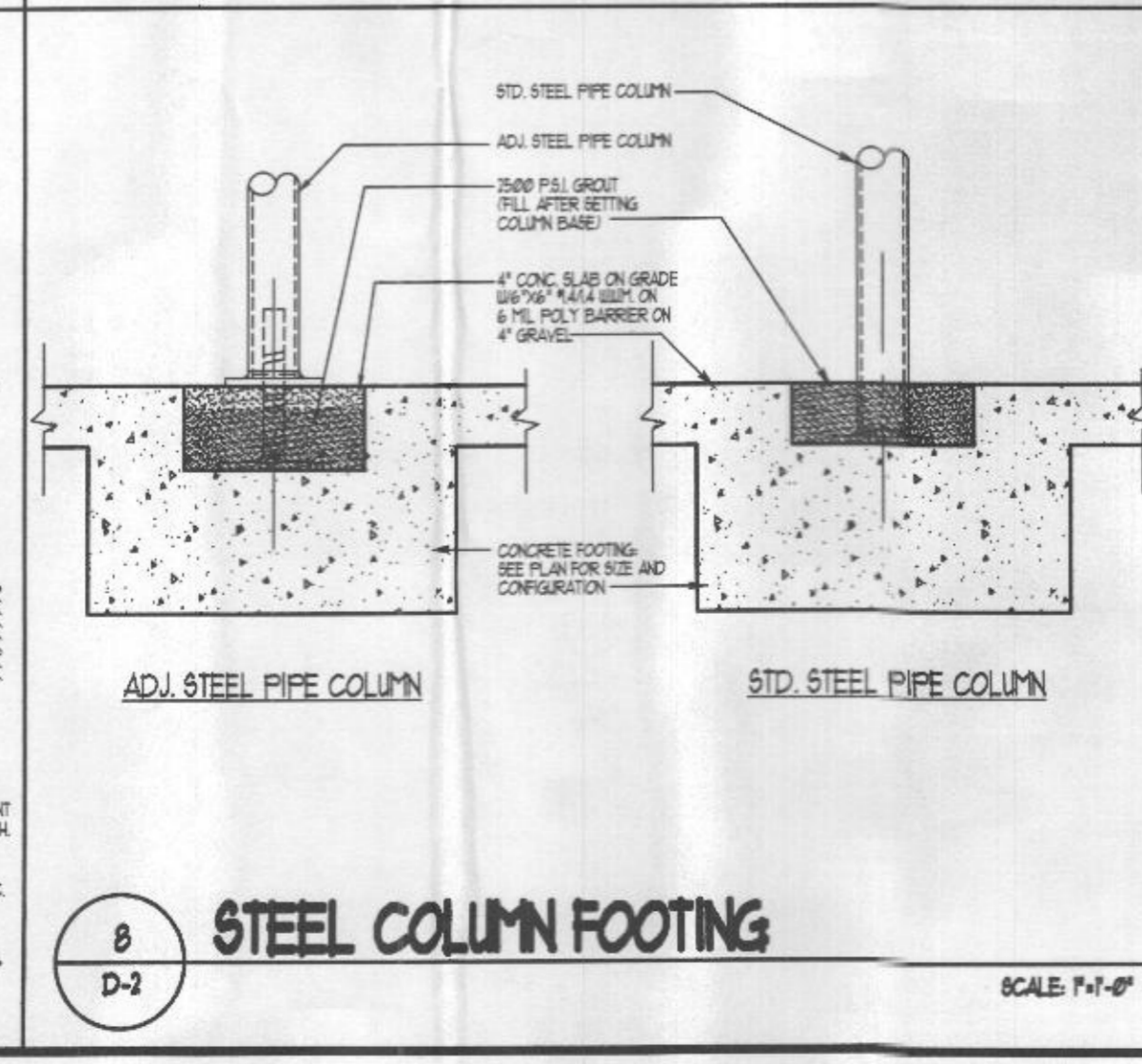
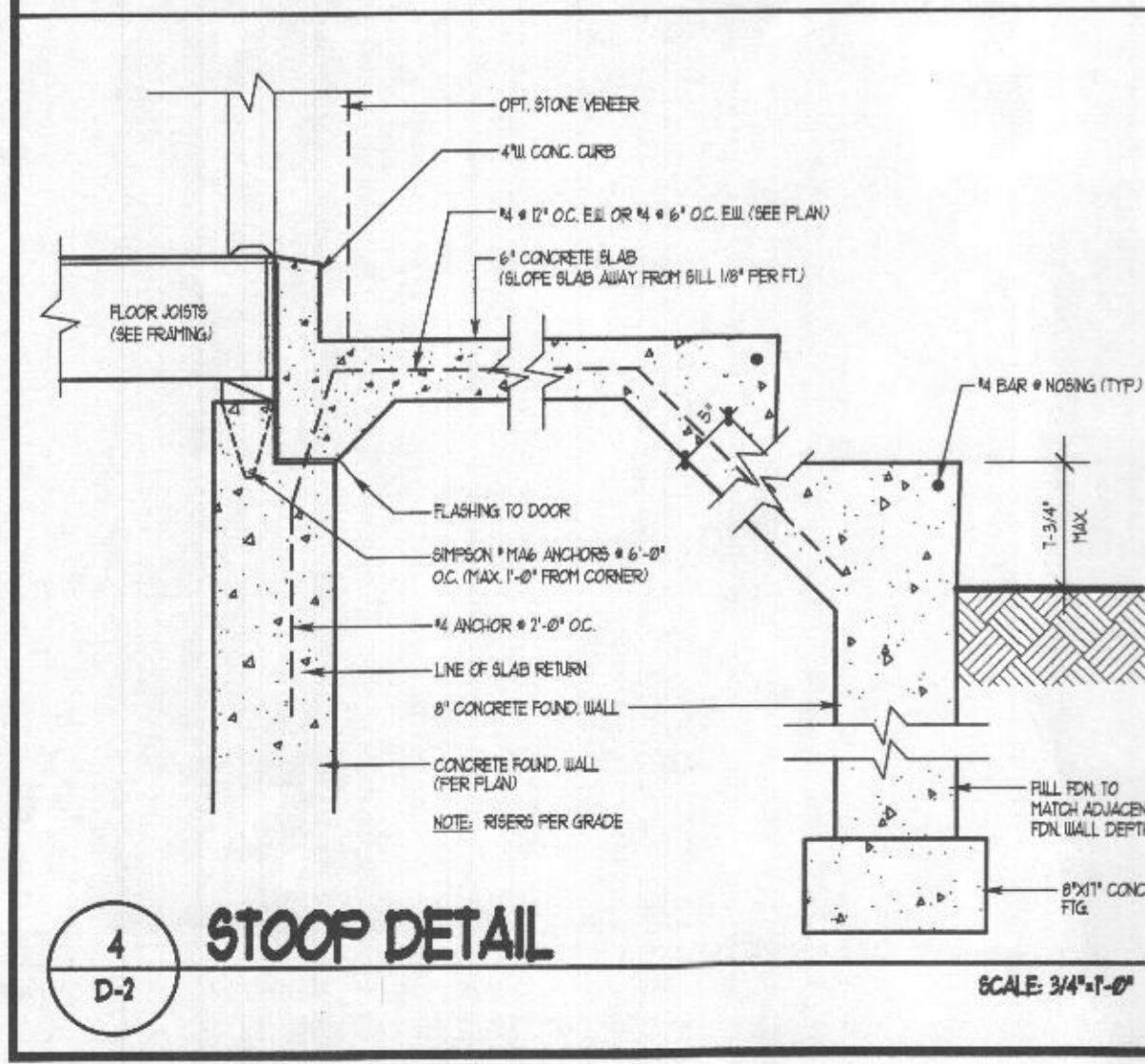
RKC Engineering
P.O. BOX 1015, GAINESVILLE, VA 20156 • 703-753-9207

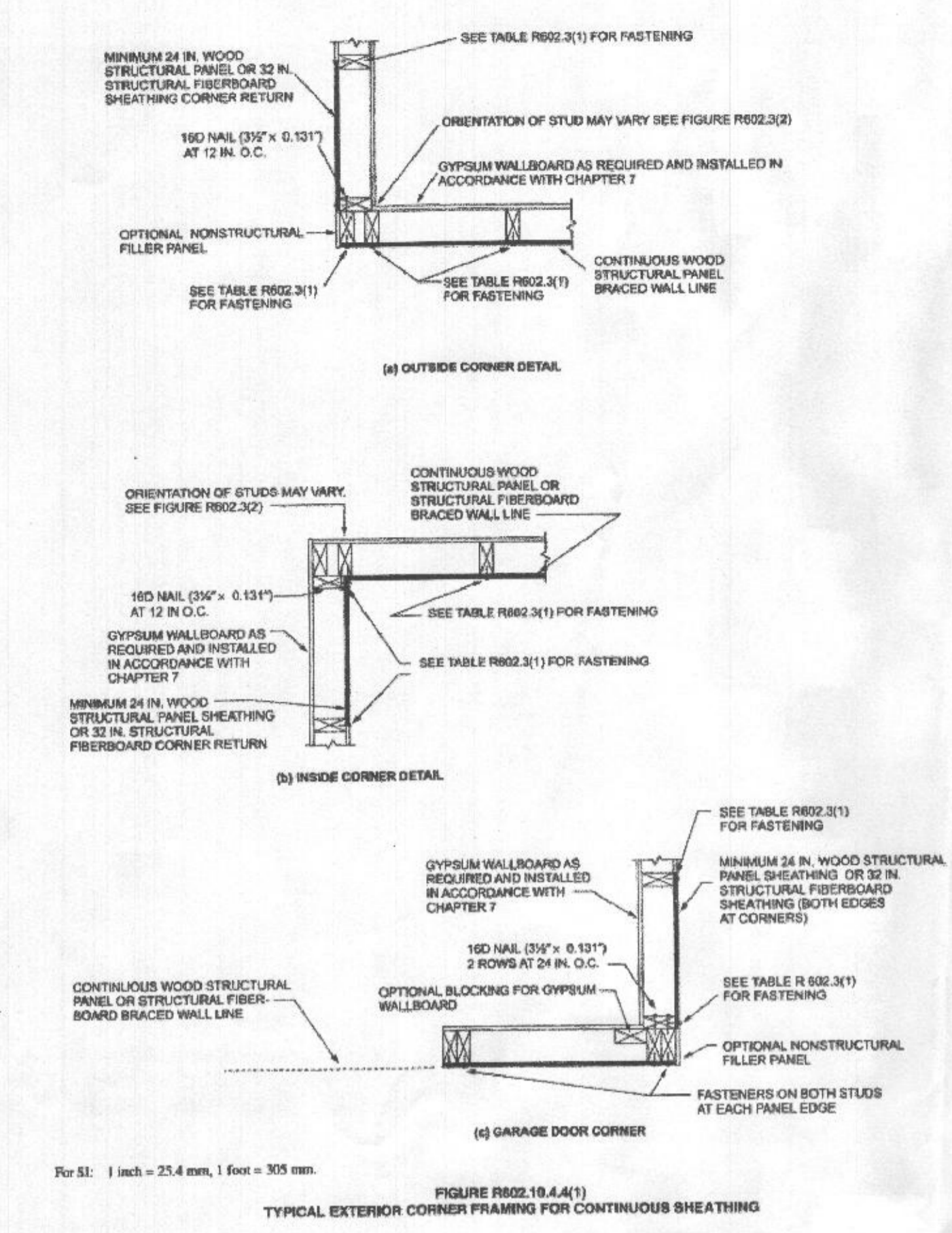
Job Name: SECTION A-A
Job Title: of

Date: Computed: Page: of

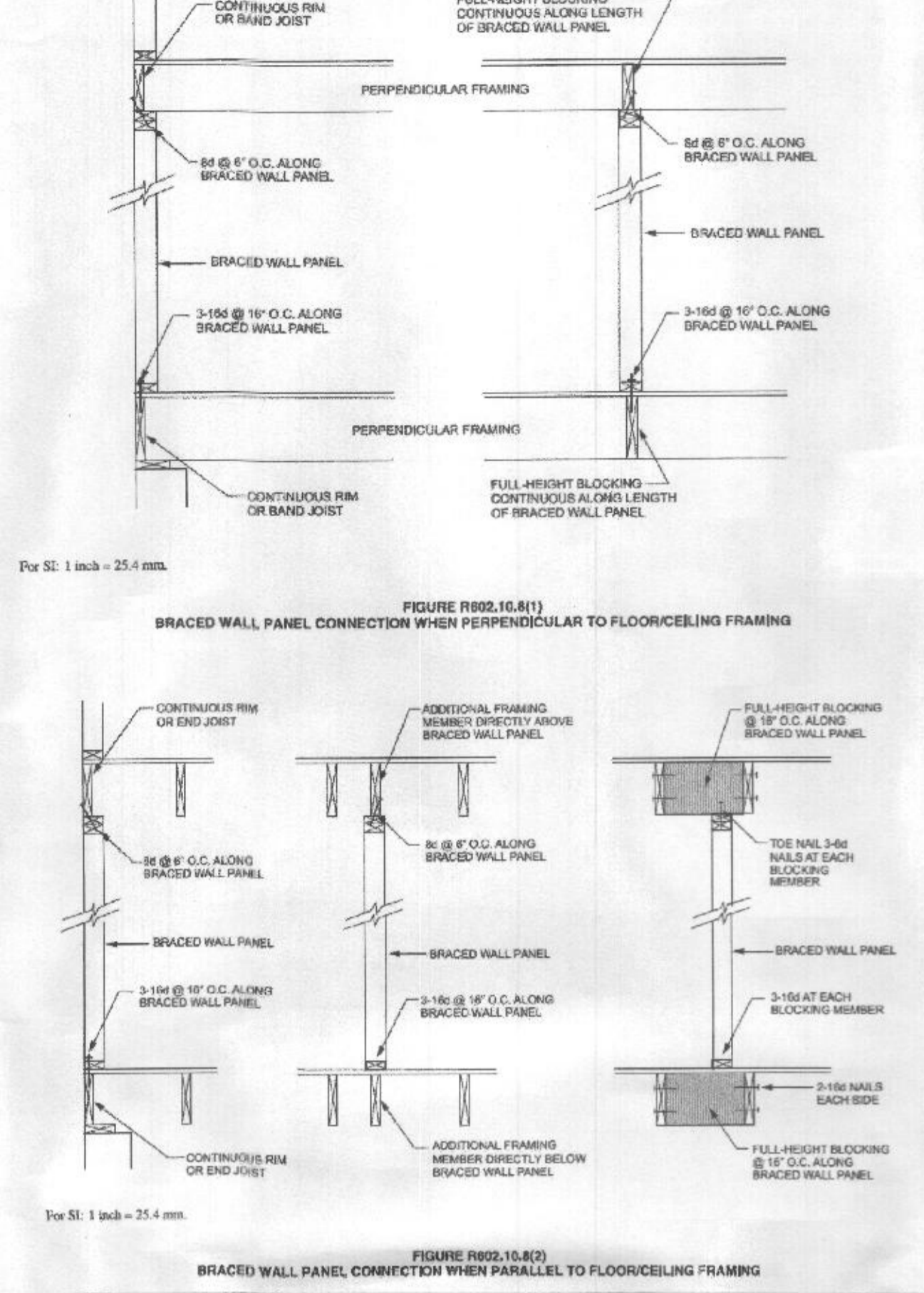
SECTION A-A
(FLUSH BEAM IN KITCHEN / MORNING ROOM) SCALE: NTA

16 BEAM DETAIL
SCALE: NTA

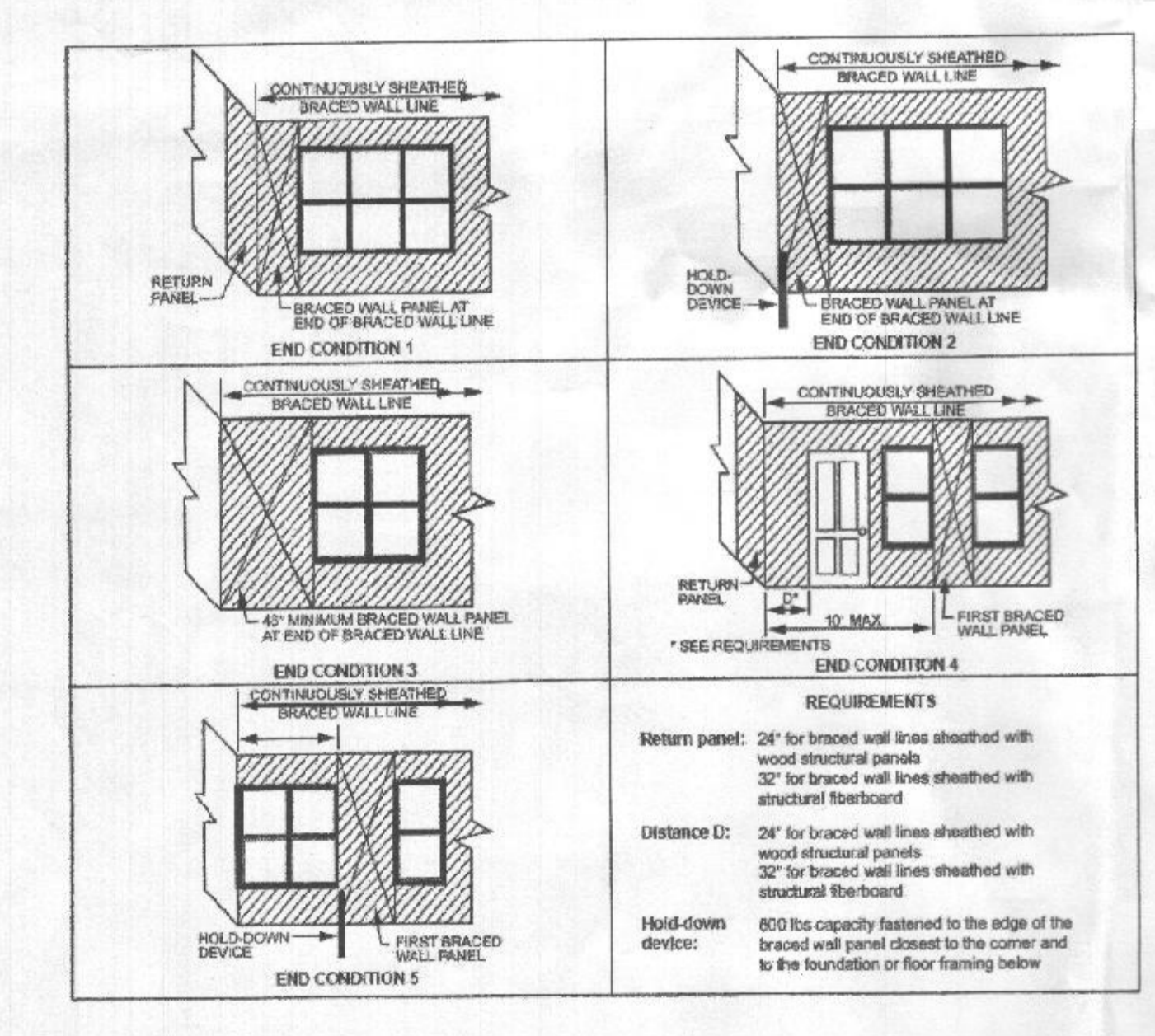




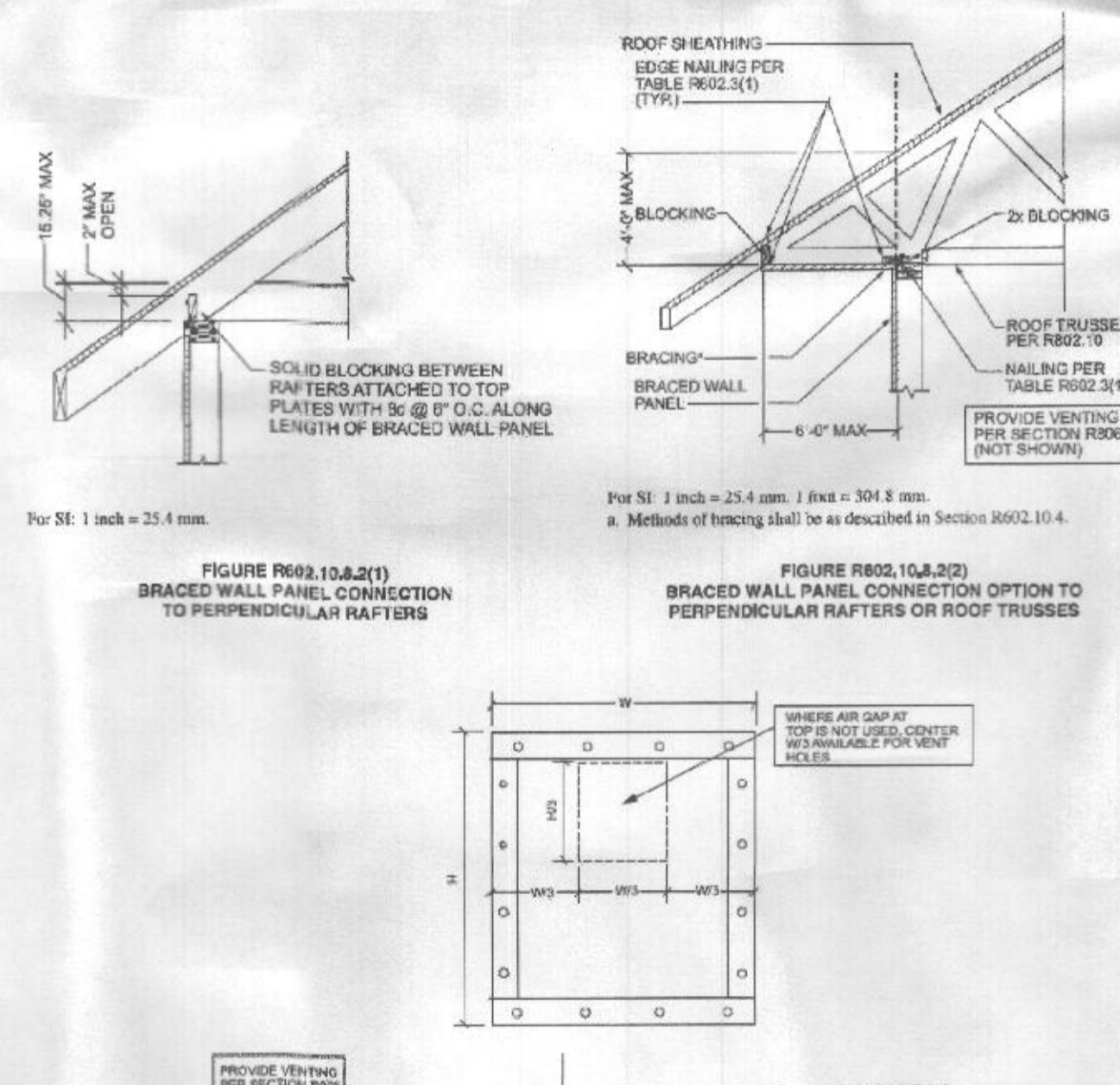
1 **TYP. EXTERIOR CORNER FRAMING FOR CONT. SHEATHING**
 NO SCALE



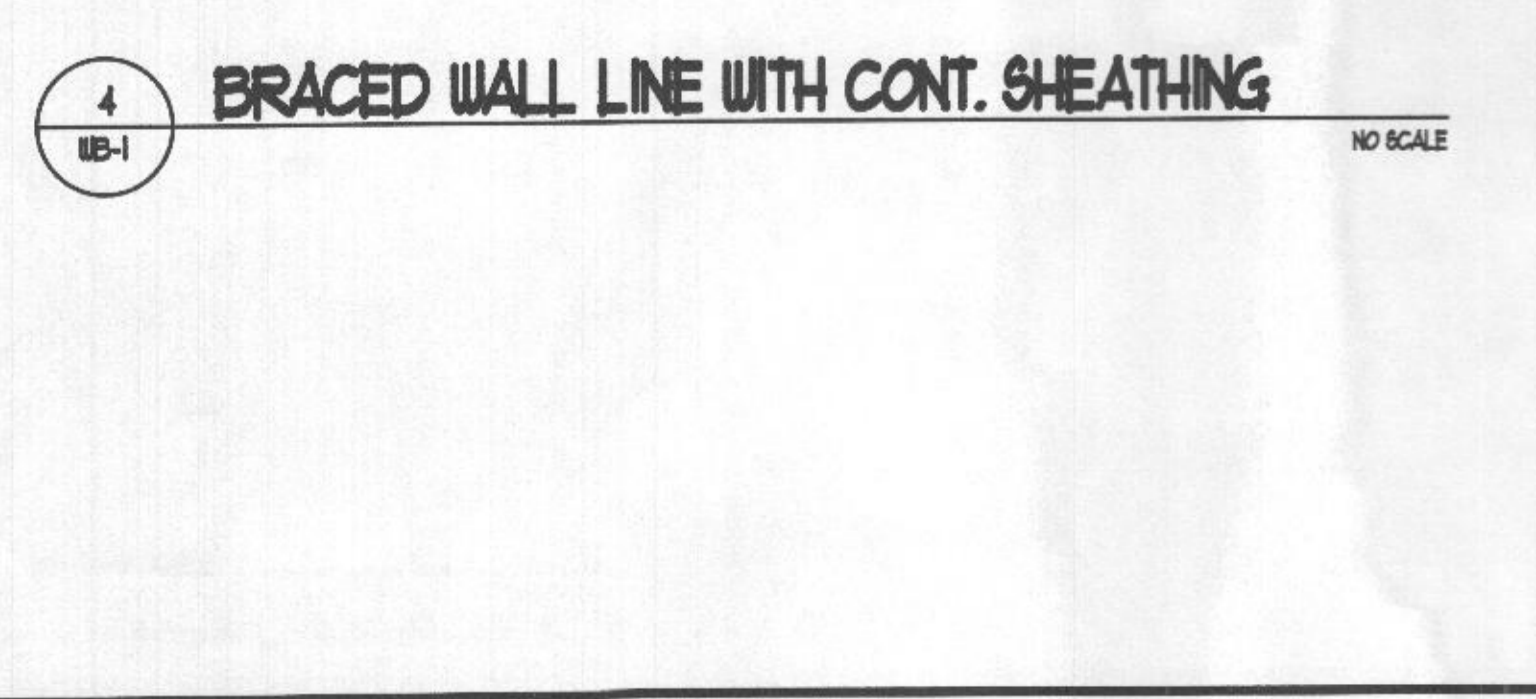
2 **BRACED WALL PANEL CONNECTION DETAILS**
 NO SCALE



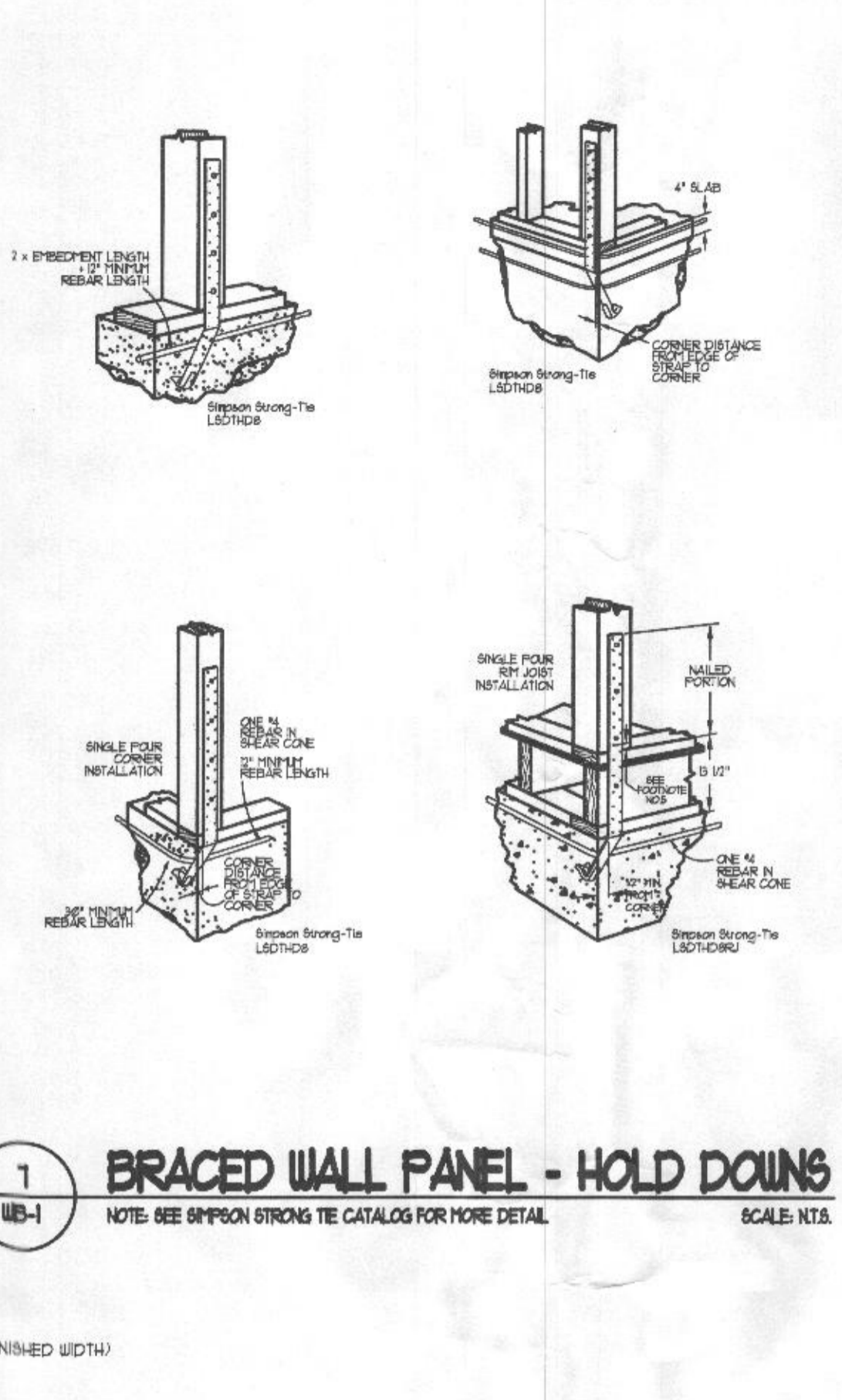
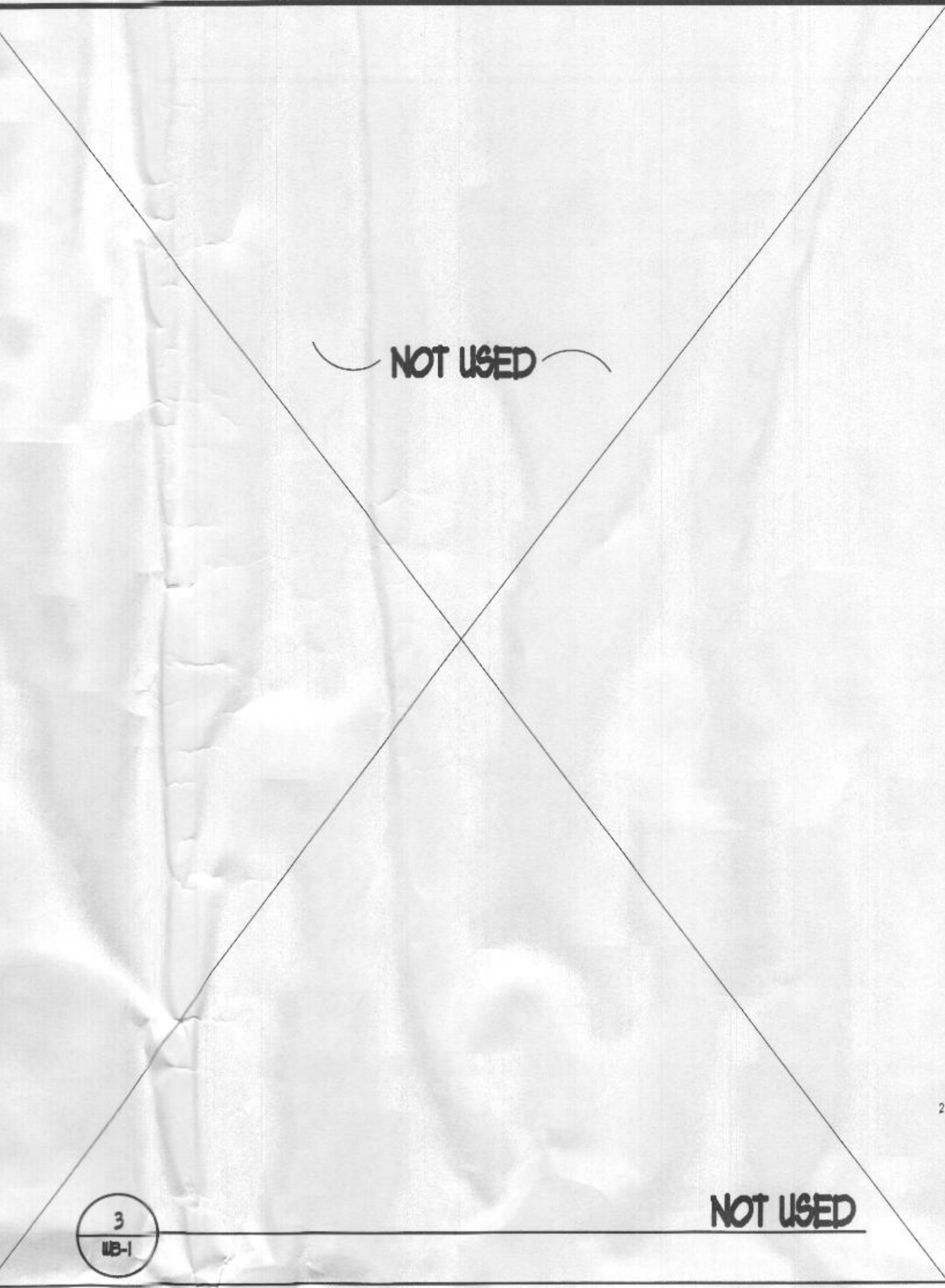
4 **BRACED WALL LINE WITH CONT. SHEATHING**
 NO SCALE



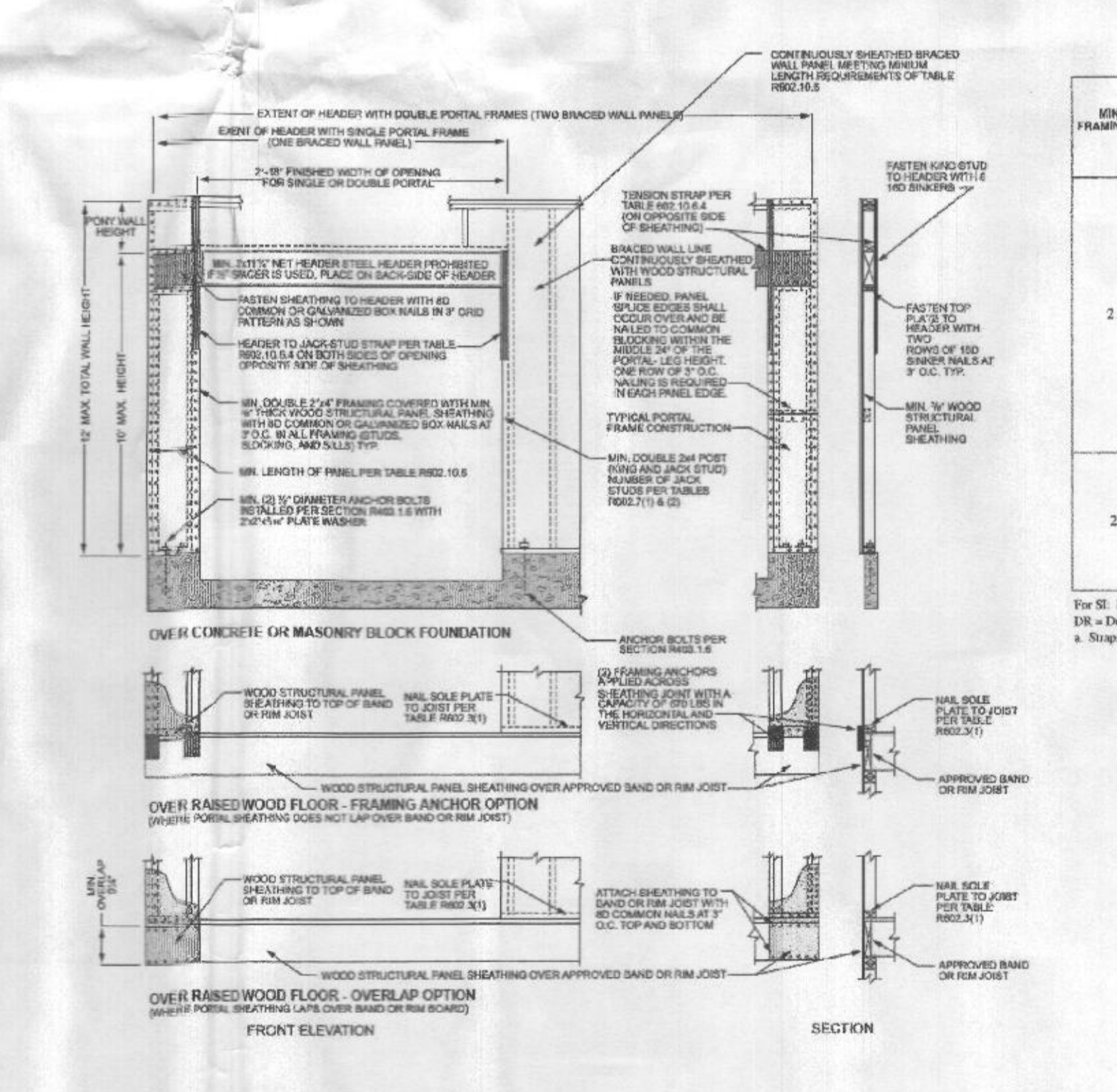
5 **BRACED WALL CONNECTION OPTION TO PERPENDICULAR RAFTERS OR ROOF TRUSS**
 NO SCALE



6 **CS-PF (CONTINUOUS SHEATHED PORTAL FRAME)**
 SCALE NTS



1 **BRACED WALL PANEL - HOLD DOWNS**
 NO SCALE



6 **CS-PF (CONTINUOUS SHEATHED PORTAL FRAME)**
 SCALE NTS

Revisions

Product Name
JMB Homes
The Schiner-Rogers Residence

Sheet Title
Framing Plans

Sheet Title
Framing Plans

CSE Designs, Inc.
7371 Atlas Walk Way,
Suite 110
Galax, VA 24541
Ph: 703-969-2879
Fax: 703-754-9317



Drawing No.
FOR REVIEW OF STATE DRAWINGS ONLY

GENERAL NOTES

- TRUSSES NOT DESIGNED TO SUPPORT BRICK
- TRUSSES 24" O.C. UNLESS OTHERWISE NOTED
- ALL HANGERS TO BE SIMPSON OR EQUAL
- DIMENSIONS ARE IN FEET - INCHES - SIXTEENTHS

HARDWARE QTY

HTU26	150
HTU26	51
LJ13-SUS	1
LJ13SUS	90
LJ26	7

All Hangers are HTU26, Unless Noted Otherwise

Per ANSI/TPI All "Truss To Wall" Connections Are The Responsibility Of The Building Designer, Not The Truss Manufacturer.

VG LIME CEILING
FIELD FRAME

Builders FirstSource
Builders FirstSource Northeast Region 2
www.bfsr.com

ENGR BY: STB
DATE: 6/10/20
REV: 1
SCALE: 1/8" = 1'-0"

JMB Homes
Schiner Rogers Residence

Custom Per Plan
AW# 2423512

00-00-00 Comments:

ENGINEERED WOOD MATERIALS LIST

JMB HOMES
SCHINER-ROGERS RESIDENCE
SECOND FLOOR

PAIR	QTY	SP. LENGTH	DEPTH	SP. SPEC.
1	2	12'-0"	1 1/2"	20F
2	2	12'-0"	1 1/2"	20F
3	2	12'-0"	1 1/2"	20F
4	2	12'-0"	1 1/2"	20F
5	2	12'-0"	1 1/2"	20F
6	2	12'-0"	1 1/2"	20F
7	2	12'-0"	1 1/2"	20F
8	2	12'-0"	1 1/2"	20F
9	2	12'-0"	1 1/2"	20F
10	2	12'-0"	1 1/2"	20F
11	2	12'-0"	1 1/2"	20F
12	2	12'-0"	1 1/2"	20F
13	2	12'-0"	1 1/2"	20F
14	2	12'-0"	1 1/2"	20F
15	2	12'-0"	1 1/2"	20F
16	2	12'-0"	1 1/2"	20F
17	2	12'-0"	1 1/2"	20F
18	2	12'-0"	1 1/2"	20F
19	2	12'-0"	1 1/2"	20F
20	2	12'-0"	1 1/2"	20F
21	2	12'-0"	1 1/2"	20F
22	2	12'-0"	1 1/2"	20F
23	2	12'-0"	1 1/2"	20F
24	2	12'-0"	1 1/2"	20F
25	2	12'-0"	1 1/2"	20F
26	2	12'-0"	1 1/2"	20F
27	2	12'-0"	1 1/2"	20F
28	2	12'-0"	1 1/2"	20F
29	2	12'-0"	1 1/2"	20F
30	2	12'-0"	1 1/2"	20F
31	2	12'-0"	1 1/2"	20F
32	2	12'-0"	1 1/2"	20F
33	2	12'-0"	1 1/2"	20F
34	2	12'-0"	1 1/2"	20F
35	2	12'-0"	1 1/2"	20F
36	2	12'-0"	1 1/2"	20F
37	2	12'-0"	1 1/2"	20F
38	2	12'-0"	1 1/2"	20F
39	2	12'-0"	1 1/2"	20F
40	2	12'-0"	1 1/2"	20F
41	2	12'-0"	1 1/2"	20F
42	2	12'-0"	1 1/2"	20F
43	2	12'-0"	1 1/2"	20F
44	2	12'-0"	1 1/2"	20F
45	2	12'-0"	1 1/2"	20F
46	2	12'-0"	1 1/2"	20F
47	2	12'-0"	1 1/2"	20F
48	2	12'-0"	1 1/2"	20F
49	2	12'-0"	1 1/2"	20F
50	2	12'-0"	1 1/2"	20F
51	2	12'-0"	1 1/2"	20F
52	2	12'-0"	1 1/2"	20F
53	2	12'-0"	1 1/2"	20F
54	2	12'-0"	1 1/2"	20F
55	2	12'-0"	1 1/2"	20F
56	2	12'-0"	1 1/2"	20F
57	2	12'-0"	1 1/2"	20F
58	2	12'-0"	1 1/2"	20F
59	2	12'-0"	1 1/2"	20F
60	2	12'-0"	1 1/2"	20F
61	2	12'-0"	1 1/2"	20F
62	2	12'-0"	1 1/2"	20F
63	2	12'-0"	1 1/2"	20F
64	2	12'-0"	1 1/2"	20F
65	2	12'-0"	1 1/2"	20F
66	2	12'-0"	1 1/2"	20F
67	2	12'-0"	1 1/2"	20F
68	2	12'-0"	1 1/2"	20F
69	2	12'-0"	1 1/2"	20F
70	2	12'-0"	1 1/2"	20F
71	2	12'-0"	1 1/2"	20F
72	2	12'-0"	1 1/2"	20F
73	2	12'-0"	1 1/2"	20F
74	2	12'-0"	1 1/2"	20F
75	2	12'-0"	1 1/2"	20F
76	2	12'-0"	1 1/2"	20F
77	2	12'-0"	1 1/2"	20F
78	2	12'-0"	1 1/2"	20F
79	2	12'-0"	1 1/2"	20F
80	2	12'-0"	1 1/2"	20F
81	2	12'-0"	1 1/2"	20F
82	2	12'-0"	1 1/2"	20F
83	2	12'-0"	1 1/2"	20F
84	2	12'-0"	1 1/2"	20F
85	2	12'-0"	1 1/2"	20F
86	2	12'-0"	1 1/2"	20F
87	2	12'-0"	1 1/2"	20F
88	2	12'-0"	1 1/2"	20F
89	2	12'-0"	1 1/2"	20F
90	2	12'-0"	1 1/2"	20F
91	2	12'-0"	1 1/2"	20F
92	2	12'-0"	1 1/2"	20F
93	2	12'-0"	1 1/2"	20F
94	2	12'-0"	1 1/2"	20F
95	2	12'-0"	1 1/2"	20F
96	2	12'-0"	1 1/2"	20F
97	2	12'-0"	1 1/2"	20F
98	2	12'-0"	1 1/2"	20F
99	2	12'-0"	1 1/2"	20F
100	2	12'-0"	1 1/2"	20F

JOIST ACCESSORIES, HANGERS, RIM BOARD

PAIR	QTY	SP. LENGTH	DESCRIPTION
HTU26	150	12'-0"	1 1/2" HTU26 HANGER
LJ13-SUS	1	12'-0"	LJ13-SUS HANGER
LJ13SUS	90	12'-0"	LJ13SUS HANGER
LJ26	7	12'-0"	LJ26 HANGER
HTU26	150	12'-0"	1 1/2" HTU26 HANGER
LJ13-SUS	1	12'-0"	LJ13-SUS HANGER
LJ13SUS	90	12'-0"	LJ13SUS HANGER
LJ26	7	12'-0"	LJ26 HANGER
HTU26	150	12'-0"	1 1/2" HTU26 HANGER
LJ13-SUS	1	12'-0"	LJ13-SUS HANGER
LJ13SUS	90	12'-0"	LJ13SUS HANGER
LJ26	7	12'-0"	LJ26 HANGER
HTU26	150	12'-0"	1 1/2" HTU26 HANGER
LJ13-SUS	1	12'-0"	LJ13-SUS HANGER
LJ13SUS	90	12'-0"	LJ13SUS HANGER
LJ26	7	12'-0"	LJ26 HANGER
HTU26	150	12'-0"	1 1/2" HTU26 HANGER
LJ13-SUS	1	12'-0"	LJ13-SUS HANGER
LJ13SUS	90	12'-0"	LJ13SUS HANGER
LJ26	7	12'-0"	LJ26 HANGER
HTU26	150	12'-0"	1 1/2" HTU26 HANGER
LJ13-SUS	1	12'-0"	LJ13-SUS HANGER
LJ13SUS	90	12'-0"	LJ13SUS HANGER
LJ26	7	12'-0"	LJ26 HANGER
HTU26	150	12'-0"	1 1/2" HTU26 HANGER
LJ13-SUS	1	12'-0"	LJ13-SUS HANGER
LJ13SUS	90	12'-0"	LJ13SUS HANGER
LJ26	7	12'-0"	LJ26 HANGER
HTU26	150	12'-0"	1 1/2" HTU26 HANGER
LJ13-SUS	1	12'-0"	LJ13-SUS HANGER
LJ13SUS	90	12'-0"	LJ13SUS HANGER
LJ26	7	12'-0"	LJ26 HANGER
HTU26	150	12'-0"	1 1/2" HTU26 HANGER
LJ13-SUS	1	12'-0"	LJ13-SUS HANGER
LJ13SUS	90	12'-0"	LJ13SUS HANGER
LJ26	7	12'-0"	LJ26 HANGER
HTU26	150	12'-0"	1 1/2" HTU26 HANGER
LJ13-SUS	1	12'-0"	LJ13-SUS HANGER
LJ13SUS	90	12'-0"	LJ13SUS HANGER
LJ26	7	12'-0"	LJ26 HANGER
HTU26	150	12'-0"	1 1/2" HTU26 HANGER
LJ13-SUS	1	12'-0"	LJ13-SUS HANGER
LJ13SUS	90	12'-0"	LJ13SUS HANGER
LJ26	7	12'-0"	LJ26 HANGER
HTU26	150	12'-0"	1 1/2" HTU26 HANGER
LJ13-SUS	1	12'-0"	LJ13-SUS HANGER
LJ13SUS	90	12'-0"	LJ13SUS HANGER
LJ26	7	12'-0"	LJ26 HANGER
HTU26	150	12'-0"	1 1/2" HTU26 HANGER
LJ13-SUS	1	12'-0"	LJ13-SUS HANGER
LJ13SUS	90	12'-0"	LJ13SUS HANGER
LJ26	7	12'-0"	LJ26 HANGER
HTU26	150	12'-0"	1 1/2" HTU26 HANGER
LJ13-SUS	1	12'-0"	LJ13-SUS HANGER
LJ13SUS	90	12'-0"	LJ13SUS HANGER
LJ26	7	12'-0"	LJ26 HANGER
HTU26	150	12'-0"	1 1/2" HTU26 HANGER
LJ13-SUS	1	12'-0"	LJ13-SUS HANGER
LJ13SUS	90	12'-0"	LJ13SUS HANGER
LJ26	7	12'-0"	LJ26 HANGER
HTU26	150	12'-0"	1 1/2" HTU26 HANGER
LJ13-SUS	1	12'-0"	LJ13-SUS HANGER
LJ13SUS	90	12'-0"	LJ13SUS HANGER
LJ26	7	12'-0"	LJ26 HANGER
HTU26	150	12'-0"	1 1/2" HTU26 HANGER
LJ13-SUS	1	12'-0"	LJ13-SUS HANGER
LJ13SUS	90	12'-0"	LJ13SUS HANGER
LJ26	7	12'-0"	LJ26 HANGER
HTU26	150	12'-0"	1 1/2" HTU26 HANGER
LJ13-SUS	1	12'-0"	LJ13-SUS HANGER
LJ13SUS	90	12'-0"	LJ13SUS HANGER
LJ26	7	12'-0"	LJ26 HANGER
HTU26	150	12'-0"	1 1/2" HTU26 HANGER
LJ13-SUS	1	12'-0"	LJ13-SUS HANGER
LJ13SUS	90	12'-0"	LJ13SUS HANGER
LJ26	7	12'-0"	LJ26 HANGER
HTU26	150	12'-0"	1 1/2" HTU26 HANGER
LJ13-SUS	1	12'-0"	LJ13-SUS HANGER
LJ13SUS	90	12'-0"	LJ13SUS HANGER
LJ26	7	12'-0"	LJ26 HANGER
HTU26	150	12'-0"	1 1/2" HTU26 HANGER
LJ13-SUS	1	12'-0"	LJ13-SUS HANGER
LJ13SUS	90	12'-0"	LJ13SUS HANGER
LJ26	7	12'-0"	LJ26 HANGER
HTU26	150	12'-0"	1 1/2" HTU26 HANGER
LJ13-SUS	1	12'-0"	LJ13-SUS HANGER
LJ13SUS	90	12'-0"	LJ13SUS HANGER
LJ26	7	12'-0"	LJ26 HANGER
HTU26	150	12'-0"	1 1/2" HTU26 HANGER
LJ13-SUS	1	12'-0"	LJ13-SUS HANGER
LJ13SUS	90	12'-0"	LJ13SUS HANGER
LJ26	7	12'-0"	LJ26 HANGER
HTU26	150	12'-0"	1 1/2" HTU26 HANGER
LJ13-SUS	1	12'-0"	LJ13-SUS HANGER
LJ13SUS	90	12'-0"	LJ13SUS HANGER
LJ26	7	12'-0"	LJ26 HANGER
HTU26	150	12'-0"	1 1/2" HTU26 HANGER
LJ13-SUS	1	12'-0"	LJ13-SUS HANGER
LJ13SUS	90	12'-0"	LJ13SUS HANGER
LJ26	7	12'-0"	LJ26 HANGER
HTU26	150	12'-0"	1 1/2" HTU26 HANGER
LJ13-SUS	1	12'-0"	LJ13-SUS HANGER
LJ13SUS	90	12'-0"	LJ13SUS HANGER
LJ26	7	12'-0"	LJ26 HANGER
HTU26	150	12'-0"	1 1/2" HTU26 HANGER
LJ13-SUS	1	12'-0"	LJ13-SUS HANGER
LJ13SUS	90	12'-0"	LJ13SUS HANGER
LJ26	7	12'-0"	LJ26 HANGER
HTU26	150	12'-0"	1 1/2" HTU26 HANGER
LJ13-SUS	1	12'-0"	LJ13-SUS HANGER
LJ13SUS	90	12'-0"	LJ13SUS HANGER
LJ26	7	12'-0"	LJ26 HANGER
HTU26	150	12'-0"	1 1/2" HTU26 HANGER
LJ13-SUS	1	12'-0"	LJ13-SUS HANGER
LJ13SUS	90	12'-0"	LJ13SUS HANGER
LJ26	7	12'-0"	LJ26 HANGER
HTU26	150	12'-0"	1 1/2" HTU26 HANGER
LJ13-SUS	1	12'-0"	LJ13-SUS HANGER
LJ13SUS	90	12'-0"	LJ13SUS HANGER
LJ26	7	12'-0"	LJ26 HANGER
HTU26	150	12'-0"	1 1/2" HTU26 HANGER
LJ13-SUS	1	12'-0"	LJ13-SUS HANGER
LJ13SUS	90	12'-0"	LJ13SUS HANGER
LJ26	7	12'-0"	LJ26 HANGER
HTU26	150	12'-0"	1 1/2" HTU26 HANGER
LJ13-SUS	1	12'-0"	LJ13-SUS HANGER
LJ13SUS	90	12'-0"	LJ13SUS HANGER
LJ26	7	12'-0"	LJ26 HANGER
HTU26	150	12'-0"	1 1/2" HTU26 HANGER
LJ13-SUS	1	12'-0"	LJ13-SUS HANGER
LJ13SUS	90	12'-0"	LJ13SUS HANGER
LJ26	7	12'-0"	LJ26 HANGER
HTU26	150	12'-0"	1 1/2" HTU26 HANGER
LJ13-SUS	1	12'-0"	LJ13-SUS HANGER
LJ13SUS	90	12'-0"	LJ13SUS HANGER
LJ26	7	12'-0"	LJ26 HANGER
HTU26	150	12'-0"	1 1/2" HTU26 HANGER
LJ13-SUS	1	12'-0"	LJ13-SUS HANGER
LJ13SUS	90	12'-0"	LJ13SUS HANGER
LJ26	7	12'-0"	LJ26 HANGER
HTU26	150	12'-0"	1 1/2" HTU26 HANGER
LJ13-SUS	1	12'-0"	LJ13-SUS HANGER
LJ13SUS	90	12'-0"	LJ13SUS HANGER
LJ26	7	12'-0"	LJ26 HANGER
HTU26	150	12'-0"	1 1/2" HTU26 HANGER
LJ13-SUS	1	12'-0"	LJ13-SUS HANGER
LJ13SUS	90	12'-0"	LJ13SUS HANGER
LJ26	7	12'-0"	LJ26 HANGER
HTU26	150	12'-0"	1 1/2" HTU26 HANGER
LJ13-SUS	1	12'-0"	LJ13-SUS HANGER
LJ13SUS	90	12'-0"	LJ13SUS HANGER
LJ26	7	12'-0"	LJ26 HANGER
HTU26	150	12'-0"	1 1/2" HTU26 HANGER
LJ13-SUS	1	12'-0"	LJ13-SUS HANGER
LJ13S			