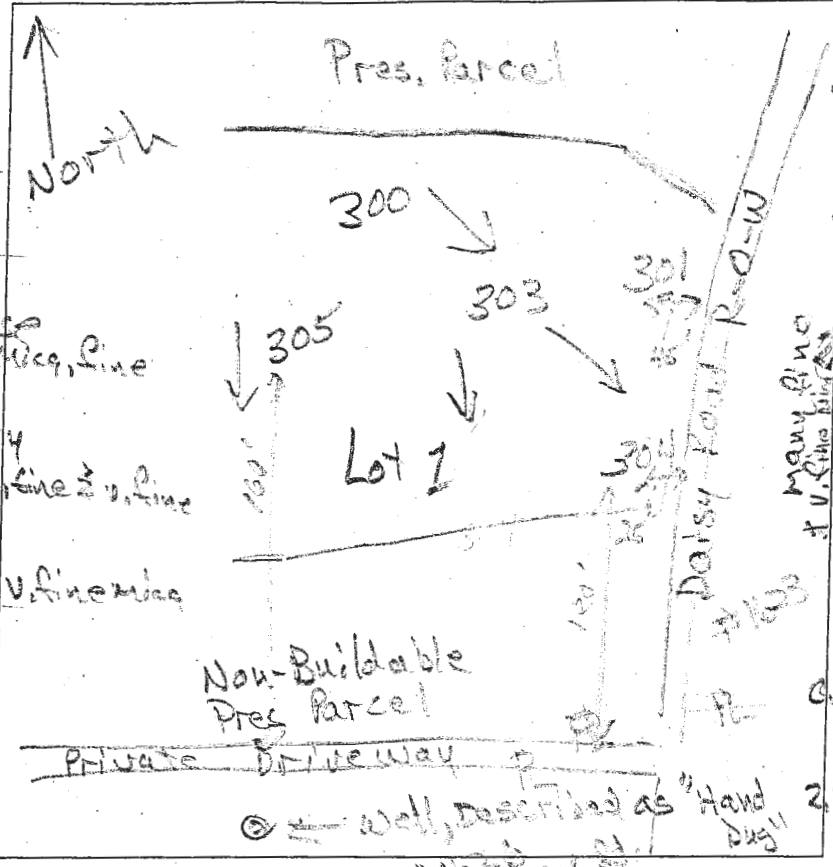


Lot 7

304

A/P



301
0.6' brn sil thick platy
ycl-red L
2.2' 3 csbk
red sil
21' thin platy dense columnar mica, fine
red & lg grey sil thin platy
8' many mica fine v. fine
red chs
thin platy
12' many fine v. fine mica

0.6' brn sil thick platy
red L thick platy
2' red sil thin platy dense mica
2' red & lg grey sil thin platy
red chs thin platy
11.5'

302
1' brn sil thick platy
yel-red sil
2 csbk
27' red & lg grey sil thin platy
many v. fine mica
10' red chs sil thin platy
many fine v. fine mica
11'

305
0.7' brn sil thick platy
yel-red sil
1' csbk, dense
2.2' red & ye flow sil, fine dense
many v. fine mica
2.9' red & lg grey sil thin platy
many fine v. fine mica
11'

300
0.7' brn sil thick platy
yel-red & brn sil, thick platy
1.4' red sil thin platy
many fine v. fine mica
2.0' red & yellow chs sil, thin
many fine v. fine mica
11'

DATE	TEST #	DEPTH	START	BREAK 1" DROP	STOP 2" DROP	TIME OF 2ND INCH	P/F/H
9/14/15	301	4' 12"	10:05	10:07	10:13	6	P
9/14/15	304	3.6' 11.5"	10:20	10:23	10:28	5	P
9/14/15	303	3.6' 11"	10:41	10:47	11:00	13	P
9/14/15	300	4' 11"	10:52	10:57	11:02	5	P
9/14/15	305	4.5' 11"	11:11	11:18	11:29	11	P

REMARKS
 SANITARIAN R. Bricker BACKHOE Level Land OTHERS Tim Trago
 TEST HOLES USED IN SDA _____ AVG. PERC TIME _____ SQ. FT/BR _____
 TRENCH WIDTH _____ INLET DEPTH _____ MAX. BOT DEPTH _____ EFFECTIVE SW _____