



General Notes:

1. Subject Property Zoned RC-000 Per 2/28/04 Comprehensive Zoning Plan And The "Comp Use" Zoning Regulation Amendments Effective 7/20/06.
2. Contingent on the Maryland Department of Transportation's approval of the proposed transportation system as projected by Howard County's Geographic Information System (GIS) for the year 2015.
3. Station 100+00.00 North 207.916/0.145 4343 1,207,265.6466
4. Station 100+00.00 North 207.916/0.145 4343 1,207,265.6466
5. Station 100+00.00 North 207.916/0.145 4343 1,207,265.6466
6. Station 100+00.00 North 207.916/0.145 4343 1,207,265.6466
7. Station 100+00.00 North 207.916/0.145 4343 1,207,265.6466
8. Station 100+00.00 North 207.916/0.145 4343 1,207,265.6466
9. Station 100+00.00 North 207.916/0.145 4343 1,207,265.6466
10. Station 100+00.00 North 207.916/0.145 4343 1,207,265.6466
11. Station 100+00.00 North 207.916/0.145 4343 1,207,265.6466
12. Station 100+00.00 North 207.916/0.145 4343 1,207,265.6466
13. Station 100+00.00 North 207.916/0.145 4343 1,207,265.6466
14. Station 100+00.00 North 207.916/0.145 4343 1,207,265.6466
15. Station 100+00.00 North 207.916/0.145 4343 1,207,265.6466
16. Station 100+00.00 North 207.916/0.145 4343 1,207,265.6466
17. Station 100+00.00 North 207.916/0.145 4343 1,207,265.6466
18. Station 100+00.00 North 207.916/0.145 4343 1,207,265.6466
19. Station 100+00.00 North 207.916/0.145 4343 1,207,265.6466
20. Station 100+00.00 North 207.916/0.145 4343 1,207,265.6466
21. Station 100+00.00 North 207.916/0.145 4343 1,207,265.6466

General Notes (Cont.):

22. The Lots Shown Herein Comply With The Minimum Ownership Width And Lot Area As Required By The Maryland State Department Of The Environment.
23. Open Space Fee In Lieu Payment of \$1,500.00 Is Based On \$1,500.00/100' x 3.00' (Lot 1, Lot 2 and Lot 3). See 4. Green Homeowners Association, Inc. being vacated by this Plan for Correspondence to Howard County, Maryland.
24. The Right of Way for Jennings Chapel Road, Proposed Dedication to Howard County, Maryland, and Reconfigured as Shown on Plat No. 10917, is Hereby Requested and Reconfigured On This Plat for Correspondence to Howard County, Maryland.

Area Tabulation This Subdivision

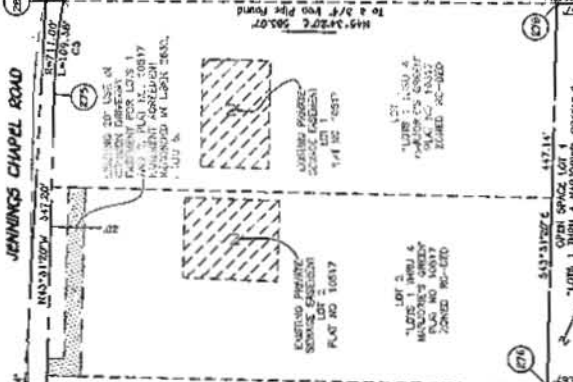
TOTAL AREA OF THIS SUBDIVISION AS SHOWN ON THIS PLAN	10.000 AC.
TOTAL AREA OF OPEN SPACE LOTS TO BE DEDICATED TO HOWARD COUNTY	0.000 AC.
TOTAL AREA OF NON-RESIDENTIAL USE LOTS TO BE DEDICATED TO HOWARD COUNTY	0.000 AC.
TOTAL AREA OF RESIDENTIAL USE LOTS TO BE DEDICATED TO HOWARD COUNTY	0.000 AC.
TOTAL AREA OF OPEN SPACE LOTS TO BE DEDICATED TO HOWARD COUNTY	0.000 AC.
TOTAL AREA OF NON-RESIDENTIAL USE LOTS TO BE DEDICATED TO HOWARD COUNTY	0.000 AC.
TOTAL AREA OF RESIDENTIAL USE LOTS TO BE DEDICATED TO HOWARD COUNTY	0.000 AC.
TOTAL AREA OF OPEN SPACE LOTS TO BE DEDICATED TO HOWARD COUNTY	0.000 AC.
TOTAL AREA OF NON-RESIDENTIAL USE LOTS TO BE DEDICATED TO HOWARD COUNTY	0.000 AC.
TOTAL AREA OF RESIDENTIAL USE LOTS TO BE DEDICATED TO HOWARD COUNTY	0.000 AC.

Area Tabulation This Subdivision (Cont.):

TOTAL AREA OF THIS SUBDIVISION AS SHOWN ON THIS PLAN	10.000 AC.
TOTAL AREA OF OPEN SPACE LOTS TO BE DEDICATED TO HOWARD COUNTY	0.000 AC.
TOTAL AREA OF NON-RESIDENTIAL USE LOTS TO BE DEDICATED TO HOWARD COUNTY	0.000 AC.
TOTAL AREA OF RESIDENTIAL USE LOTS TO BE DEDICATED TO HOWARD COUNTY	0.000 AC.
TOTAL AREA OF OPEN SPACE LOTS TO BE DEDICATED TO HOWARD COUNTY	0.000 AC.
TOTAL AREA OF NON-RESIDENTIAL USE LOTS TO BE DEDICATED TO HOWARD COUNTY	0.000 AC.
TOTAL AREA OF RESIDENTIAL USE LOTS TO BE DEDICATED TO HOWARD COUNTY	0.000 AC.
TOTAL AREA OF OPEN SPACE LOTS TO BE DEDICATED TO HOWARD COUNTY	0.000 AC.
TOTAL AREA OF NON-RESIDENTIAL USE LOTS TO BE DEDICATED TO HOWARD COUNTY	0.000 AC.
TOTAL AREA OF RESIDENTIAL USE LOTS TO BE DEDICATED TO HOWARD COUNTY	0.000 AC.

Coordinate Tabulation

POINT	NORTH (ELEV.)	EAST (ELEV.)	CLASS (COORDINATE)
1	547094.5004	1086267.1169	170444-221179
2	547094.5004	1086267.1169	170444-221179
3	547094.5004	1086267.1169	170444-221179
4	547094.5004	1086267.1169	170444-221179
5	547094.5004	1086267.1169	170444-221179
6	547094.5004	1086267.1169	170444-221179
7	547094.5004	1086267.1169	170444-221179
8	547094.5004	1086267.1169	170444-221179
9	547094.5004	1086267.1169	170444-221179
10	547094.5004	1086267.1169	170444-221179
11	547094.5004	1086267.1169	170444-221179
12	547094.5004	1086267.1169	170444-221179
13	547094.5004	1086267.1169	170444-221179
14	547094.5004	1086267.1169	170444-221179
15	547094.5004	1086267.1169	170444-221179
16	547094.5004	1086267.1169	170444-221179
17	547094.5004	1086267.1169	170444-221179
18	547094.5004	1086267.1169	170444-221179
19	547094.5004	1086267.1169	170444-221179
20	547094.5004	1086267.1169	170444-221179
21	547094.5004	1086267.1169	170444-221179
22	547094.5004	1086267.1169	170444-221179
23	547094.5004	1086267.1169	170444-221179
24	547094.5004	1086267.1169	170444-221179
25	547094.5004	1086267.1169	170444-221179
26	547094.5004	1086267.1169	170444-221179
27	547094.5004	1086267.1169	170444-221179
28	547094.5004	1086267.1169	170444-221179
29	547094.5004	1086267.1169	170444-221179
30	547094.5004	1086267.1169	170444-221179
31	547094.5004	1086267.1169	170444-221179
32	547094.5004	1086267.1169	170444-221179
33	547094.5004	1086267.1169	170444-221179
34	547094.5004	1086267.1169	170444-221179
35	547094.5004	1086267.1169	170444-221179
36	547094.5004	1086267.1169	170444-221179
37	547094.5004	1086267.1169	170444-221179
38	547094.5004	1086267.1169	170444-221179
39	547094.5004	1086267.1169	170444-221179
40	547094.5004	1086267.1169	170444-221179
41	547094.5004	1086267.1169	170444-221179
42	547094.5004	1086267.1169	170444-221179
43	547094.5004	1086267.1169	170444-221179
44	547094.5004	1086267.1169	170444-221179
45	547094.5004	1086267.1169	170444-221179
46	547094.5004	1086267.1169	170444-221179
47	547094.5004	1086267.1169	170444-221179
48	547094.5004	1086267.1169	170444-221179
49	547094.5004	1086267.1169	170444-221179
50	547094.5004	1086267.1169	170444-221179
51	547094.5004	1086267.1169	170444-221179
52	547094.5004	1086267.1169	170444-221179
53	547094.5004	1086267.1169	170444-221179
54	547094.5004	1086267.1169	170444-221179
55	547094.5004	1086267.1169	170444-221179
56	547094.5004	1086267.1169	170444-221179
57	547094.5004	1086267.1169	170444-221179
58	547094.5004	1086267.1169	170444-221179
59	547094.5004	1086267.1169	170444-221179
60	547094.5004	1086267.1169	170444-221179
61	547094.5004	1086267.1169	170444-221179
62	547094.5004	1086267.1169	170444-221179
63	547094.5004	1086267.1169	170444-221179
64	547094.5004	1086267.1169	170444-221179
65	547094.5004	1086267.1169	170444-221179
66	547094.5004	1086267.1169	170444-221179
67	547094.5004	1086267.1169	170444-221179
68	547094.5004	1086267.1169	170444-221179
69	547094.5004	1086267.1169	170444-221179
70	547094.5004	1086267.1169	170444-221179
71	547094.5004	1086267.1169	170444-221179
72	547094.5004	1086267.1169	170444-221179
73	547094.5004	1086267.1169	170444-221179
74	547094.5004	1086267.1169	170444-221179
75	547094.5004	1086267.1169	170444-221179
76	547094.5004	1086267.1169	170444-221179
77	547094.5004	1086267.1169	170444-221179
78	547094.5004	1086267.1169	170444-221179
79	547094.5004	1086267.1169	170444-221179
80	547094.5004	1086267.1169	170444-221179
81	547094.5004	1086267.1169	170444-221179
82	547094.5004	1086267.1169	170444-221179
83	547094.5004	1086267.1169	170444-221179
84	547094.5004	1086267.1169	170444-221179
85	547094.5004	1086267.1169	170444-221179
86	547094.5004	1086267.1169	170444-221179
87	547094.5004	1086267.1169	170444-221179
88	547094.5004	1086267.1169	170444-221179
89	547094.5004	1086267.1169	170444-221179
90	547094.5004	1086267.1169	170444-221179
91	547094.5004	1086267.1169	170444-221179
92	547094.5004	1086267.1169	170444-221179
93	547094.5004	1086267.1169	170444-221179
94	547094.5004	1086267.1169	170444-221179
95	547094.5004	1086267.1169	170444-221179
96	547094.5004	1086267.1169	170444-221179
97	547094.5004	1086267.1169	170444-221179
98	547094.5004	1086267.1169	170444-221179
99	547094.5004	1086267.1169	170444-221179
100	547094.5004	1086267.1169	170444-221179



General Notes (Cont.):

22. The Lots Shown Herein Comply With The Minimum Ownership Width And Lot Area As Required By The Maryland State Department Of The Environment.
23. Open Space Fee In Lieu Payment of \$1,500.00 Is Based On \$1,500.00/100' x 3.00' (Lot 1, Lot 2 and Lot 3). See 4. Green Homeowners Association, Inc. being vacated by this Plan for Correspondence to Howard County, Maryland.
24. The Right of Way for Jennings Chapel Road, Proposed Dedication to Howard County, Maryland, and Reconfigured as Shown on Plat No. 10917, is Hereby Requested and Reconfigured On This Plat for Correspondence to Howard County, Maryland.

Curve Tabulation

CURVE	LENGTH	BEGINNING	END	BEARING
C1	442.55131	0+00.00	0+442.55	S 89° 57' 42" E
C2	442.55131	0+442.55	0+885.10	S 89° 57' 42" E
C3	442.55131	0+885.10	1+327.65	S 89° 57' 42" E
C4	442.55131	1+327.65	1+770.20	S 89° 57' 42" E
C5	442.55131	1+770.20	2+212.75	S 89° 57' 42" E
C6	442.55131	2+212.75	2+655.30	S 89° 57' 42" E
C7	442.55131	2+655.30	3+097.85	S 89° 57' 42" E
C8	442.55131	3+097.85	3+540.40	S 89° 57' 42" E
C9	442.55131	3+540.40	3+982.95	S 89° 57' 42" E
C10	442.55131	3+982.95	4+425.50	S 89° 57' 42" E
C11	442.55131	4+425.50	4+868.05	S 89° 57' 42" E
C12	442.55131	4+868.05	5+310.60	S 89° 57' 42" E
C13	442.55131	5+310.60	5+753.15	S 89° 57' 42" E
C14	442.55131	5+753.15	6+195.70	S 89° 57' 42" E
C15	442.55131	6+195.70	6+638.25	S 89° 57' 42" E
C16	442.55131	6+638.25	7+080.80	S 89° 57' 42" E
C17	442.55131	7+080.80	7+523.35	S 89° 57' 42" E
C18	442.55131	7+523.35	7+965.90	S 89° 57' 42" E
C19	442.55131	7+965.90	8+408.45	S 89° 57' 42" E
C20	442.55131	8+408.45	8+851.00	S 89° 57' 42" E
C21	442.55131	8+851.00	9+293.55	S 89° 57' 42" E
C22	442.55131	9+293.55	9+736.10	S 89° 57' 42" E
C23	442.55131	9+736.10	10+178.65	S 89° 57' 42" E
C24	442.55131	10+178.65	10+621.20	S 89° 57' 42" E
C25	442.55131	10+621.20	11+063.75	S 89° 57' 42" E
C26	442.55131	11+063.75	11+506.30	S 89° 57' 42" E
C27	442.55131	11+506.30	11+948.85	S 89° 57' 42" E
C28	442.55131	11+948.85	12+391.40	S 89° 57' 42" E
C29	442.55131	12+391.40	12+833.95	S 89° 57' 42" E
C30	442.55131	12+833.95	13+276.50	S 89° 57' 42" E
C31	442.55131	13+276.50	13+719.05	S 89° 57' 42" E
C32	442.55131	13+719.05	14+161.60	S 89° 57' 42" E
C33	442.55131	14+161.60	14+604.15	S 89° 57' 42" E
C34	442.55131	14+604.15	15+046.70	S 89° 57' 42" E
C35	442.55131	15+046.70	15+489.25	S 89° 57' 42" E
C36	442.55131	15+489.25	15+931.80	S 89° 57' 42" E
C37	442.55131	15+931.80	16+374.35	S 89° 57' 42" E
C38	442.55131	16+374.35	16+816.90	S 89° 57' 42" E
C39	442.55131	16+816.90	17+259.45	S 89° 57' 42" E
C40	442.55131	17+259.45	17+702.00	S 89° 57' 42" E
C41	442.55131	17+702.00	18+144.55	S 89° 57' 42" E
C42	442.55131	18+144.55	18+587.10	S 89° 57' 42" E
C43	442.55131	18+587.10	19+029.65	S 89° 5