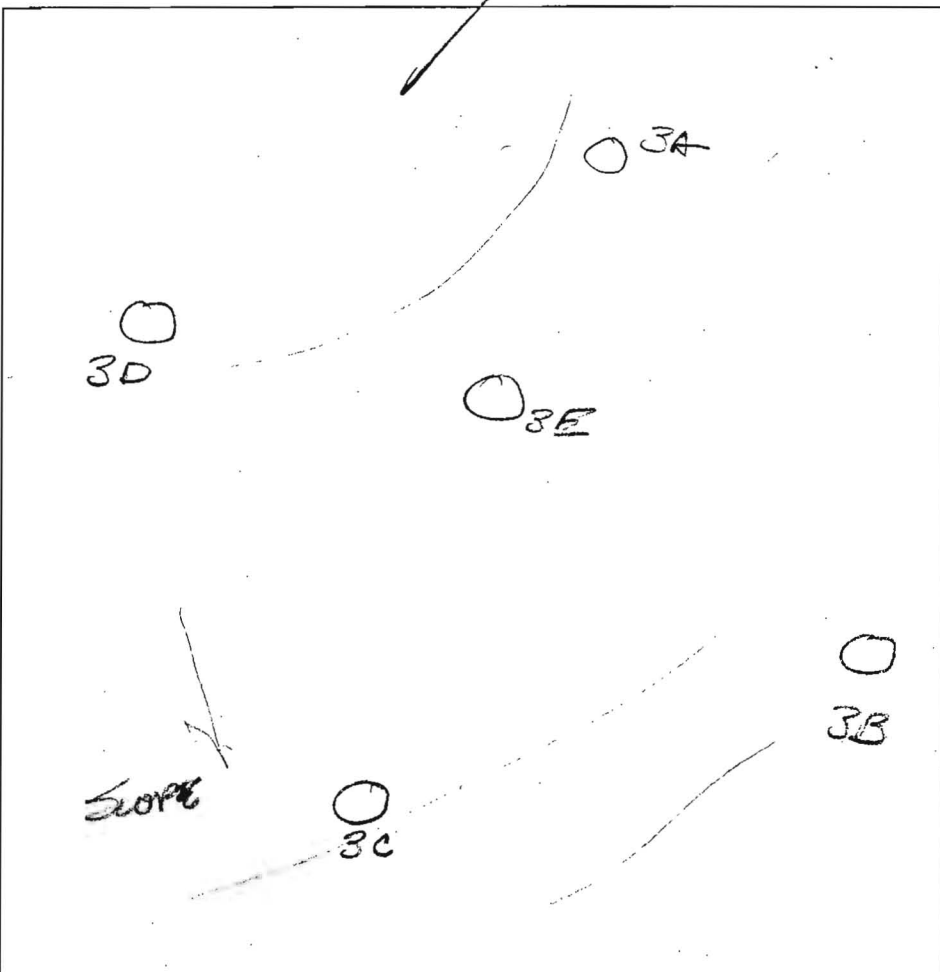


A/P

3D
Brown loam 1'
Yellow Brown Silty Clay loam 3'
Yellow Brown Silty loam
↓
Silt loam
↓ 50
Rock

3C
Brown loam 1'
Yellow Brown Silty Clay loam
↓
Silt loam 3'
Yellow Brown Silty loam
↓ 50
Rock

3B
Brown loam 8"
Yellow Brown Silty loam 2'
Red Brown Silty loam
↓
Yellow Brown Silty loam
↓
Loamy sand



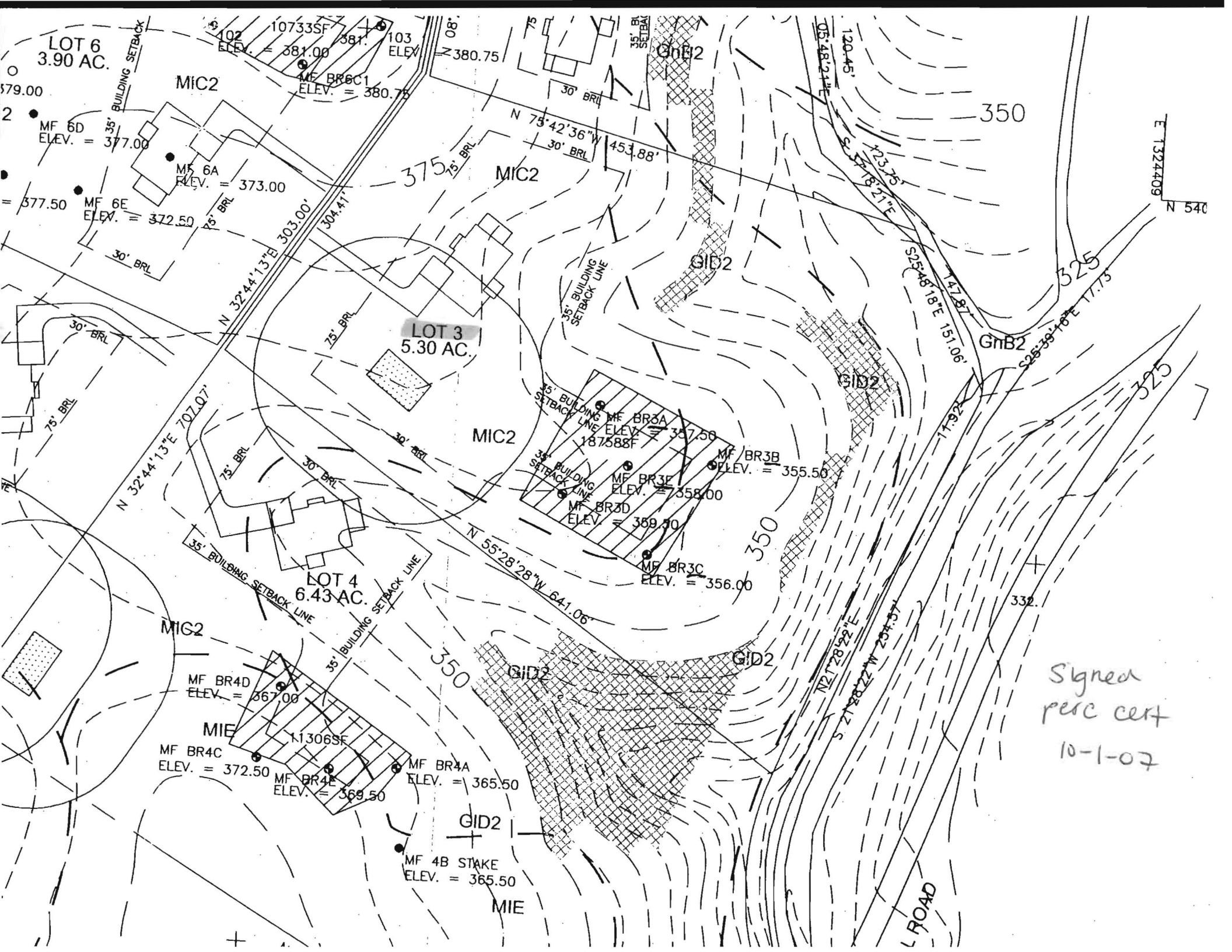
3E
Brown loam 8"
Brown Silty loam
↓
Red Silty loam 9'
Brown Silty loam 15"
↓
Hard packed
↓
Bottom

3A
Brown loam 8"
Yellow Brown Silty loam
↓
Silt loam 2'
Yellow Brown Silty loam
↓
50
over 155 1/2'

DATE	TEST #	DEPTH	START	BREAK 1" DROP	STOP 2" DROP	TIME OF 2nd INCH	P/F/H
12/1/03	3D	5' 11 1/2'	2:08	2:14	2:28	12min	P
	3C	5' 12'	2:27	2:30	2:35	3min	P
	3B	5' 12'	2:38	2:41	2:44	3min	P
	3E	6' 12 1/2'	2:48	2:54	3:02	8min	P
	3A	5 1/2' 12'	3:05	3:08	3:12	4min	P

REMARKS _____
 SANITARIAN FA BACKHOE _____ OTHERS Mark Johnson
 TEST HOLES USED IN SDA _____ AVG. PERC TIME _____ SQ. FT/BR _____
 TRENCH WIDTH _____ INLET DEPTH _____ MAX. BOT DEPTH _____ EFFECTIVE S/W _____

Willie Crowder Bob Schaefer
 Mark Johnson



LOT 6
3.90 AC.

LOT 3
5.30 AC.

LOT 4
6.43 AC.

MIC2

MIC2

MIC2

MIC2

MIE

GID2

MIE

GIB2

GID2

GID2

GID2

GID2

Signed
perc cert
10-1-07

L ROAD

E 13242409
N 540