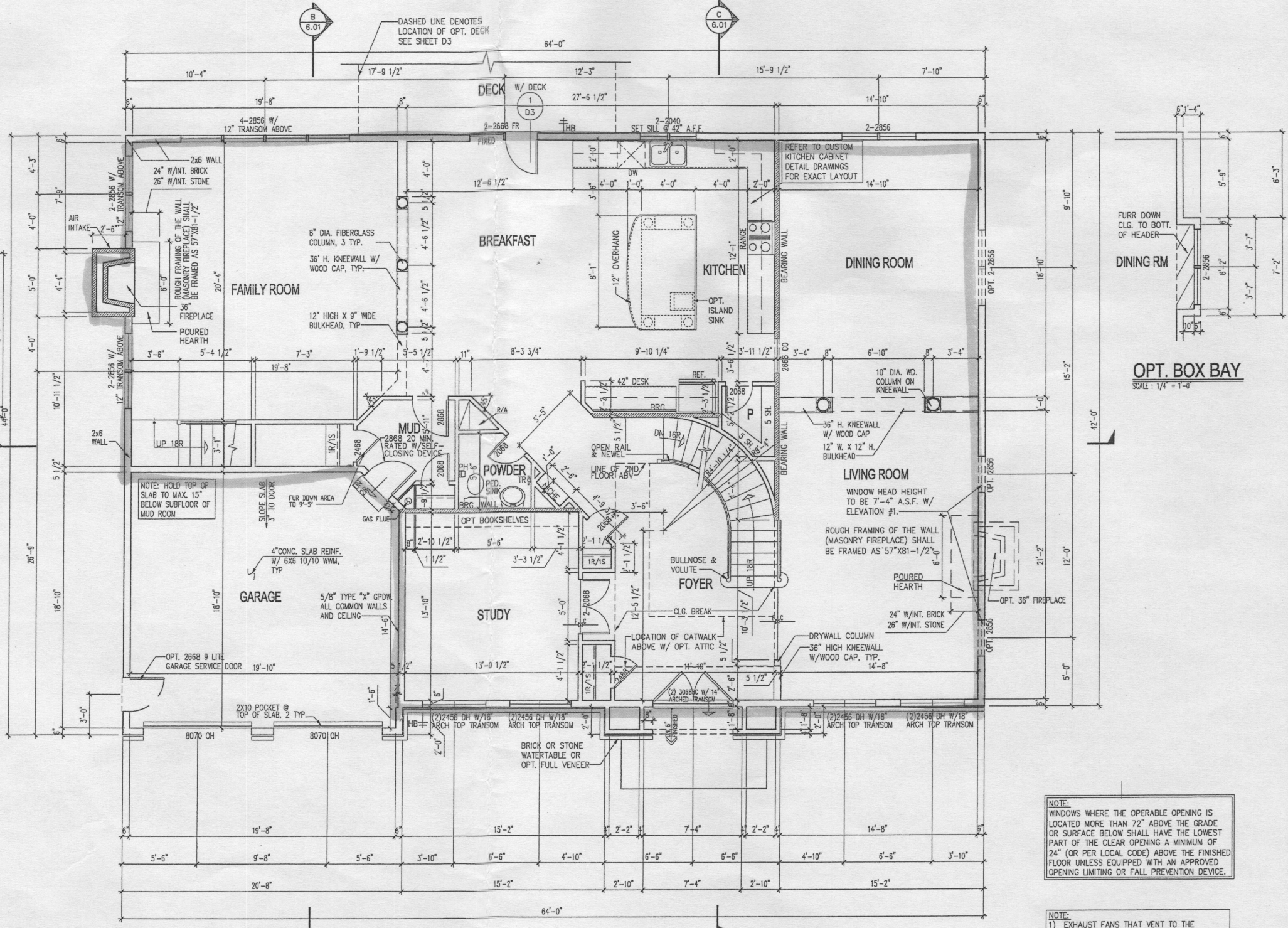
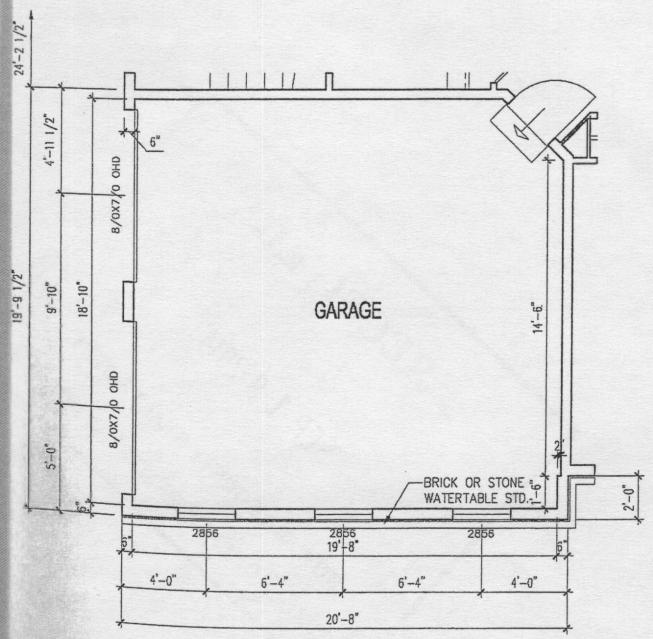
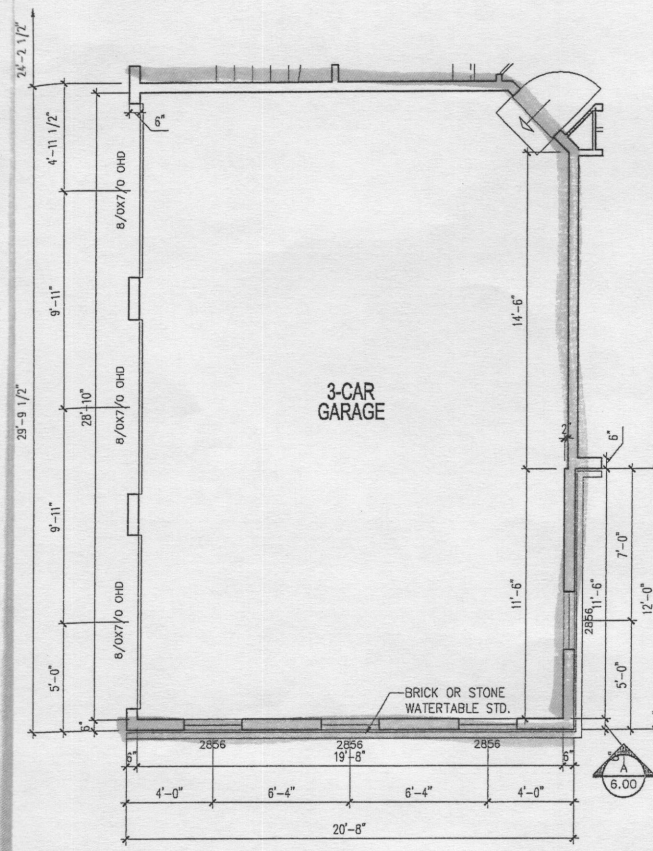
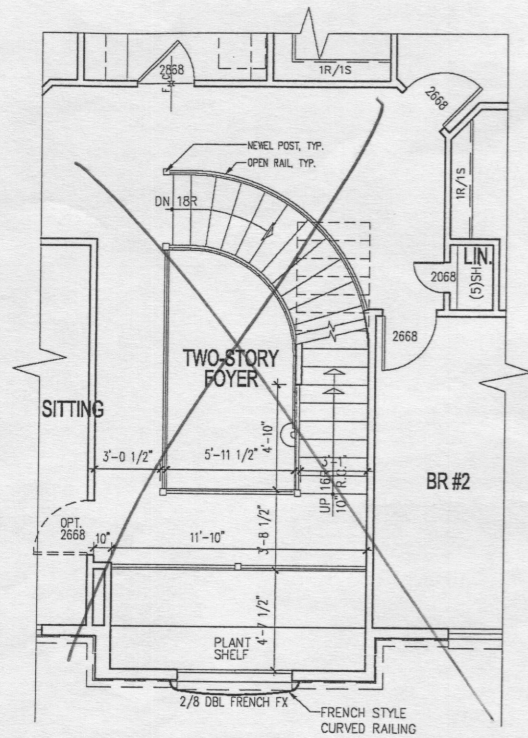


= Finished Areas

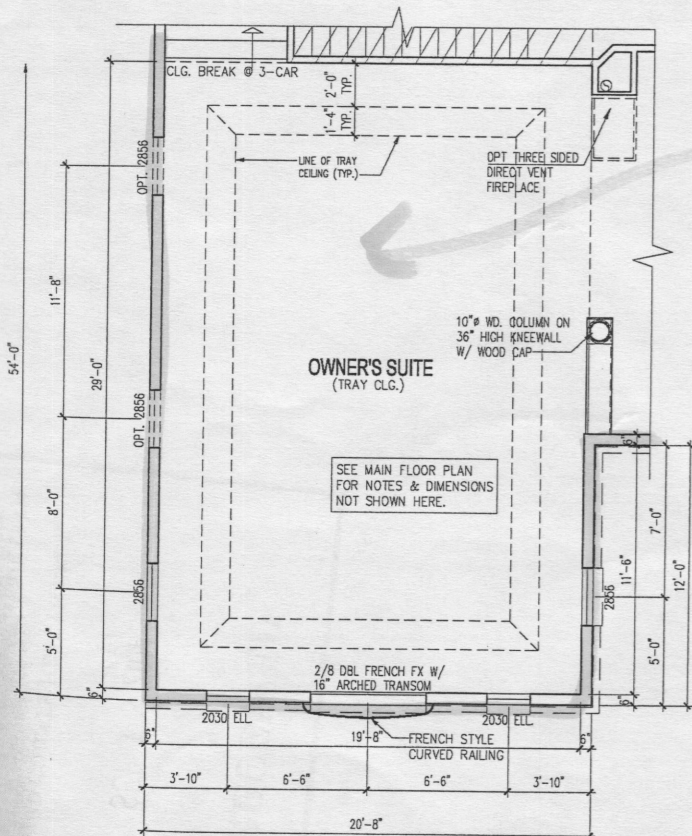


FIRST FLOOR PLAN
SCALE: 1/4" = 1'-0"
NOTE:
1) REFERENCE PARTIAL PLANS FOR WINDOW AND DOOR SIZES AND LOCATIONS.
2) REFERENCE TYPICAL WALL SECTION FOR ADDITIONAL INFORMATION.
3) UNLESS OTHERWISE NOTED WINDOW HEAD HEIGHT SHALL BE 7'-4" ABOVE SUBFLOOR @ FRONT (ELEVATION W/ELEV. #1. SIDE & REAR WINDOWS AND ALL OTHER FRONT ELEV'S. TO BE 8'-0" ABOVE SUBFLOOR.
4) UNLESS OTHERWISE NOTED ALL INTERIOR PARTITIONS SHALL BE 3-1/2"

REV. #	DATE
1001/2005	
REV. #7	06/01/2012
ACR # 1001	06/20/2012
ACR # 1038	02/24/2014
ACR #1041	09/04/2014



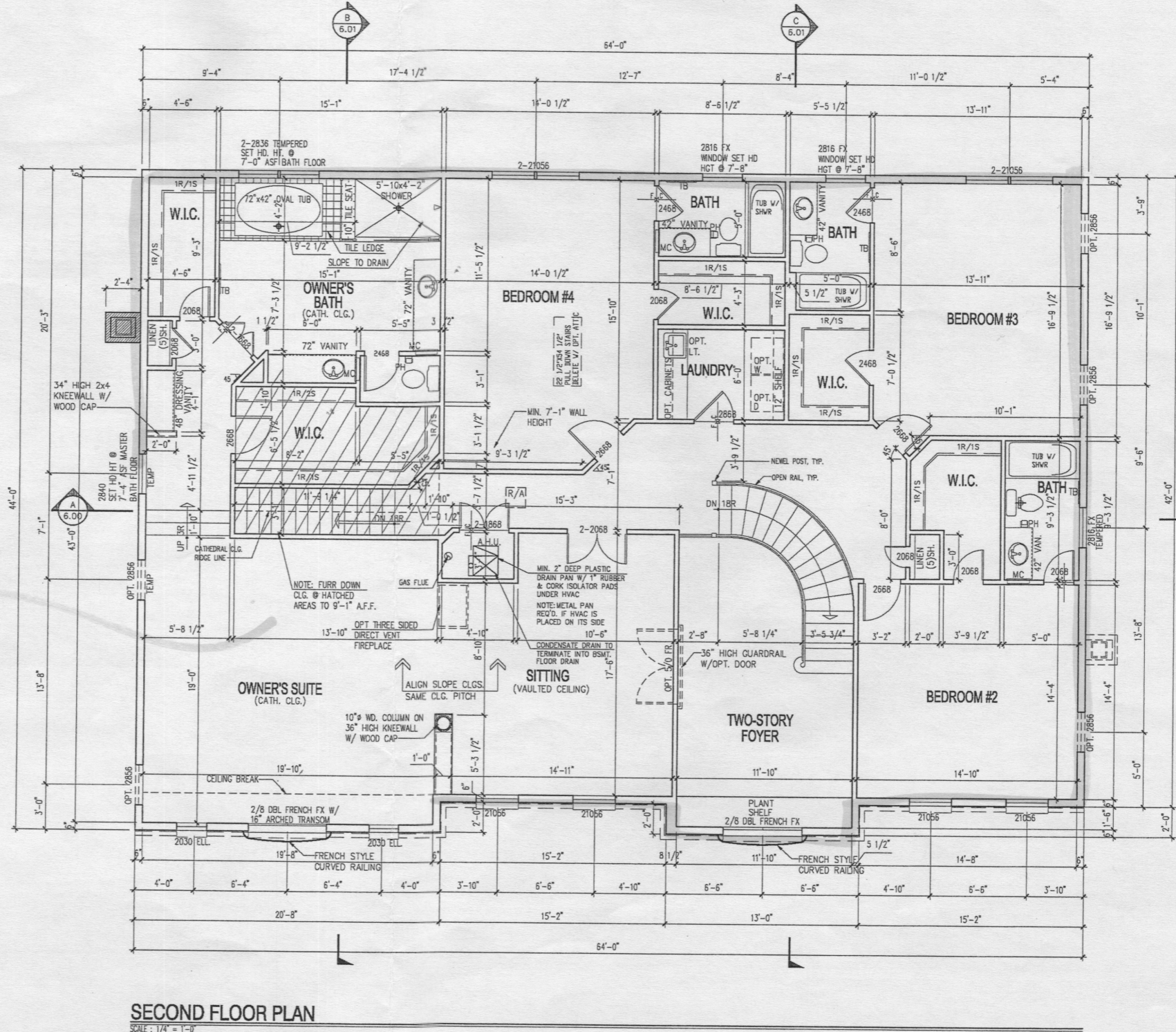
PART. PLAN W/OPT. ATTIC
SCALE: 1/4" = 1'-0"



PART. PLAN W/OPT. 3 CAR SIDE LOAD GARAGE
SCALE: 1/4" = 1'-0"

- 4 Bedrooms
- 4 Baths

[Symbol] = Finished Areas



SECOND FLOOR PLAN
SCALE: 1/4" = 1'-0"

NOTE:
1) REFERENCE PARTIAL PLANS FOR WINDOW AND DOOR SIZES AND LOCATIONS.
2) REFERENCE TYPICAL WALL SECTION FOR ADDITIONAL INFORMATION.
3) UNLESS OTHERWISE NOTED WINDOW HEAD HEIGHT SHALL BE 7'-4" ABOVE SUBFLOOR.
4) UNLESS OTHERWISE NOTED ALL INTERIOR PARTITIONS SHALL BE 3-1/2"

NOTE:
WASHING MACHINE WILL ALWAYS BE ON THE LEFT, DRYER WILL ALWAYS BE ON THE RIGHT EVEN IN THE REVERSE PLAN.

NOTE:
WINDOWS WHERE THE OPERABLE OPENING IS LOCATED MORE THAN 72" ABOVE THE GRADE OR SURFACE BELOW SHALL HAVE THE LOWEST PART OF THE CLEAR OPENING A MINIMUM OF 24" (OR PER LOCAL CODE) ABOVE THE FINISHED FLOOR UNLESS EQUIPPED WITH AN APPROVED OPENING LIMITING OR FALL PREVENTION DEVICE.

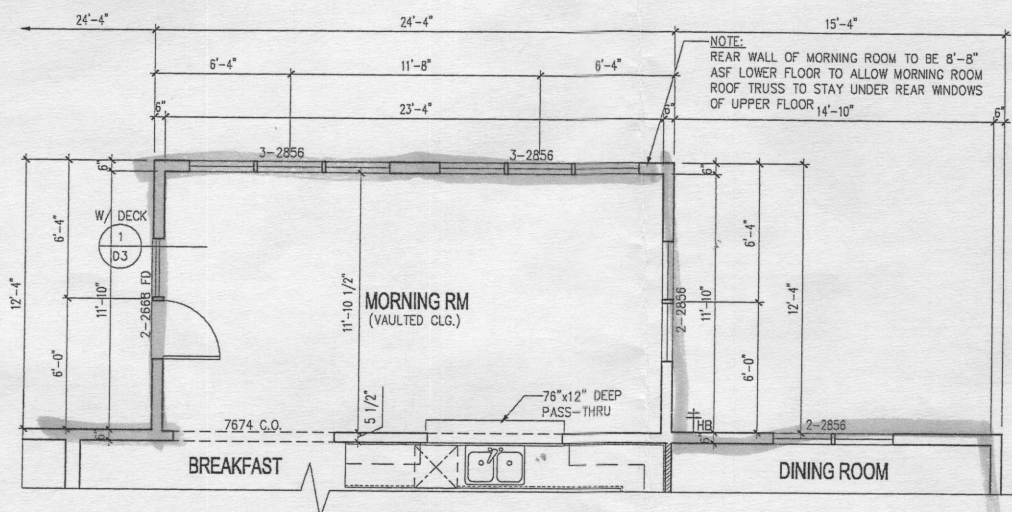
NOTE:
1) EXHAUST FANS THAT VENT TO THE EXTERIOR WILL BE INSTALLED IN ALL BATHS WITHOUT WINDOWS.
2) PROVIDE @ LEAST 1 HANDRAIL FOR STAIRS HAVING 4 OR MORE RISERS.
3) GLASS DOORS, SIDE-LITES, & SHOWER ENCLOSURES TO BE SAFETY GLAZED.
4) SMOKE DETECTORS ON EACH FLOOR LEVEL.
5) ALL INTERIOR PARTITIONS 3 1/2" UNLESS NOTED OTHERWISE.

DESIGN BY:	WSP
DATE:	10/01/2005
REV. #7:	08/12/02
ACR # 1001:	08/22/02

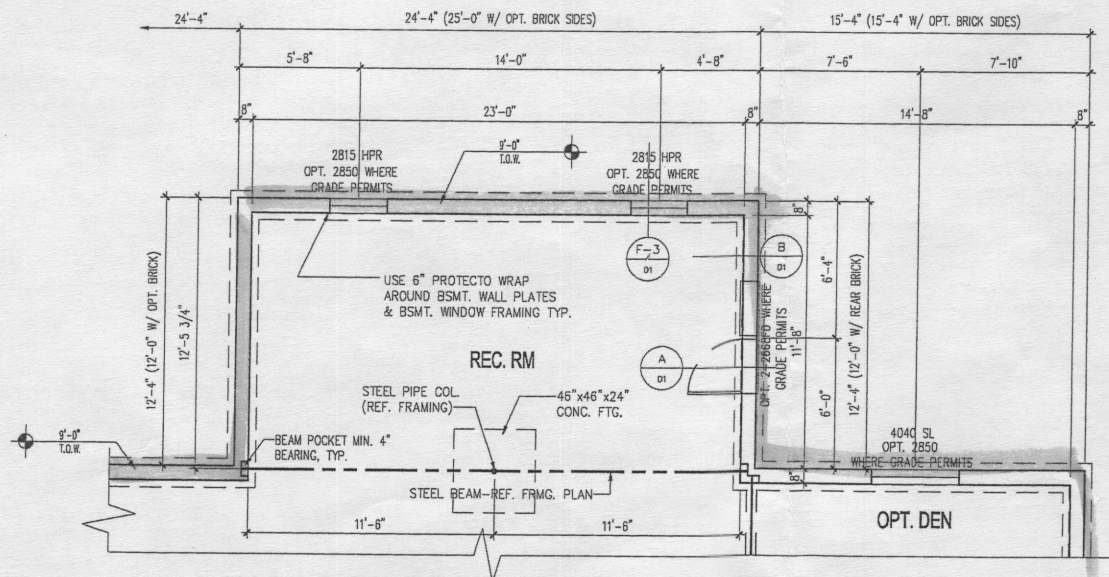
Optional Morning Room

NOTE:
WINDOWS WHERE THE OPERABLE OPENING IS LOCATED MORE THAN 72" ABOVE THE GRADE OR SURFACE BELOW SHALL HAVE THE LOWEST PART OF THE CLEAR OPENING A MINIMUM OF 24" (OR PER LOCAL CODE) ABOVE THE FINISHED FLOOR UNLESS EQUIPPED WITH AN APPROVED OPENING LIMITING OR FALL PREVENTION DEVICE.

NOTE:
1) EXHAUST FANS THAT VENT TO THE EXTERIOR WILL BE INSTALLED IN ALL BATHS WITHOUT WINDOWS.
2) PROVIDE @ LEAST 1 HANDRAIL FOR STAIRS HAVING 4 OR MORE RISERS.
3) GLASS DOORS, SIDE-LITES, & SHOWER ENCLOSURES TO BE SAFETY GLAZED.
4) SMOKE DETECTORS ON EACH FLOOR LEVEL.
5) ALL INTERIOR PARTITIONS 3 1/2" UNLESS NOTED OTHERWISE.



PART. FIRST FLOOR PLAN W/OPT. MORNING RM
SCALE: 1/4" = 1'-0"



PART. FOUNDATION/BASEMENT PLAN W/OPT. MORNING RM
SCALE: 1/4" = 1'-0"

PINNACLE DESIGN & CONSULTING INC.
ARCHITECTURE • PLANNING • CONSULTING • PROJECT ANALYSIS • RECORDS
11150 Folsom Blvd. • Suite 100 • Oakland, CA 94627
Ph: 703.218.3400 • Fax: 703.218.3407 • Web Site: www.pdc-home.com

SHEET TITLE
PART. FLOOR PLANS W/OPT. MORNING RM
CLIENT INFORMATION
CRAFTMARK HOMES / OAKMONT

REV. #	DATE
01	08/01/2012
02	09/20/2012
03	10/30/2013

2.10