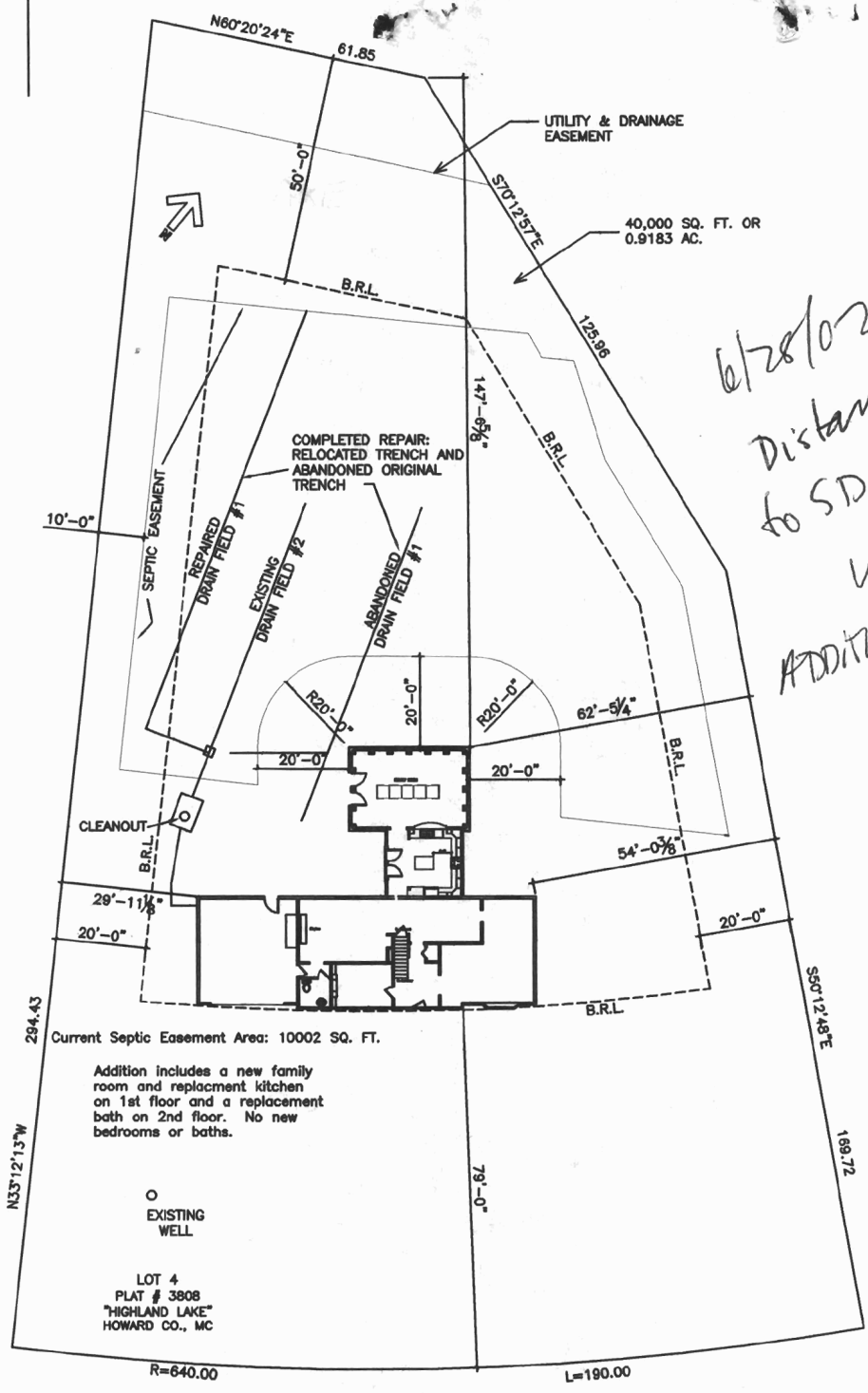




| REVISIONS |     |             |      |          |
|-----------|-----|-------------|------|----------|
| ZONE      | REV | DESCRIPTION | DATE | APPROVED |



6/28/02  
 Distance  
 to SDA &  
 well  
 Addition OK  
 KN

NOTE:  
 HOUSE LOCATION PROVIDED BY  
 JOHN C. MALLEMA SR., INC.  
 LAND SURVEYORS

JOHN AND AMY CHAMPION (H) 301 854 2333  
 6635 ISLE OF SKYE DR. (W) 240 228 7919  
 HIGHLAND, MD 20777

SITE PLAN W/ PROPOSED ADDITION  
 SCALE 1"=40'

ADDITION AND UTILITY LOCATIONS BY:  
 TALAAT ARCHITECTS AND J. CHAMPION  
 TALAAT ARCHITECTS  
 301 421 1694

|       |          |         |     |
|-------|----------|---------|-----|
| SIZE  | FSCM NO. | DWG NO. | REV |
| SCALE | SHEET    |         |     |