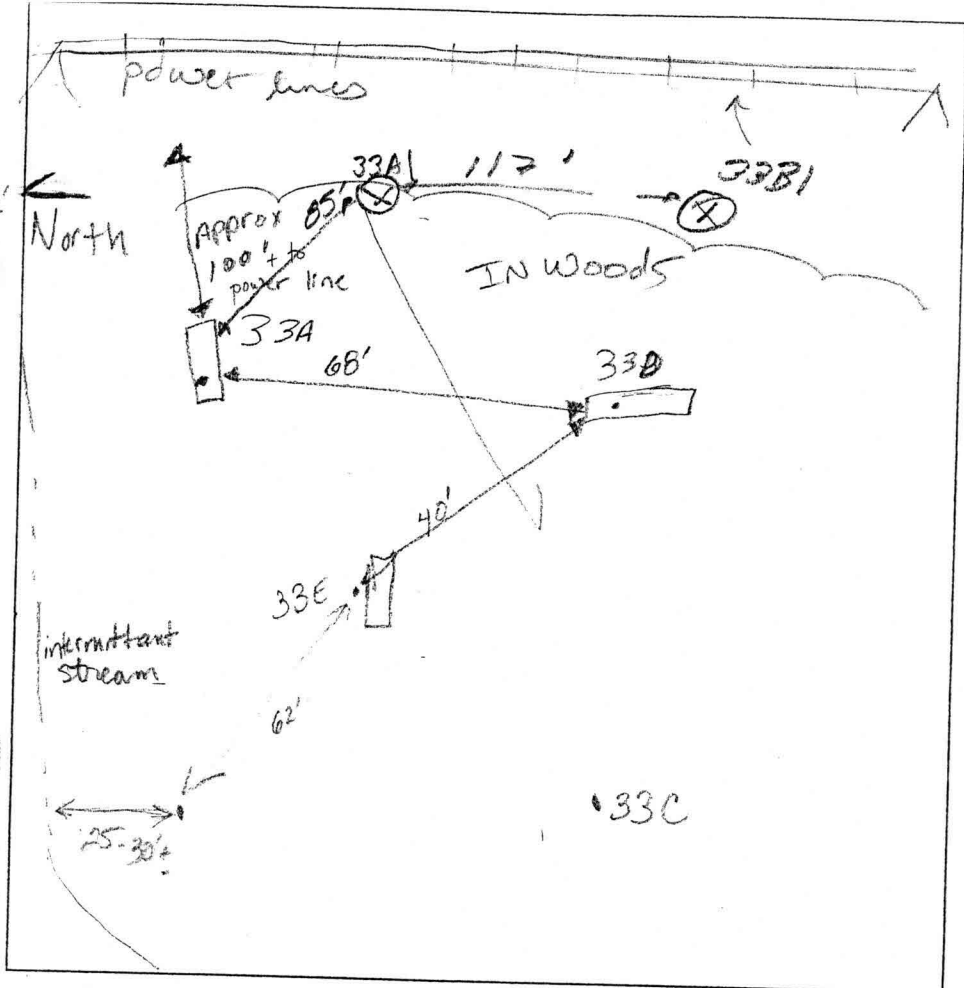


AVP
 33A
 Storn
 SL
 2' 2 1/2'
 wk platy structure
 used soil
 5'
 black
 brn
 white
 SAND-LS
 small platy
 frags
 H. Bottom 10'



33B1
 Brown
 Loam 1'
 Brown
 Silty
 (MUD) 3'
 Yellow
 Brown
 Red
 Silty
 5-15 90
 Heavy
 Mud 10'

33D
 SL loam
 wk platy structure
 3-5'
 brn
 white
 fine
 sand
 very
 micaceous
 ↑ efficacy
 of filtration
 Refusal 9'

33E
 Brown
 Loam 1'
 Platy
 w/ fine
 Silty
 Red
 Brown
 Silty
 Yellow
 Brown
 Silty
 10 1/2'

DATE	TEST #	DEPTH	START	BREAK 1" DROP	STOP 2" DROP	TIME OF 2nd INCH	P/F/H
11/13/03	33A	3 1/2' S 10' NB	1:00	1:07	1:11	3	(P)
	33D	4 1/2' 9' NB	Visual	SEE 33E	Est 5min		(P)
	33E	5 1/2' 10 1/2'	1:05	1:10	1:16	6min	P
	33D	7 1/2'	Refusal				
	33B	5' 10'	3:02	3:11	3:22	11min	FA
	33A1	SAME AS 33B					
	33C	NOT DUG PER BS.					

33D
 Lt brn
 Sand
 Red
 frags
 Refusal 7 1/2'

REMARKS Holes dug per plan
 SANITARIAN KC / FA BACKHOE Wille OTHERS Rob Sheekey, Mark Johnson, Erik Johnson
 TEST HOLES USED IN SDA _____ AVG. PERC TIME _____ SQ. FT/BR _____
 TRENCH WIDTH _____ INLET DEPTH _____ MAX. BOT DEPTH _____ EFFECTIVE SW _____

Signed per cat 10-1-07

MATCHLINE

