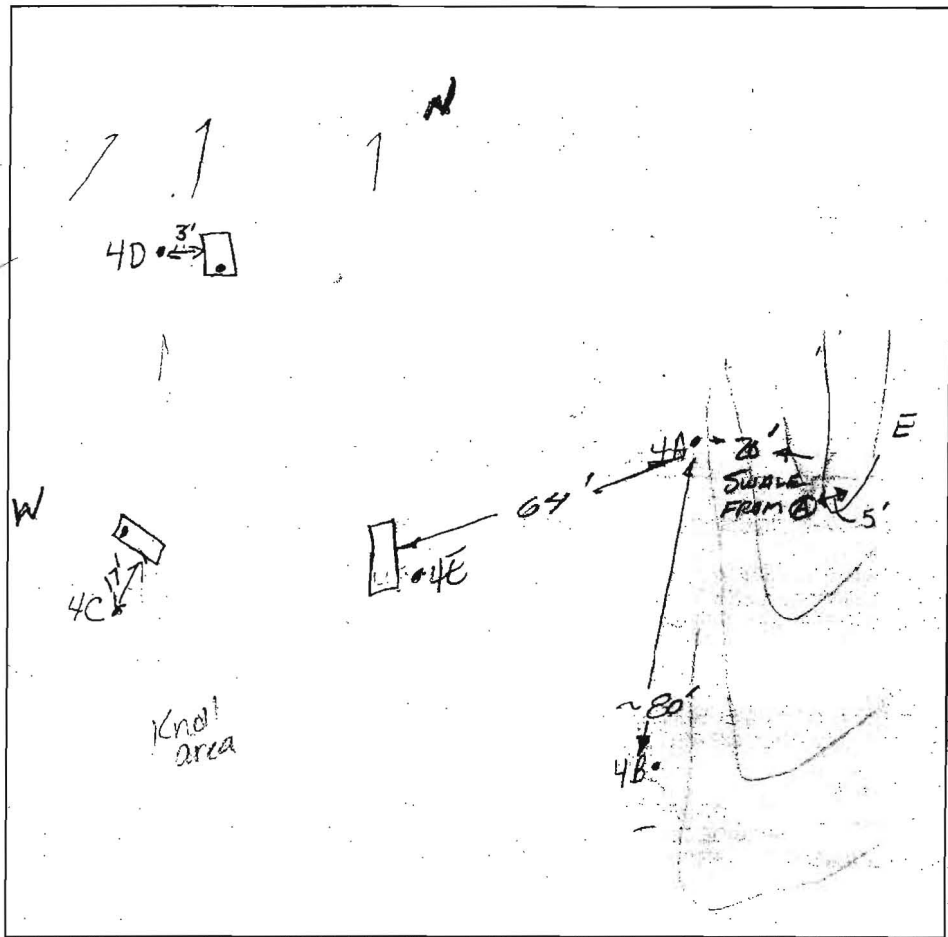


AP
4D
Roots SLn
10"
Sand
org
brn
Trace
Rock
5'
mucac
Sand
brn
Rock Frag 20%
Stony
hard
sap. → -9'
frag -10'
brn
mucac
mid gr
sandy
packed
H. Bottom
Rock, grad 1/2



4C
Roots to 8"
org brn
mucac
L Sand
mid-grained
Saprolite
fracs begin
at 4'
mg gr
Sand
mucac
~15% to 20% Fracs
H. Bottom 8'

4A
strong Red
mucac
L Sand

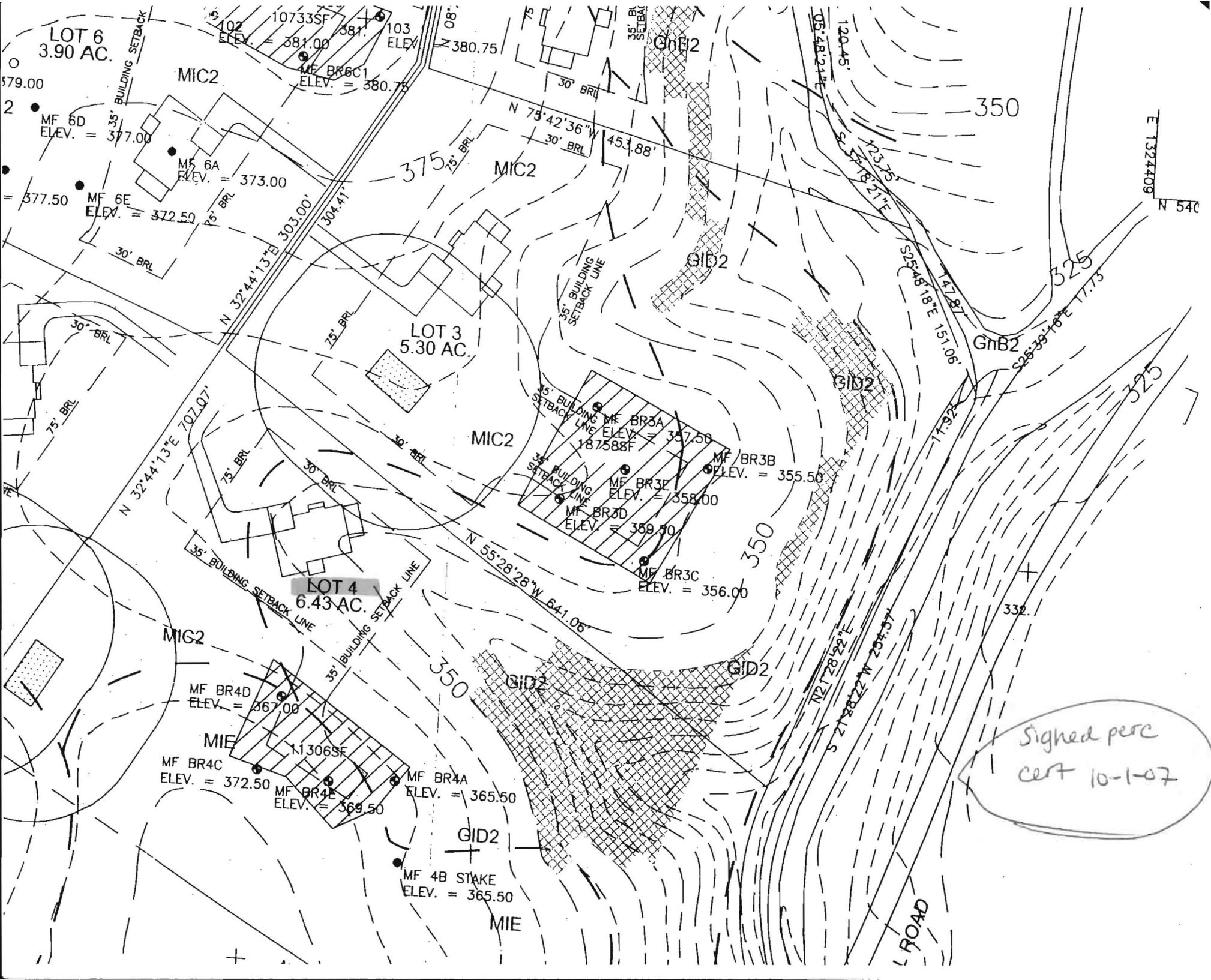
Red
mucac
Sand
5m. sap
frags ~ 5-10%

* 9' stopped
digging backhoe
blew hose

DATE	TEST #	DEPTH	START	BREAK 1" DROP	STOP 2" DROP	TIME OF 2nd INCH	P/F/H
10/28	4D	4' M 11 1/2 HB	9:45	9:47	9:50	3 min	P
		12 x 12 hole					
	4C	4' 10" M 8 1/2 HB	9:30	9:30 ⁴⁵	9:32 ¹⁵	1 1/2	P
		Poured @ 8' sits awhile soil packed w/ mica content	9:29	9:29	9:35	26 min	P
	4E	4' 8 1/2	10:04	10:07	10:14	7 min	P
	4A	4' 1/2' Blew hose	10:31	10:33	10:35	2 min post hole size	P

4E
Brown
Lign
4'
Red
Brown
Mucous
Solom
3'
Pb + 4
muc
schist on
East side
of hole
Brown
Solom
Loamy
Sand
Bured 1/2 dollars
@ 1/2 - 5/8 in rate
Hrd Muc
schist bottom

REMARKS 4A - Maintain 20' more from swale
SANITARIAN K. Noonan BACKHOE Willie OTHERS
TEST HOLES USED IN SDA _____ AVG. PERC TIME _____ SQ. FT/BR _____
TRENCH WIDTH 3 INLET DEPTH 2 MAX BOT DEPTH 4 EFFECTIVE SW _____



LOT 6
3.90 AC.

MF 6D
ELEV. = 377.00

MIC2

MF 6A
ELEV. = 373.00

MF 6E
ELEV. = 372.50

LOT 3
5.30 AC.

MIC2

MF BR3A
ELEV. = 357.50
187588F

MF BR3E
ELEV. = 358.00

MF BR3D
ELEV. = 359.50

MF BR3B
ELEV. = 355.50

MF BR3C
ELEV. = 356.00

LOT 4
6.43 AC.

MIG2

MF BR4D
ELEV. = 367.00

MIE
MF BR4C
ELEV. = 372.50

MF BR4E
ELEV. = 369.50

MF BR4A
ELEV. = 365.50

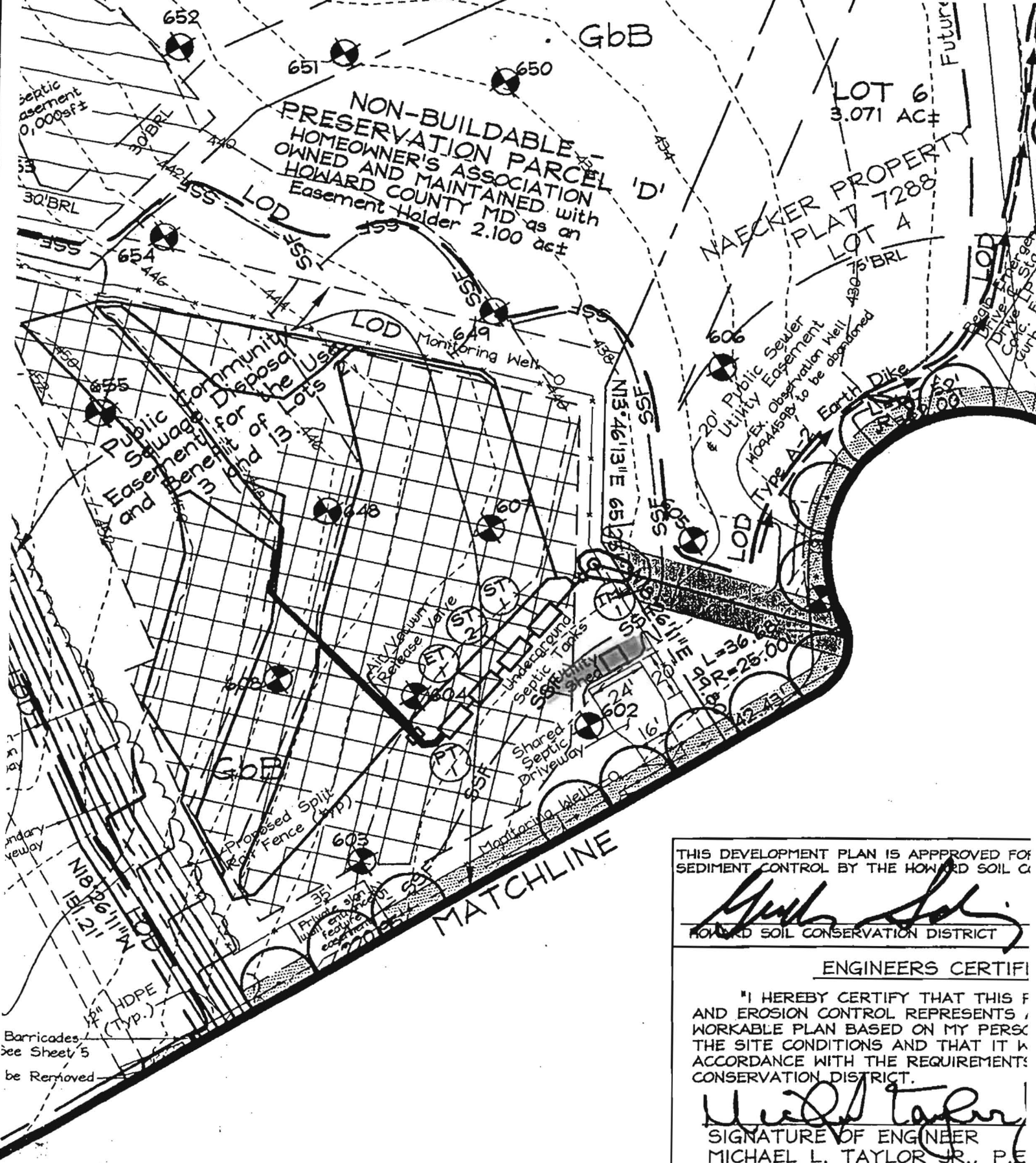
GID2

MF 4B STAKE
ELEV. = 365.50

MIE

Signed perc
cert 10-1-07

L ROAD



THIS DEVELOPMENT PLAN IS APPROVED FOR SEDIMENT CONTROL BY THE HOWARD SOIL C

Yuh Song
 HOWARD SOIL CONSERVATION DISTRICT

ENGINEERS CERTIFI

"I HEREBY CERTIFY THAT THIS F AND EROSION CONTROL REPRESENTS, WORKABLE PLAN BASED ON MY PERSC THE SITE CONDITIONS AND THAT IT W ACCORDANCE WITH THE REQUIREMENTS CONSERVATION DISTRICT.

Michael L. Taylor Jr.
 SIGNATURE OF ENGINEER
 MICHAEL L. TAYLOR JR., P.E