

COUNTY #

SOIL PROFILE

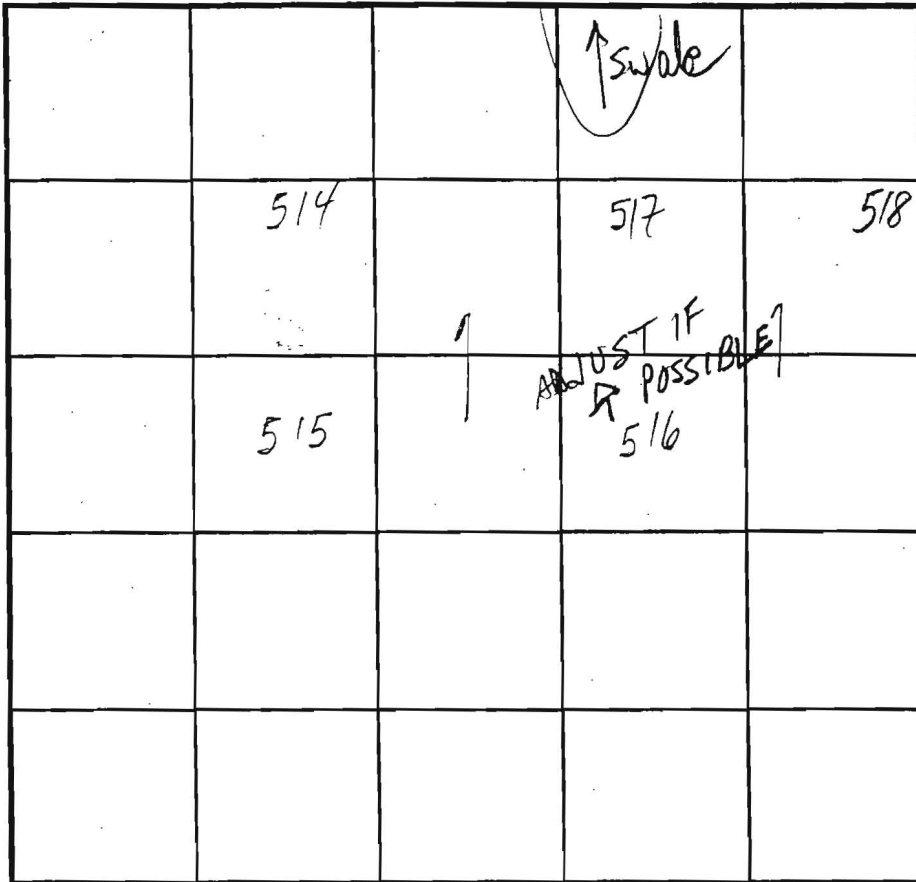
0' 516
 tan
 + brn
 sac 1 m
 10-15% frags
 5 1/2
 tan beige
 sand
 15-20% frags
 7 1/2
 30-35%
 struc.
 frags
 12
 15-20%
 frags

517/515/518

orge tan
 sac 1 m
 15% frags
 34
 tan beige
 sand
 10-15%
 frags
 13

514

orge tan
 sac 1 m
 10% frags
 4
 tan
 beige
 orge
 sand
 20-
 30%
 frags
 7
 15%
 frags
 12



SOIL PROFILE

0'

INDICATE NORTH - NAME ADJOINING ROADWAY AS BASE LINE.

DATE	TEST NO.	DEPTH	PRE-WET		TEST - 1" DROP		TIME	
			START	STOP	START	STOP		
10/16/01	516 S	4 9/16"	10:46	11:08	3/4"	SLOW	2	
	517	4 3/16"	12:17:55	12:18:55	12:18:55	12:20:55	2	
	514	5' B	11:22	11:23	11:33	11:35	2	
	515	5 3/16" B	11:27	11:28	11:28	11:30	2	
	518	5 1/2" 14	11:47	11:48	11:48	11:52	4	
	516 M	7 1/2"	12:02:40	12:05	12:05	12:09	4	
	516	13	MARGINAL - AVOID BY 25'					

REMARKS

Lots of 100 ALL HOLES PER PLAN

TYPE OF SOIL

TESTED BY

MARK RIFKIN

ALSO PRESENT

Chuck Cross
Mike Sacrew

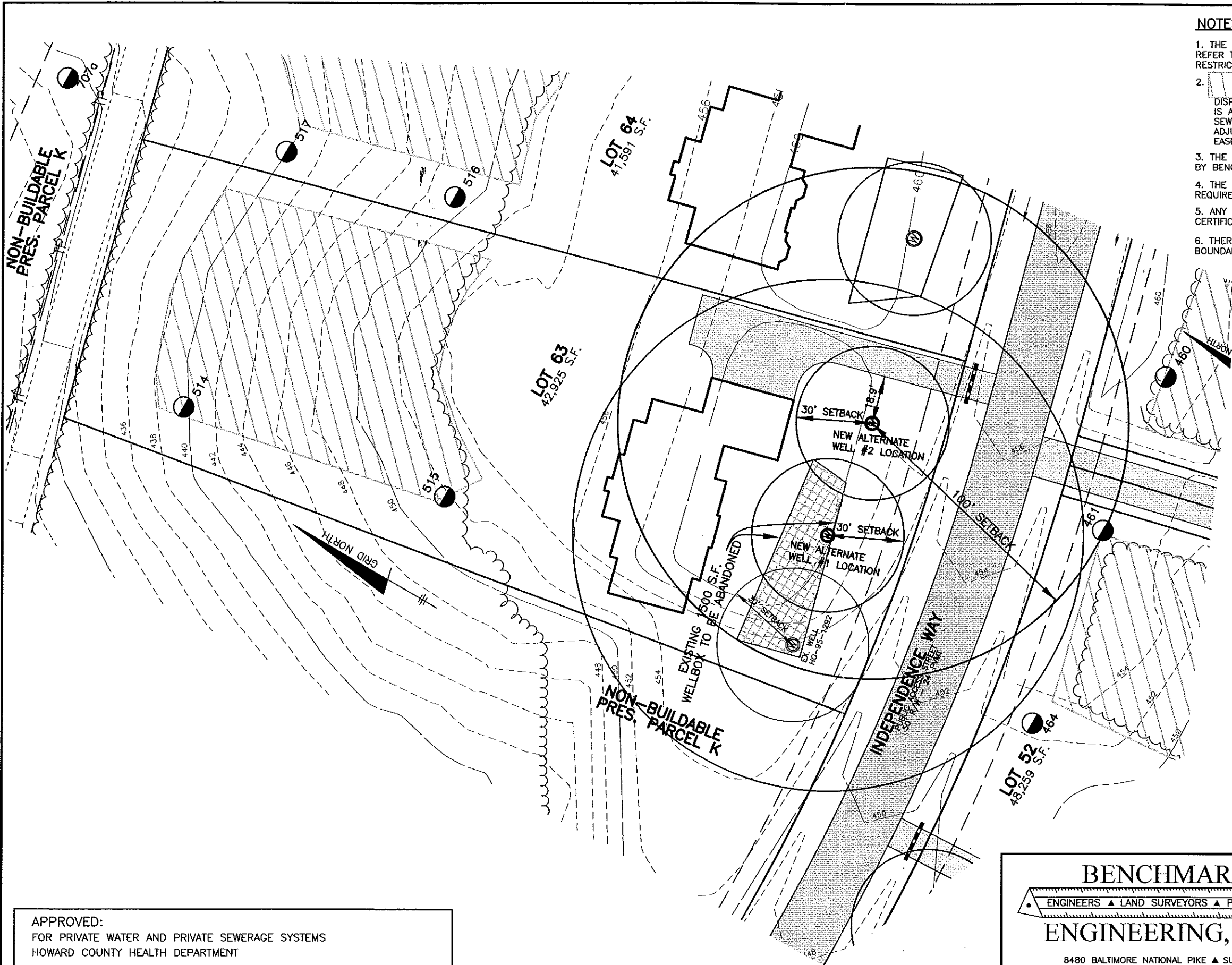
TRENCH DESIGN DATA: AVERAGE PERCOLATION TIME

TRENCH WIDTH

INLET DEPTH

MAXIMUM BOTTOM DEPTH

SO. FT./BEDROOM



NOTES:

1. THE LOT SHOWN HEREON WAS RECORDED ON MAY 2, 2006 AS PLAT NUMBER 18245. REFER TO THIS PLAT FOR LOT DIMENSIONS, LOT AREAS, ALL EASEMENTS AND BUILDING RESTRICTIONS.
2. THIS AREA DESIGNATES A PRIVATE SEWERAGE EASEMENT OF 10,000 SQUARE FEET AS REQUIRED BY THE STATE DEPARTMENT OF THE ENVIRONMENT FOR INDIVIDUAL SEWERAGE DISPOSAL. IMPROVEMENTS OF ANY NATURE IN THIS AREA IS RESTRICTED UNTIL PUBLIC SEWER IS AVAILABLE. THIS EASEMENT SHALL BECOME NULL AND VOID UPON CONNECTION TO A PUBLIC SEWERAGE SYSTEM. THE COUNTY HEALTH OFFICER SHALL HAVE THE AUTHORITY TO GRANT ADJUSTMENTS TO THE PRIVATE SEWERAGE EASEMENT. RECORDATION OF A MODIFIED SEWERAGE EASEMENT PLAT SHALL NOT BE NECESSARY.
3. THE EXISTING WELL (TAG NO. HO-95-1292) SHOWN ON THIS PLAN HAS BEEN FIELD LOCATED BY BENCHMARK ENGINEERING, INC. ON _____ AND IS ACCURATELY SHOWN.
4. THE LOT SHOWN HEREON COMPLIES WITH THE MINIMUM OWNERSHIP WIDTH AND LOT AREA AS REQUIRED BY THE MARYLAND DEPARTMENT OF THE ENVIRONMENT.
5. ANY CHANGES TO THE PRIVATE SEWERAGE EASEMENT SHALL REQUIRE A REVISED PERCOLATION CERTIFICATION PLAN.
6. THERE ARE NO EXISTING WELLS OR SEPTIC SYSTEMS WITHIN 100' OF THE PROPERTY'S BOUNDARIES EXCEPT THAT WHICH IS SHOWN.

LEGEND

- EXISTING CONTOURS ESTABLISHED UNDER F-05-031
- FIELD SURVEYED WELL LOCATION
- PASSED PERC HOLE PER SP-02-013
- FAILED PERC HOLE PER SP-02-013

I CERTIFY THAT THE INFORMATION SHOWN HEREON IS BASED ON FIELD WORK PERFORMED BY ME OR UNDER MY DIRECT SUPERVISION, AND IS CORRECT, TO THE BEST OF MY KNOWLEDGE AND BELIEF.

David Thompson
 DAVID THOMPSON
 PLAN PREPARER

APPROVED:
 FOR PRIVATE WATER AND PRIVATE SEWERAGE SYSTEMS
 HOWARD COUNTY HEALTH DEPARTMENT

Richard J. Davis 6/6/2008
 COUNTY HEALTH OFFICER DATE

BENCHMARK
 ENGINEERS ▲ LAND SURVEYORS ▲ PLANNERS
ENGINEERING, INC.

8480 BALTIMORE NATIONAL PIKE ▲ SUITE 418
 ELLICOTT CITY, MARYLAND 21043
 PHONE: 410-465-6105 FAX: 410-465-6644
 www.bei-civilengineering.com

BUILDER: TOLL MD III LIMITED PARTNERSHIP
 7164 COLUMBIA GATEWAY DRIVE
 SUITE 230
 COLUMBIA, MARYLAND 21046
 410-872-9105

HOMEWOOD CROSSING
LOT 63

INDEPENDENCE WAY
 TAX MAP 29, GRID 9 - PARCEL 28
 3rd ELECTION DISTRICT
 HOWARD COUNTY, MARYLAND

REVISED
PERCOLATION CERTIFICATION PLAN

DATE:	MAY 22, 2008	PROJECT NO.	1913
SCALE:	1" = 40'	DRAWING	1 OF 1



PROP. S.W.M. FACILITY NO. 107
TEMP. SEDIMENT BASIN
FOR WQV & CPV
PRIVATELY OWNED & MAINTAINED BY H.O.A.
BOTTOM ELEV. = 402.00
WET POOL ELEV. = 404.50
TOP ELEV. = 408.80

*Approved
P-plan
1/3/03*

ROAD 'E'
PUBLIC ACCESS STREET

PRIVATE S.W.M., DRAINAGE
& UTILITY EASEMENT

PROP. S.W.M. FACILITY NO. 61
TEMP. SEDIMENT BASIN
FOR WQV & CPV
PRIVATELY OWNED & MAINTAINED BY H.O.A.

LOT 53
49,326 sq. ft.

LOT 52
48,259 sq. ft.

LOT 51
49,091 sq. ft.

LOT 49
47,250 sq. ft.

LOT 50
52,342 sq. ft.

LOT 64
41,980 sq. ft.

LOT 65
40,439 sq. ft.

LOT 63
45,263 sq. ft.

LOT 62
33,189 sq. ft.

PILOT CHANNEL
D8

FOREBAY
426

20' S.W.M. ACCESS EASEMENT

24' USE-IN-COMMON
ACCESS EASEMENT
FOR LOTS 53 & 54

25' WETLAND
BUFFER

NO WOODY
VEGETATION
ZONE

Front

Front

Front

Front

Front

Front

Front

Front

Front

Front

Front

Front

Front

Front

Front

Front

Front

Front

Front

Front

Front

Front

Front

Front

Front

Front

Front

Front

Front

Front

Front

Front

Front

Front

Front

Front

Front

Front

Front

Front

Front

Front

Front

Front

Front

Front

Front

Front

Front

Front

Front

Front

Front

Front

Front

Front

Front

Front

Front

Front

Front

Front

Front

Front

Front

Front

Front

Front

Front

Front

Front

Front

Front

Front

Front

Front

Front

Front

Front

Front

Front

Front

Front

Front

Front

Front

Front

Front

Front

Front

Front

Front

Front

Front

Front

Front

Front

Front

Front

Front

Front

Front

Front

Front

Front

Front

Front

Front

Front